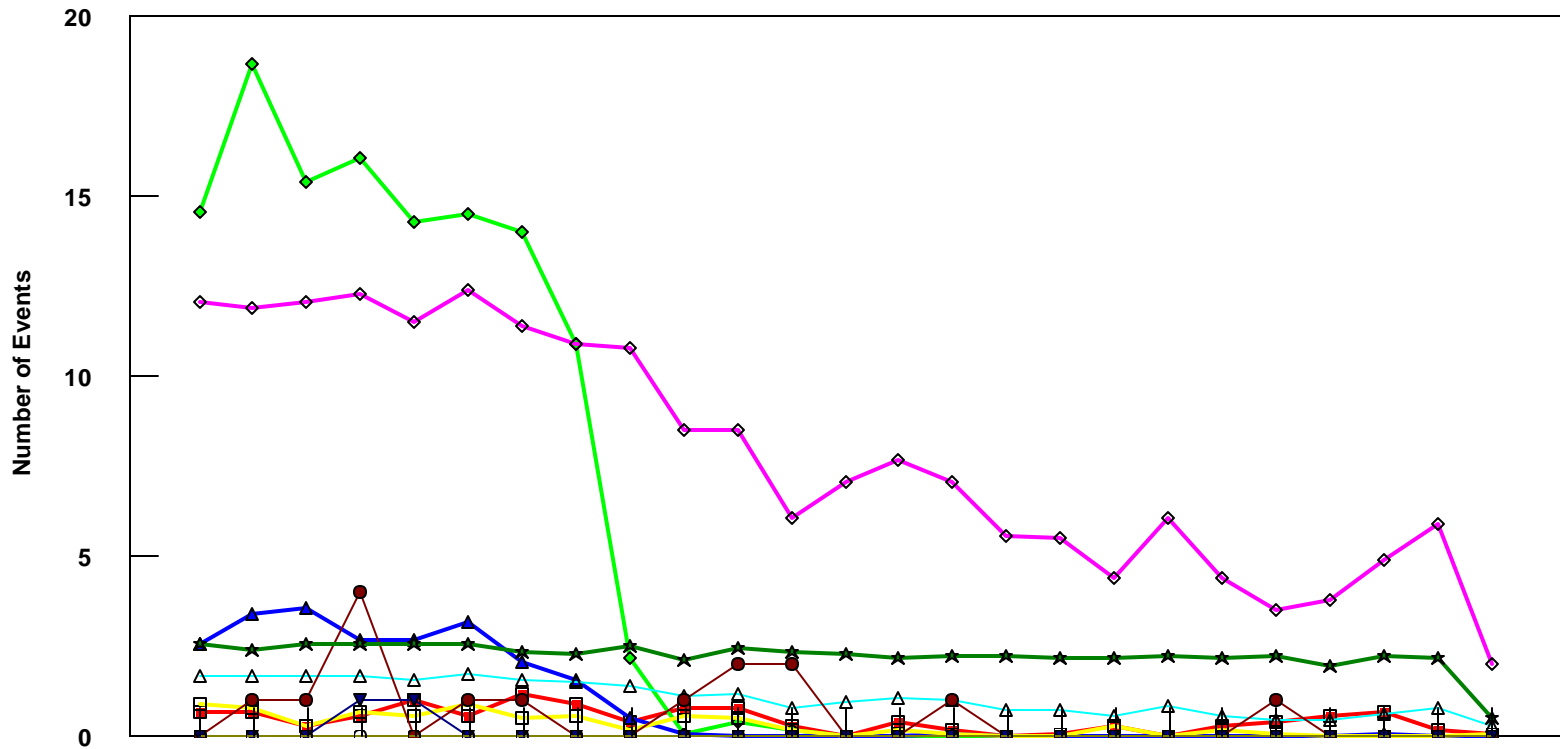


# DCA

## B737-800 Event Count per Month



	4/05	5/05	6/05	7/05	8/05	9/05	10/05	11/05	12/05	1/06	2/06	3/06	4/06	5/06	6/06	7/06	8/06	9/06	10/06	11/06	12/06	1/07	2/07	3/07	4/07
■ Pirep Items (X10)	0.7	0.7	0.3	0.6	1	0.6	1.2	0.9	0.4	0.8	0.8	0.3	0	0.4	0.2	0	0.1	0.3	0	0.3	0.4	0.6	0.7	0.2	0.1
◆ Maintenance Items (X10)	14.6	18.7	15.4	16.1	14.3	14.5	14	10.9	2.2	0.1	0.4	0.2	0	0	0	0	0	0	0	0	0	0	0	0	0
▲ Scheduled Items (X10)	2.6	3.4	3.6	2.7	2.7	3.2	2.1	1.6	0.5	0.1	0	0	0	0	0.1	0	0	0	0	0	0	0	0.1	0	0
□ MEL Items (X10)	0.9	0.8	0.3	0.7	0.6	0.9	0.5	0.6	0.2	0.6	0.5	0.2	0	0.2	0.1	0	0	0.3	0	0.2	0.1	0	0	0	0.1
◇ Deps out of Sta (X10)	12.1	11.9	12.1	12.3	11.5	12.4	11.4	10.9	10.8	8.5	8.5	6.1	7.1	7.7	7.1	5.6	5.5	4.4	6.1	4.4	3.5	3.8	4.9	5.9	2
△ Flt Hrs into Sta (x100)	1.69	1.69	1.71	1.7	1.58	1.77	1.57	1.51	1.44	1.13	1.17	0.83	0.99	1.06	1.01	0.76	0.77	0.61	0.85	0.56	0.45	0.49	0.65	0.79	0.29
● Delays	0	1	1	4	0	1	1	0	0	1	2	2	0	0	1	0	0	0	1	0	1	0	0	0	0
★ Tot Hrs Grnd Time (x100)	2.57	2.43	2.57	2.58	2.58	2.57	2.33	2.30	2.52	2.14	2.47	2.36	2.30	2.20	2.24	2.25	2.19	2.21	2.23	2.22	2.27	1.95	2.27	2.18	0.51
▼ Cancellations	0	0	0	1	1	0	0	0	0	0	0	0	0	0	0	0	0	0	0	0	0	0	0	0	0
⊖ Total Delay Cost (x10,000)	0	0	0	0	0	0	0	0	0	0	0	0	0	0	0	0	0	0	0	0	0	0	0	0	0

\*Note: Total hours ground time reflect only those legs having greater than 2 hours and less than 10 hours available prior to departure. Delay Costs derived from SPEC 109. Cnx cost ceiling is calculated as equal to 6 hours delay.