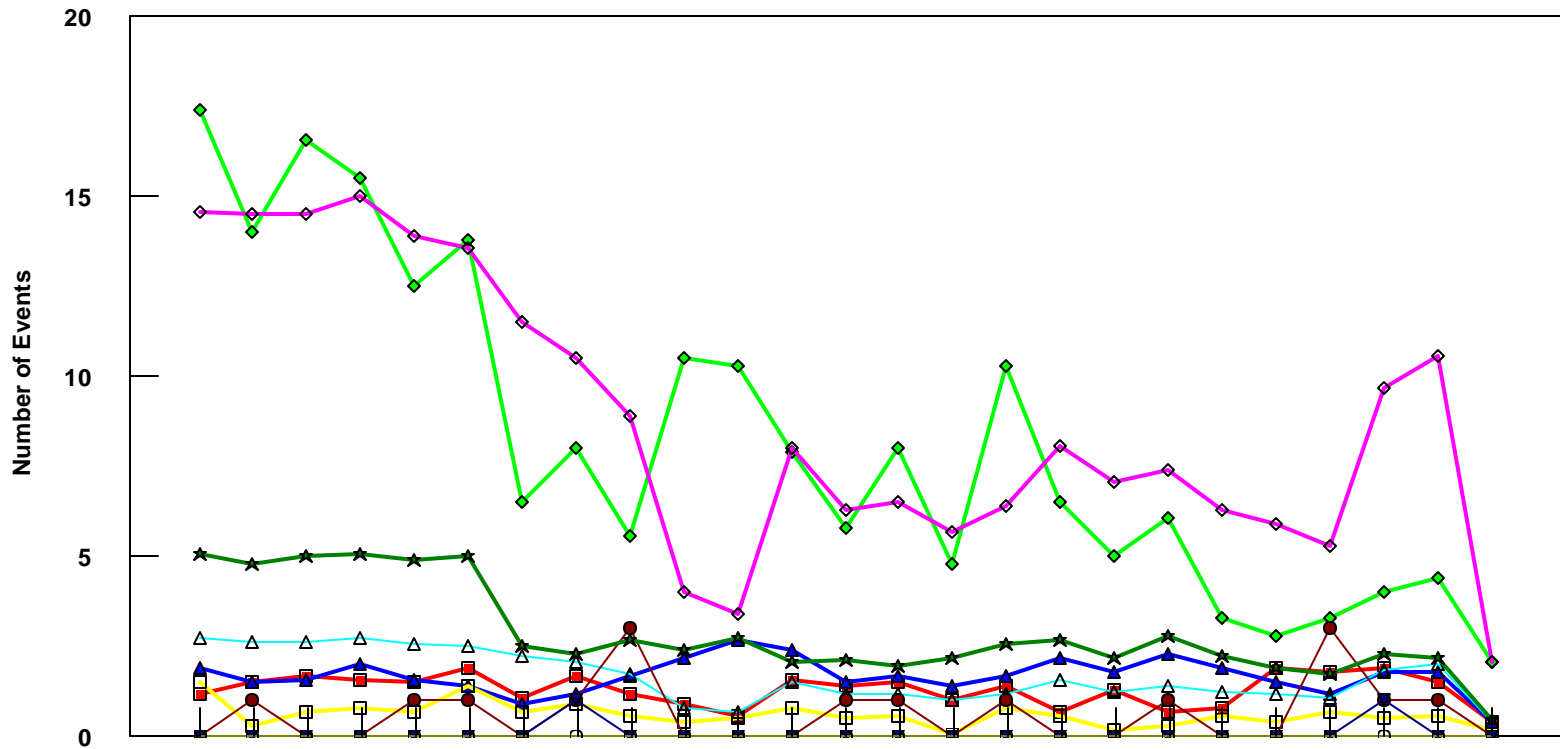


## DFW

### B737-800 Event Count per Month



	4/05	5/05	6/05	7/05	8/05	9/05	10/05	11/05	12/05	1/06	2/06	3/06	4/06	5/06	6/06	7/06	8/06	9/06	10/06	11/06	12/06	1/07	2/07	3/07	4/07
■ Pirep Items (X10)	1.2	1.5	1.7	1.6	1.5	1.9	1.1	1.7	1.2	0.9	0.6	1.6	1.4	1.5	1	1.4	0.7	1.3	0.7	0.8	1.9	1.8	1.9	1.5	0.4
◆ Maintenance Items (X10)	17.4	14	16.6	15.5	12.5	13.8	6.5	8	5.6	10.5	10.3	7.9	5.8	8	4.8	10.3	6.5	5	6.1	3.3	2.8	3.3	4	4.4	2.1
▲ Scheduled Items (X10)	1.9	1.5	1.6	2	1.6	1.4	0.9	1.2	1.7	2.2	2.7	2.4	1.5	1.7	1.4	1.7	2.2	1.8	2.3	1.9	1.5	1.2	1.8	1.8	0.4
□ MEL Items (X10)	1.5	0.3	0.7	0.8	0.7	1.4	0.7	0.9	0.6	0.4	0.5	0.8	0.5	0.6	0.1	0.8	0.6	0.2	0.3	0.6	0.4	0.7	0.5	0.6	0.2
◇ Deps out of Sta (X10)	14.6	14.5	14.5	15	13.9	13.6	11.5	10.5	8.9	4	3.4	8	6.3	6.5	5.7	6.4	8.1	7.1	7.4	6.3	5.9	5.3	9.7	10.6	2.1
△ Flt Hrs into Sta (x100)	2.74	2.65	2.65	2.77	2.57	2.51	2.24	2.08	1.76	0.8	0.69	1.54	1.18	1.18	1.01	1.17	1.58	1.27	1.42	1.27	1.22	1.09	1.85	2.01	0.42
● Delays	0	1	0	0	1	1	0	1	3	0	0	0	1	1	0	1	0	0	1	0	0	3	1	1	0
★ Tot Hrs Grnd Time (x100)	5.067	4.782	5.016	5.079	4.881	5.002	2.552	2.302	2.681	2.431	2.731	2.052	2.162	1.952	2.202	2.592	2.671	2.212	2.812	2.222	1.922	1.742	2.322	2.172	0.442
▼ Cancellations	0	0	0	0	0	0	0	1	0	0	0	0	0	0	0	0	0	0	0	0	0	0	1	0	0
⊖ Total Delay Cost (x10,000)	0	0	0	0	0	0	0	0	0	0	0	0	0	0	0	0	0	0	0	0	0	0	0	0	0

\*Note: Total hours ground time reflect only those legs having greater than 2 hours and less than 10 hours available prior to departure. Delay Costs derived from SPEC 109. Cnx cost ceiling is calculated as equal to 6 hours delay.