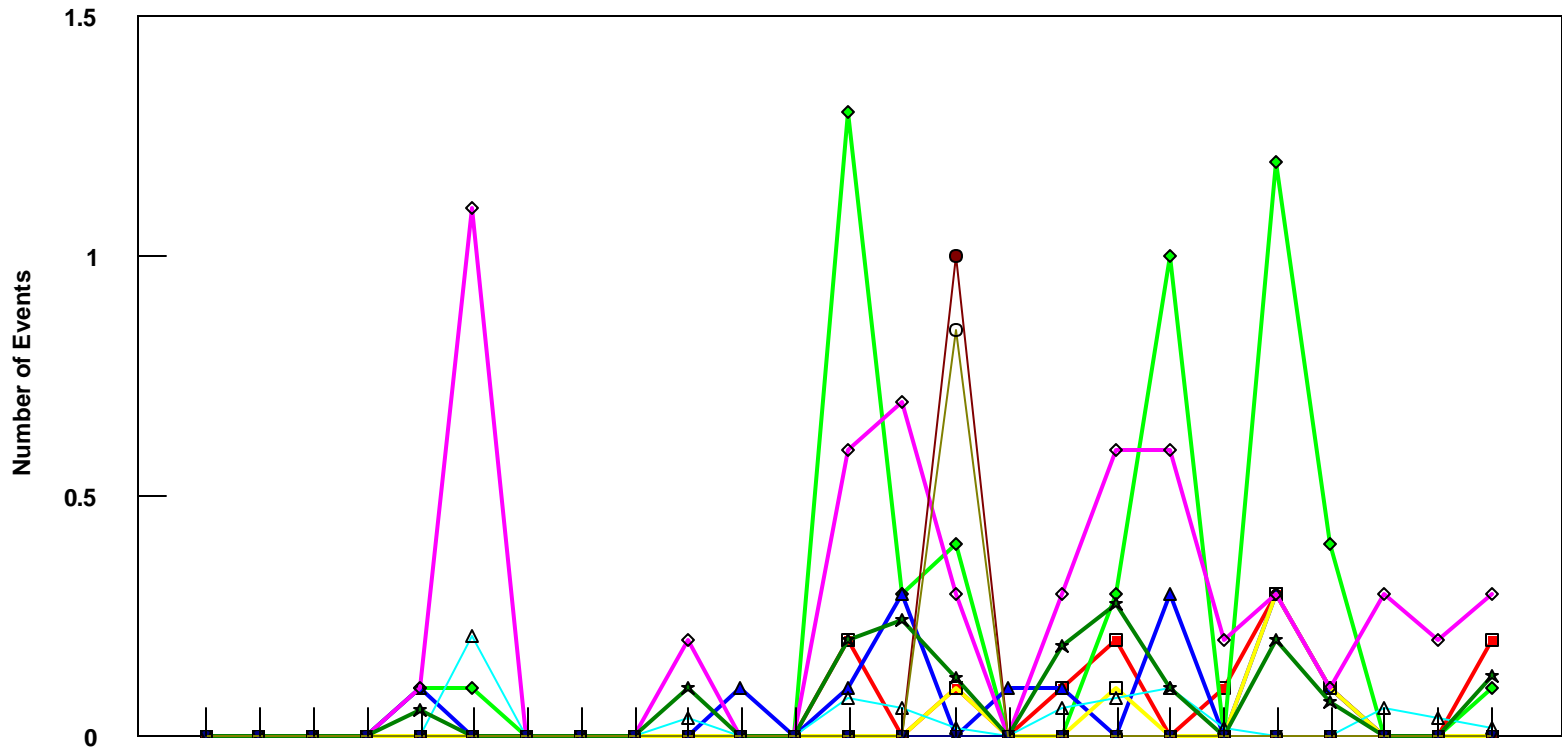


DFW B757-200 Event Count per Month



	4/05	5/05	6/05	7/05	8/05	9/05	10/05	11/05	12/05	1/06	2/06	3/06	4/06	5/06	6/06	7/06	8/06	9/06	10/06	11/06	12/06	1/07	2/07	3/07	4/07
■ Pirep Items (X10)	0	0	0	0	0	0	0	0	0	0	0	0	0.2	0	0.1	0	0.1	0.2	0	0.1	0.3	0.1	0	0	0.2
◆ Maintenance Items (X10)	0	0	0	0	0.1	0.1	0	0	0	0	0	0	1.3	0.3	0.4	0	0	0.3	1	0	1.2	0.4	0	0	0.1
▲ Scheduled Items (X10)	0	0	0	0	0.1	0	0	0	0	0	0.1	0	0.1	0.3	0	0.1	0.1	0	0.3	0	0.3	0.1	0	0	0
□ MEL Items (X10)	0	0	0	0	0	0	0	0	0	0	0	0	0	0	0.1	0	0	0.1	0	0	0.3	0.1	0	0	0
◇ Deps out of Sta (X10)	0	0	0	0	0.1	1.1	0	0	0	0.2	0	0	0.6	0.7	0.3	0	0.3	0.6	0.6	0.2	0.3	0.1	0.3	0.2	0.3
△ Flt Hrs into Sta (x100)	0	0	0	0	0	0.21	0	0	0	0.04	0	0	0.08	0.06	0.02	0	0.06	0.08	0.1	0.02	0	0	0.06	0.04	0.02
● Delays	0	0	0	0	0	0	0	0	0	0	0	0	0	0	1	0	0	0	0	0	0	0	0	0	0
★ Tot Hrs Grnd Time (x100)	0	0	0	0	0.057	0	0	0	0	0.1	0	0	0.2	0.24	0.12	0	0.187	0.277	0.1	0	0.2	0.07	0	0	0.12
▼ Cancellations	0	0	0	0	0	0	0	0	0	0	0	0	0	0	0	0	0	0	0	0	0	0	0	0	0
⊖ Total Delay Cost (x10,000)	0	0	0	0	0	0	0	0	0	0	0	0	0	0	0.847	0	0	0	0	0	0	0	0	0	0

***Note: Total hours ground time reflect only those legs having greater than 2 hours and less than 10 hours available prior to departure. Delay Costs derived from SPEC 109. Cnx cost ceiling is calculated as equal to 6 hours delay.**