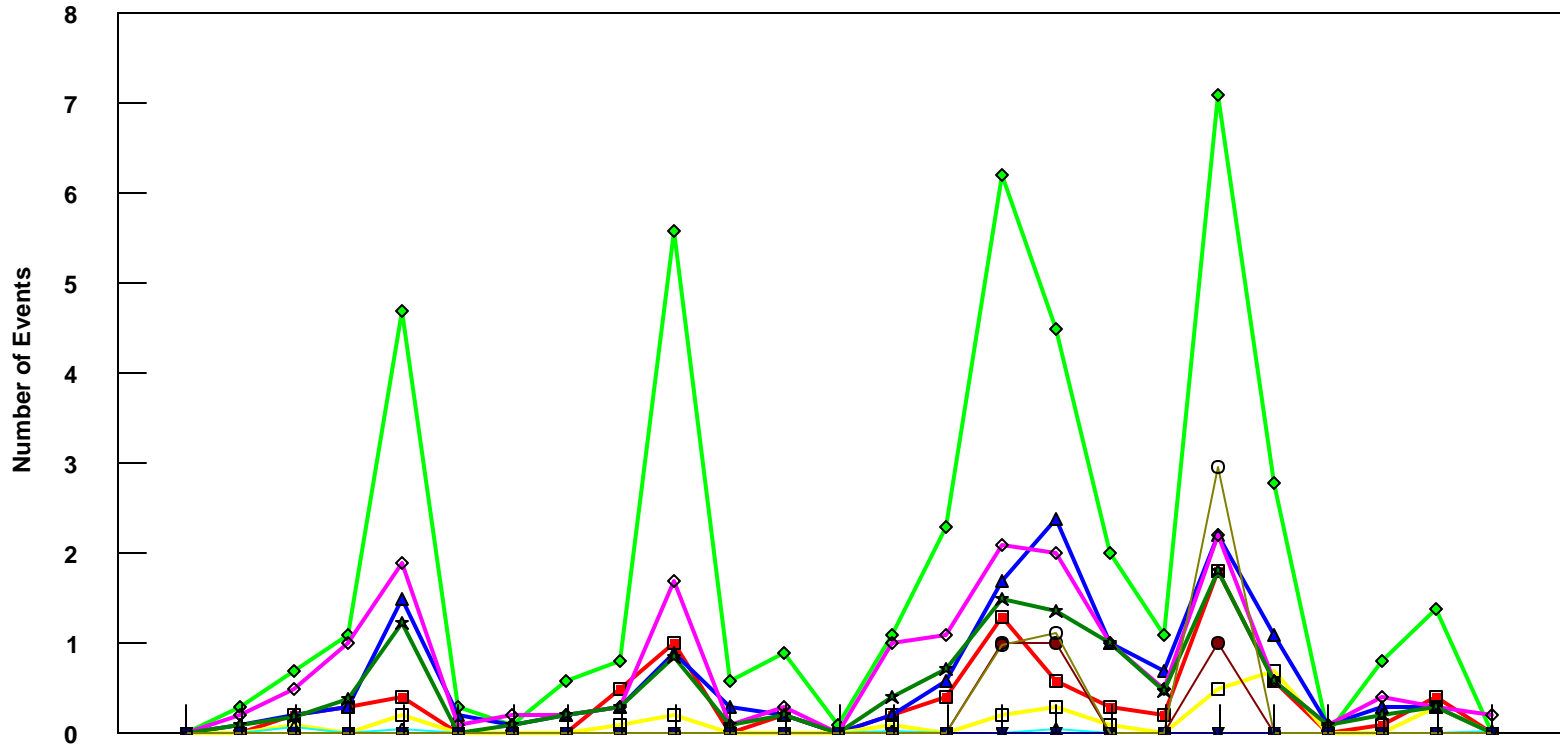


## DFW B757-300 Event Count per Month



	4/05	5/05	6/05	7/05	8/05	9/05	10/05	11/05	12/05	1/06	2/06	3/06	4/06	5/06	6/06	7/06	8/06	9/06	10/06	11/06	12/06	1/07	2/07	3/07	4/07
■ Pirep Items (X10)	0	0	0.2	0.3	0.4	0	0	0	0.5	1	0	0.2	0	0.2	0.4	1.3	0.6	0.3	0.2	1.8	0.6	0	0.1	0.4	0
◆ Maintenance Items (X10)	0	0.3	0.7	1.1	4.7	0.3	0.1	0.6	0.8	5.6	0.6	0.9	0.1	1.1	2.3	6.2	4.5	2	1.1	7.1	2.8	0	0.8	1.4	0
▲ Scheduled Items (X10)	0	0.1	0.2	0.3	1.5	0.2	0.1	0.2	0.3	0.9	0.3	0.2	0	0.2	0.6	1.7	2.4	1	0.7	2.2	1.1	0.1	0.3	0.3	0
□ MEL Items (X10)	0	0	0.1	0	0.2	0	0	0	0.1	0.2	0	0	0	0.1	0	0.2	0.3	0.1	0	0.5	0.7	0	0	0.3	0
◇ Deps out of Sta (X10)	0	0.2	0.5	1	1.9	0.1	0.2	0.2	0.3	1.7	0.1	0.3	0	1	1.1	2.1	2	1	0.5	2.2	0.6	0.1	0.4	0.3	0.2
▲ Flt Hrs into Sta (x100)	0	0.02	0.08	0.02	0.05	0.02	0.02	0	0	0	0	0	0	0.03	0	0.02	0.05	0	0	0	0	0	0	0	0.04
● Delays	0	0	0	0	0	0	0	0	0	0	0	0	0	0	0	1	1	0	0	1	0	0	0	0	0
★ Tot Hrs Grnd Time (x100)	0	0.1	0.18	0.37	1.22	0	0.1	0.2	0.3	0.86	0.1	0.2	0	0.4	0.72	1.49	1.37	1	0.48	1.80	0.6	0.1	0.2	0.3	0
▼ Cancellations	0	0	0	0	0	0	0	0	0	0	0	0	0	0	0	0	0	0	0	0	0	0	0	0	0
⊖ Total Delay Cost (x10,000)	0	0	0	0	0	0	0	0	0	0	0	0	0	0	0	0.98	1.13	0	0	2.96	0	0	0	0	0

**\*Note: Total hours ground time reflect only those legs having greater than 2 hours and less than 10 hours available prior to departure. Delay Costs derived from SPEC 109. Cnx cost ceiling is calculated as equal to 6 hours delay.**