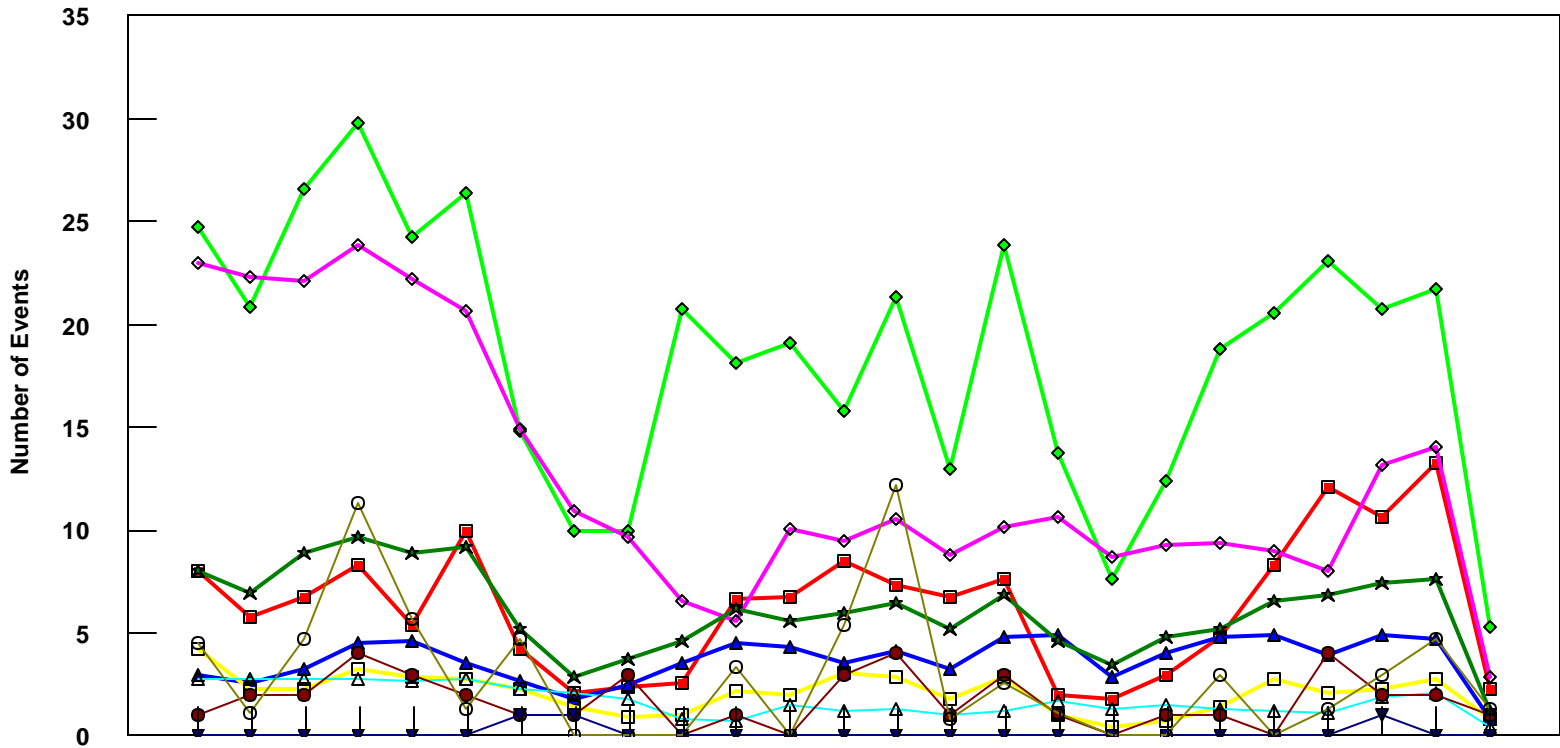


DFW

All Fleet Total - Event Count per Month



	4/05	5/05	6/05	7/05	8/05	9/05	10/05	11/05	12/05	1/06	2/06	3/06	4/06	5/06	6/06	7/06	8/06	9/06	10/06	11/06	12/06	1/07	2/07	3/07	4/07
■ Pirep Items (X10)	8	5.8	6.8	8.3	5.4	10	4.2	2.1	2.4	2.6	6.7	6.8	8.5	7.3	6.8	7.6	2	1.8	3	4.8	8.3	12.1	10.6	13.3	2.3
◆ Maintenance Items (X10)	24.7	20.8	26.6	29.8	24.3	26.4	14.8	10	10	20.8	18.1	19.1	15.8	21.3	13	23.8	13.8	7.6	12.4	18.8	20.6	23.1	20.8	21.7	5.3
▲ Scheduled Items (X10)	3	2.6	3.3	4.5	4.6	3.5	2.7	1.8	2.5	3.5	4.5	4.3	3.5	4.1	3.3	4.8	4.9	2.9	4	4.8	4.9	3.9	4.9	4.7	0.8
□ MEL Items (X10)	4.2	2.3	2.3	3.3	2.9	2.8	2.3	1.4	0.9	1	2.2	2	3.1	2.9	1.8	2.9	1	0.4	0.7	1.4	2.8	2.1	2.3	2.8	0.8
◇ Deps out of Sta (X10)	23	22.3	22.1	23.8	22.2	20.7	14.9	10.8	9.7	6.6	5.6	10.1	9.5	10.5	8.8	10.2	10.6	8.7	9.3	9.4	9	8	13.2	14	2.9
△ Flt Hrs into Sta (x100)	2.81	2.74	2.78	2.81	2.64	2.74	2.26	2.08	1.76	0.84	0.7	1.54	1.26	1.27	1.03	1.2	1.69	1.35	1.52	1.29	1.26	1.09	1.91	2.07	0.48
● Delays	1	2	2	4	3	2	1	1	3	0	1	0	3	4	1	3	1	0	1	1	0	4	2	2	1
★ Tot Hrs Grnd Time (x100)	7.98	6.98	8.85	9.66	8.93	9.13	5.24	2.90	3.78	4.59	6.16	5.58	5.93	6.46	5.21	6.89	4.63	3.48	4.81	5.23	6.55	6.82	7.40	7.58	1.17
▼ Cancellations	0	0	0	0	0	0	1	1	0	0	0	0	0	0	0	0	0	0	0	0	0	0	1	0	0
⊖ Total Delay Cost (x10,000)	4.52	1.13	4.75	11.3	5.65	1.35	4.75	0	0	0	3.39	0	5.43	12.2	0.84	2.57	1.13	0	0	2.96	0	1.35	2.94	4.75	1.35

*Note: Total hours ground time reflect only those legs having greater than 2 hours and less than 10 hours available prior to departure. Delay Costs derived from SPEC 109. Cnx cost ceiling is calculated as equal to 6 hours delay.