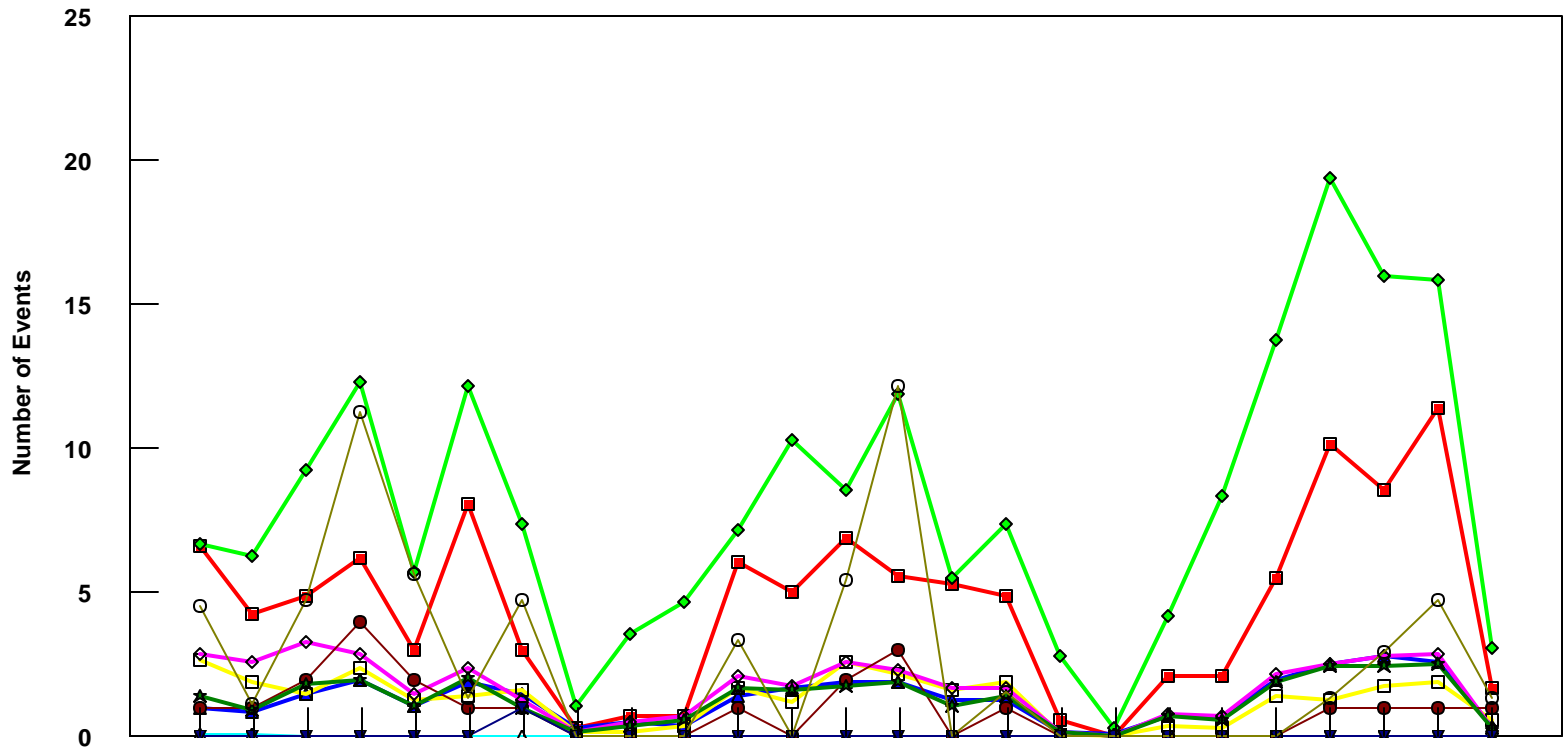


# DFW

## L1011-500 Event Count per Month



	4/05	5/05	6/05	7/05	8/05	9/05	10/05	11/05	12/05	1/06	2/06	3/06	4/06	5/06	6/06	7/06	8/06	9/06	10/06	11/06	12/06	1/07	2/07	3/07	4/07
■ Pirep Items (X10)	6.6	4.3	4.9	6.2	3	8.1	3	0.3	0.7	0.7	6.1	5	6.9	5.6	5.3	4.9	0.6	0	2.1	2.1	5.5	10.2	8.6	11.4	1.7
◆ Maintenance Items (X10)	6.7	6.3	9.3	12.3	5.7	12.2	7.4	1.1	3.6	4.7	7.2	10.3	8.6	11.9	5.5	7.4	2.8	0.3	4.2	8.4	13.8	19.4	16	15.9	3.1
▲ Scheduled Items (X10)	1	0.9	1.5	2	1.1	1.9	1.5	0.3	0.5	0.4	1.4	1.7	1.9	1.9	1.3	1.3	0.2	0.1	0.7	0.7	2	2.5	2.8	2.6	0.4
□ MEL Items (X10)	2.7	1.9	1.5	2.4	1.3	1.4	1.6	0.2	0.2	0.4	1.7	1.2	2.6	2.2	1.6	1.9	0.1	0	0.4	0.3	1.4	1.3	1.8	1.9	0.6
◇ Deps out of Sta (X10)	2.9	2.6	3.3	2.9	1.5	2.4	1.3	0.2	0.5	0.7	2.1	1.8	2.6	2.3	1.7	1.7	0.2	0	0.8	0.7	2.2	2.5	2.8	2.9	0.3
△ Flt Hrs into Sta (x100)	0.07	0.07	0.05	0.02	0.02	0	0	0	0	0	0.01	0	0	0	0	0.01	0	0	0	0	0.04	0	0	0.02	0
● Delays	1	1	2	4	2	1	1	0	0	0	1	0	2	3	0	1	0	0	0	0	0	1	1	1	1
★ Tot Hrs Grnd Time (x100)	1.42	0.95	1.82	1.94	1.05	2.06	1.03	0.2	0.39	0.59	1.66	1.66	1.78	1.93	1.07	1.39	0.2	0	0.70	0.6	1.91	2.45	2.44	2.55	0.3
▼ Cancellations	0	0	0	0	0	0	1	0	0	0	0	0	0	0	0	0	0	0	0	0	0	0	0	0	0
⊖ Total Delay Cost (x10,000)	4.52	1.13	4.75	11.3	5.65	1.35	4.75	0	0	0	3.39	0	5.43	12.2	0	1.58	0	0	0	0	0	1.35	2.94	4.75	1.35

\*Note: Total hours ground time reflect only those legs having greater than 2 hours and less than 10 hours available prior to departure. Delay Costs derived from SPEC 109. Cnx cost ceiling is calculated as equal to 6 hours delay.