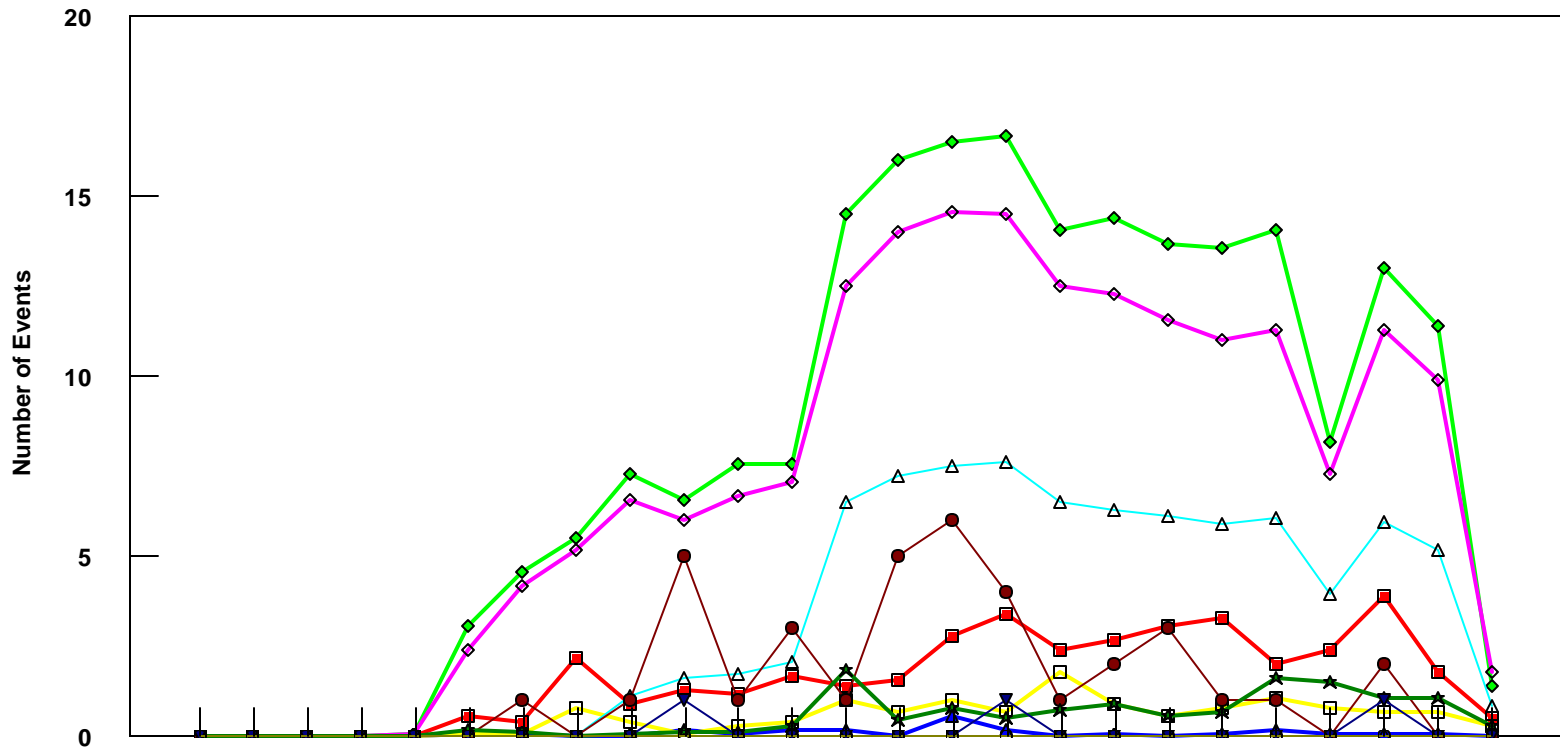


HNL

B737-800 Event Count per Month



	4/05	5/05	6/05	7/05	8/05	9/05	10/05	11/05	12/05	1/06	2/06	3/06	4/06	5/06	6/06	7/06	8/06	9/06	10/06	11/06	12/06	1/07	2/07	3/07	4/07
■ Pirep Items (X10)	0	0	0	0	0	0.6	0.4	2.2	0.9	1.3	1.2	1.7	1.4	1.6	2.8	3.4	2.4	2.7	3.1	3.3	2	2.4	3.9	1.8	0.5
◆ Maintenance Items (X10)	0	0	0	0	0.1	3.1	4.6	5.5	7.3	6.6	7.6	7.6	14.5	16	16.5	16.7	14.1	14.4	13.7	13.6	14.1	8.2	13	11.4	1.4
▲ Scheduled Items (X10)	0	0	0	0	0	0.1	0.1	0	0	0.2	0.1	0.2	0.2	0	0.6	0.2	0	0.1	0	0.1	0.2	0.1	0.1	0.1	0
□ MEL Items (X10)	0	0	0	0	0	0.1	0.1	0.8	0.4	0.1	0.3	0.4	1	0.7	1	0.7	1.8	0.9	0.6	0.8	1.1	0.8	0.7	0.7	0.3
◇ Deps out of Sta (X10)	0	0	0	0	0.1	2.4	4.2	5.2	6.6	6	6.7	7.1	12.5	14	14.6	14.5	12.5	12.3	11.6	11	11.3	7.3	11.3	9.9	1.8
△ Flt Hrs into Sta (x100)	0	0	0	0	0	0	0	1.14	1.62	1.76	2.09	6.51	7.25	7.52	7.65	6.53	6.33	6.14	5.94	6.09	3.95	5.98	5.22	0.87	
● Delays	0	0	0	0	0	0	1	0	1	5	1	3	1	5	6	4	1	2	3	1	1	0	2	0	0
★ Tot Hrs Grnd Time (x100)	0	0	0	0	0	0.19	0.13	0.02	0.06	0.14	0.14	0.28	1.86	0.45	0.79	0.51	0.74	0.90	0.60	0.71	1.65	1.55	1.08	1.06	0.28
▼ Cancellations	0	0	0	0	0	0	0	0	0	1	0	0	0	0	0	1	0	0	0	0	0	0	1	0	0
⊖ Total Delay Cost (x10,000)	0	0	0	0	0	0	0	0	0	0	0	0	0	0	0	0	0	0	0	0	0	0	0	0	0

*Note: Total hours ground time reflect only those legs having greater than 2 hours and less than 10 hours available prior to departure. Delay Costs derived from SPEC 109. Cnx cost ceiling is calculated as equal to 6 hours delay.