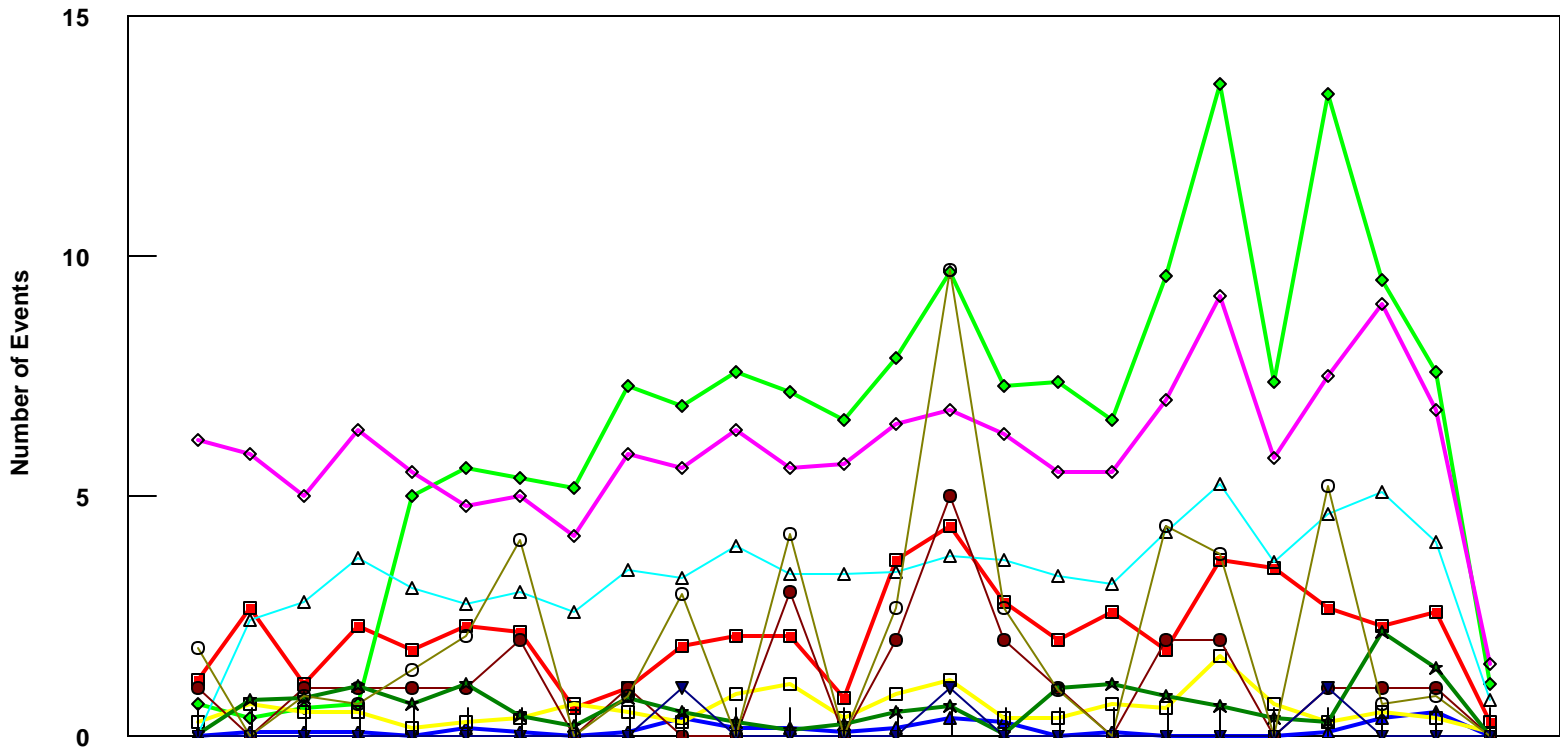


# HNL

## B757-200 Event Count per Month



	4/05	5/05	6/05	7/05	8/05	9/05	10/05	11/05	12/05	1/06	2/06	3/06	4/06	5/06	6/06	7/06	8/06	9/06	10/06	11/06	12/06	1/07	2/07	3/07	4/07
■ Pirep Items (X10)	1.2	2.7	1.1	2.3	1.8	2.3	2.2	0.6	1	1.9	2.1	2.1	0.8	3.7	4.4	2.8	2	2.6	1.8	3.7	3.5	2.7	2.3	2.6	0.3
◆ Maintenance Items (X10)	0.7	0.4	0.6	0.7	5	5.6	5.4	5.2	7.3	6.9	7.6	7.2	6.6	7.9	9.7	7.3	7.4	6.6	9.6	13.6	7.4	13.4	9.5	7.6	1.1
▲ Scheduled Items (X10)	0	0.1	0.1	0.1	0	0.2	0.1	0	0.1	0.4	0.2	0.2	0.1	0.2	0.4	0.3	0	0.1	0	0	0	0.1	0.4	0.5	0
□ MEL Items (X10)	0.3	0.7	0.5	0.5	0.2	0.3	0.4	0.7	0.5	0.3	0.9	1.1	0.4	0.9	1.2	0.4	0.4	0.7	0.6	1.7	0.7	0.3	0.5	0.4	0.1
◇ Deps out of Sta (X10)	6.2	5.9	5	6.4	5.5	4.8	5	4.2	5.9	5.6	6.4	5.6	5.7	6.5	6.8	6.3	5.5	5.5	7	9.2	5.8	7.5	9	6.8	1.5
△ Flt Hrs into Sta (x100)	0.06	2.44	2.82	3.74	3.09	2.75	3.04	2.61	3.48	3.3	3.97	3.4	3.39	3.44	3.79	3.69	3.36	3.2	4.26	5.28	3.65	4.66	5.11	4.05	0.76
● Delays	1	0	1	1	1	1	2	0	1	0	0	3	0	2	5	2	1	0	2	2	0	1	1	1	0
★ Tot Hrs Grnd Time (x100)	0.04	0.75	0.80	1.04	0.69	1.11	0.41	0.24	0.79	0.51	0.29	0.12	0.26	0.50	0.66	0.05	1.02	1.09	0.83	0.65	0.39	0.32	2.16	1.44	0.03
▼ Cancellations	0	0	0	0	0	0	0	0	0	1	0	0	0	0	1	0	0	0	0	0	0	1	0	0	0
⊖ Total Delay Cost (x10,000)	1.83	0	0.84	0.70	1.41	2.11	4.09	0	0.84	2.96	0	4.23	0	2.68	9.74	2.68	0.98	0	4.37	3.81	0	5.22	0.70	0.84	0

\*Note: Total hours ground time reflect only those legs having greater than 2 hours and less than 10 hours available prior to departure. Delay Costs derived from SPEC 109. Cnx cost ceiling is calculated as equal to 6 hours delay.