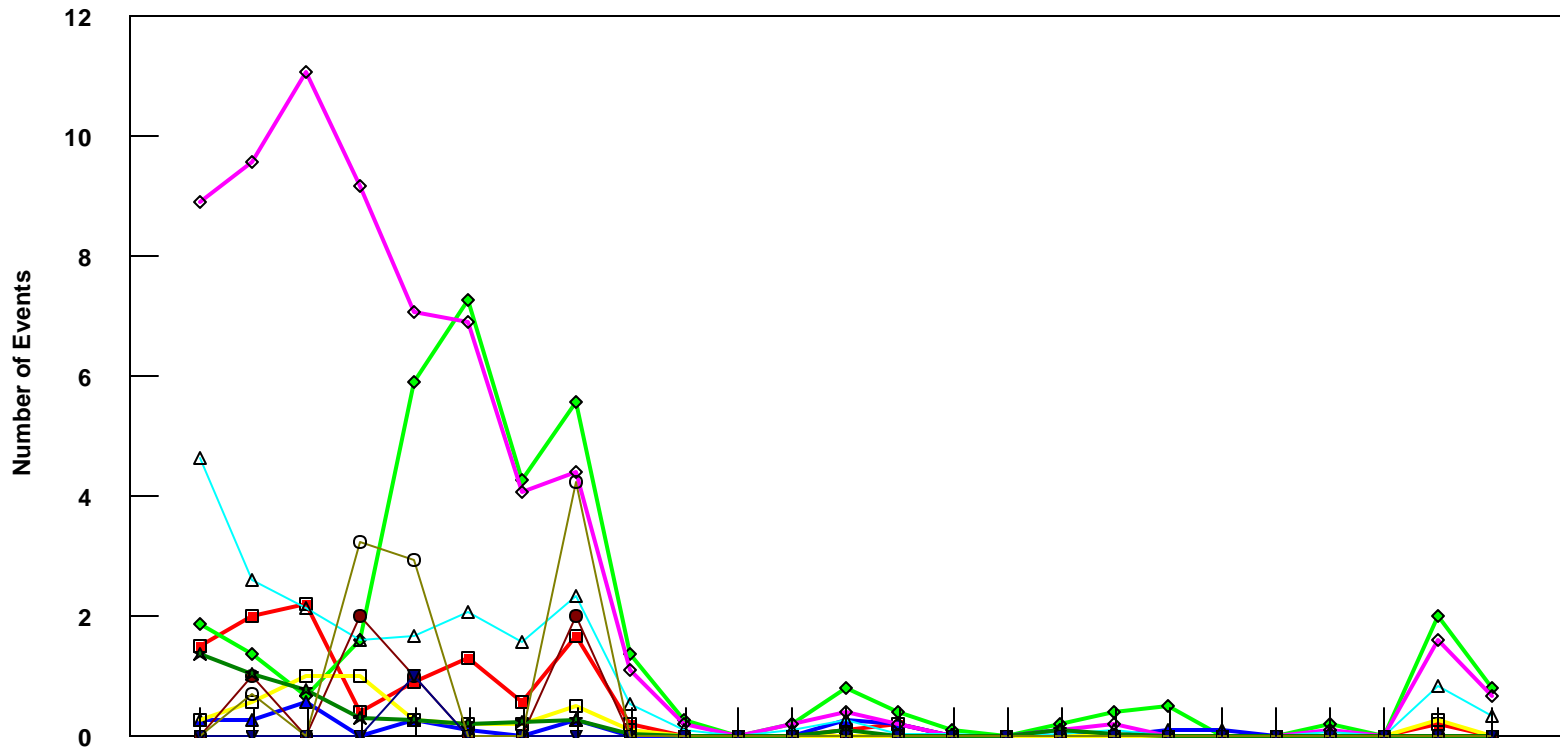


# HNL

## B757-300 Event Count per Month



	4/05	5/05	6/05	7/05	8/05	9/05	10/05	11/05	12/05	1/06	2/06	3/06	4/06	5/06	6/06	7/06	8/06	9/06	10/06	11/06	12/06	1/07	2/07	3/07	4/07
■ Pirep Items (X10)	1.5	2	2.2	0.4	0.9	1.3	0.6	1.7	0.2	0	0	0	0.1	0.2	0	0	0	0	0	0	0	0	0	0.2	0
◆ Maintenance Items (X10)	1.9	1.4	0.7	1.6	5.9	7.3	4.3	5.6	1.4	0.3	0	0.2	0.8	0.4	0.1	0	0.2	0.4	0.5	0	0	0.2	0	2	0.8
▲ Flt Hrs into Sta (x100)	0.3	0.3	0.6	0	0.3	0.1	0	0.3	0	0	0	0	0.3	0.2	0	0	0.1	0	0.1	0.1	0	0	0	0	0
□ MEL Items (X10)	0.3	0.6	1	1	0.3	0.2	0.2	0.5	0.1	0	0	0	0	0	0	0	0	0	0	0	0	0	0	0.3	0
◇ Deps out of Sta (X10)	8.9	9.6	11.1	9.2	7.1	6.9	4.1	4.4	1.1	0.2	0	0.2	0.4	0.2	0	0	0.1	0.2	0	0	0	0.1	0	1.6	0.7
▲ Flt Hrs into Sta (x100)	4.65	2.62	2.16	1.63	1.68	2.09	1.59	2.36	0.54	0.12	0	0.12	0.28	0.05	0.05	0	0.06	0.11	0	0	0	0.07	0	0.86	0.36
● Delays	0	1	0	2	1	0	0	2	0	0	0	0	0	0	0	0	0	0	0	0	0	0	0	0	0
★ Tot Hrs Grnd Time (x100)	1.38	1.06	0.78	0.32	0.29	0.21	0.23	0.27	0.04	0	0	0	0.1	0	0	0	0.1	0.03	0	0	0	0	0	0.02	0
▼ Cancellations	0	0	0	0	1	0	0	0	0	0	0	0	0	0	0	0	0	0	0	0	0	0	0	0	0
⊖ Total Delay Cost (x10,000)	0	0.70	0	3.24	2.96	0	0	4.23	0	0	0	0	0	0	0	0	0	0	0	0	0	0	0	0	0

**\*Note: Total hours ground time reflect only those legs having greater than 2 hours and less than 10 hours available prior to departure. Delay Costs derived from SPEC 109. Cnx cost ceiling is calculated as equal to 6 hours delay.**