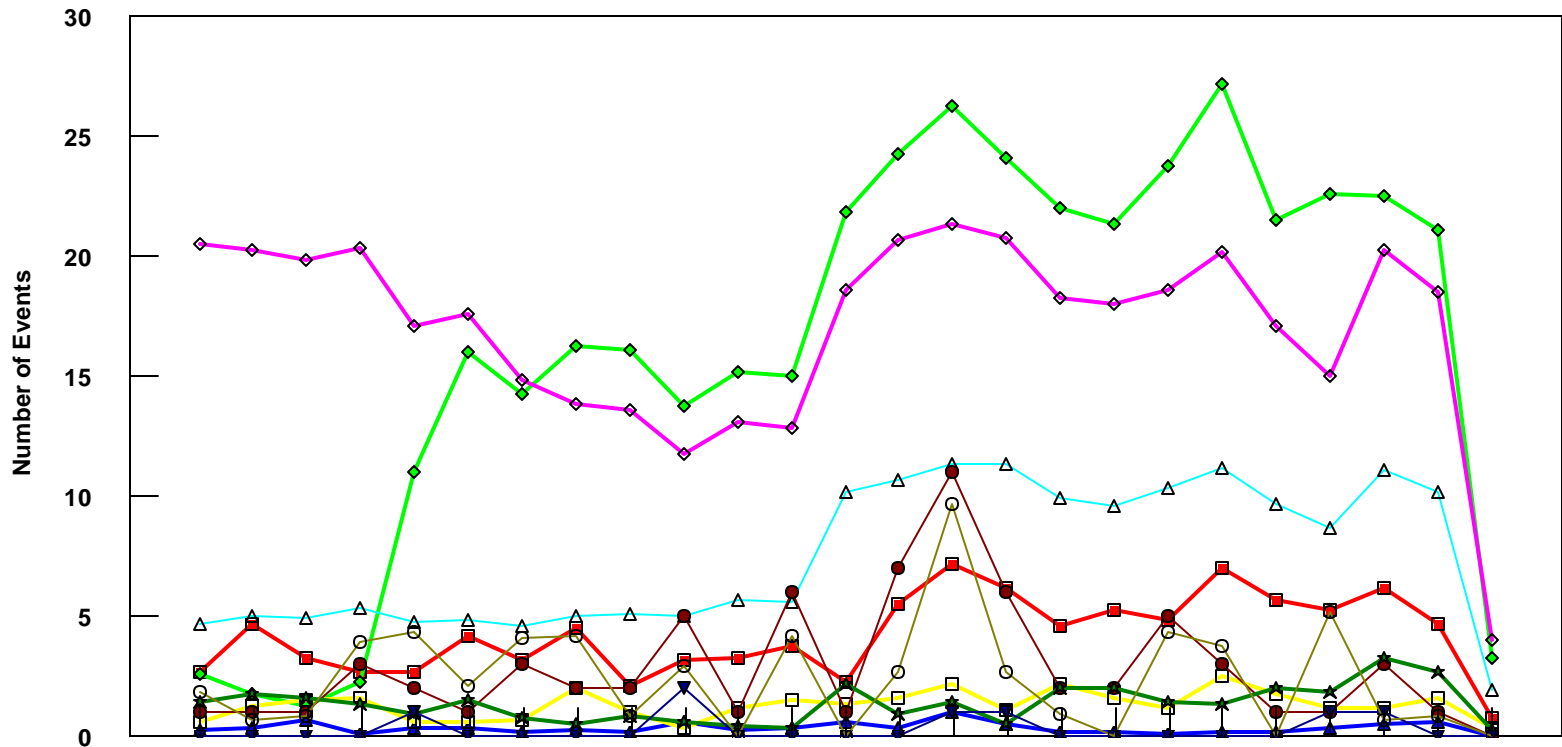


# HNL

## All Fleet Total - Event Count per Month



	4/05	5/05	6/05	7/05	8/05	9/05	10/05	11/05	12/05	1/06	2/06	3/06	4/06	5/06	6/06	7/06	8/06	9/06	10/06	11/06	12/06	1/07	2/07	3/07	4/07
■ Pirep Items (X10)	2.7	4.7	3.3	2.7	2.7	4.2	3.2	4.5	2.1	3.2	3.3	3.8	2.3	5.5	7.2	6.2	4.6	5.3	4.9	7	5.7	5.3	6.2	4.7	0.8
◆ Maintenance Items (X10)	2.6	1.8	1.3	2.3	11	16	14.3	16.3	16.1	13.8	15.2	15	21.9	24.3	26.3	24.1	22	21.4	23.8	27.2	21.5	22.6	22.5	21.1	3.3
▲ Flt Hrs into Sta (x100)	4.71	5.06	4.98	5.37	4.77	4.84	4.63	5.02	5.16	5.04	5.73	5.61	10.11	10.74	11.31	11.34	9.95	9.64	10.4	11.24	9.74	8.68	11.01	10.2	1.99
● Delays	1	1	1	3	2	1	3	2	2	5	1	6	1	7	11	6	2	2	5	3	1	1	3	1	0
★ Tot Hrs Grnd Time (x100)	1.43	1.81	1.59	1.36	0.98	1.51	0.78	0.54	0.90	0.65	0.44	0.41	2.23	0.96	1.45	0.57	2.06	2.04	1.43	1.37	2.04	1.88	3.25	2.73	0.31
▼ Cancellations	0	0	0	0	1	0	0	0	0	2	0	0	0	0	1	1	0	0	0	0	0	1	1	0	0
⊖ Total Delay Cost (x10,000)	1.83	0.70	0.84	3.95	4.37	2.11	4.09	4.23	0.84	2.96	0	4.23	0	2.68	9.74	2.68	0.98	0	4.37	3.81	0	5.22	0.70	0.84	0

\*Note: Total hours ground time reflect only those legs having greater than 2 hours and less than 10 hours available prior to departure. Delay Costs derived from SPEC 109. Cnx cost ceiling is calculated as equal to 6 hours delay.