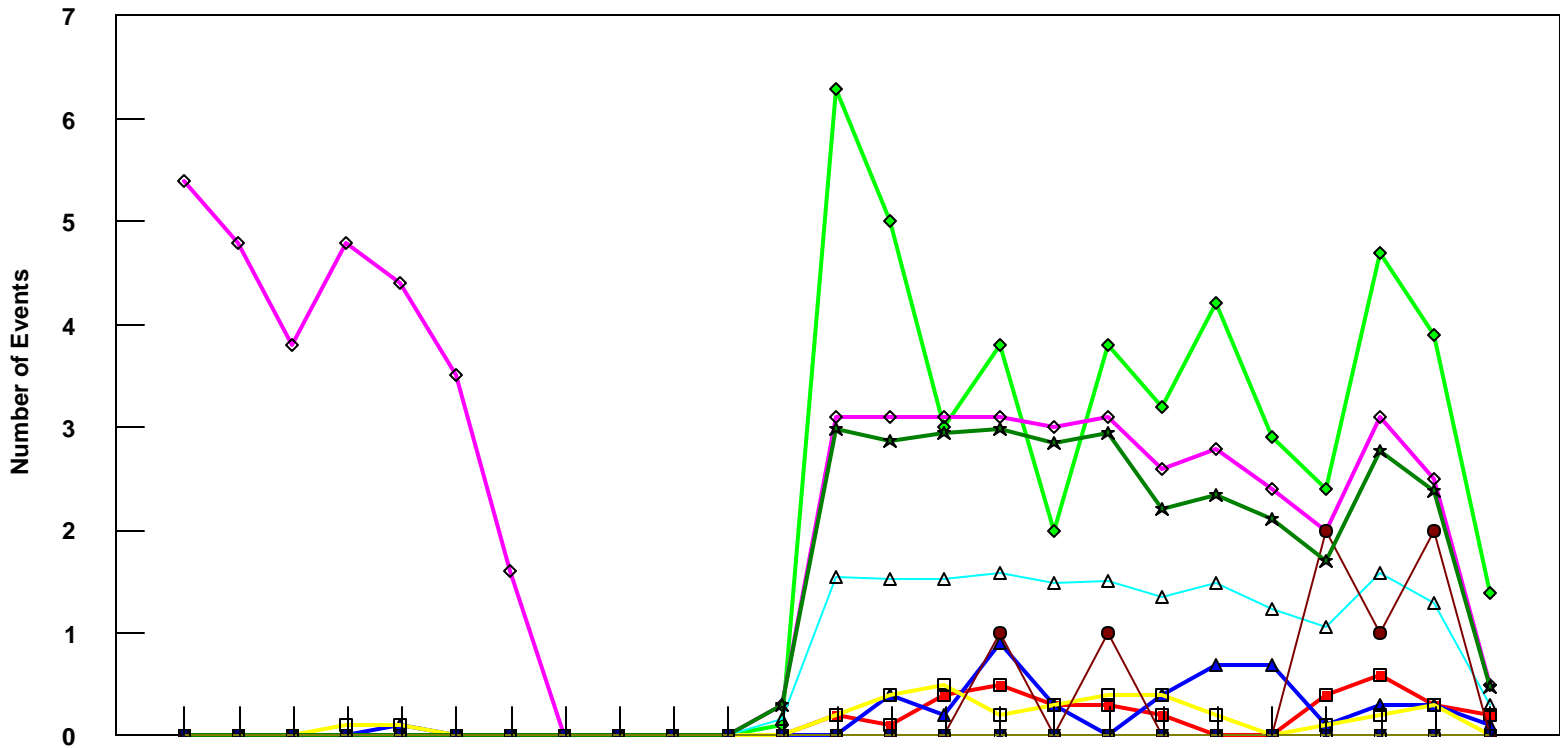


# ITO

## All Fleet Total - Event Count per Month



	4/05	5/05	6/05	7/05	8/05	9/05	10/05	11/05	12/05	1/06	2/06	3/06	4/06	5/06	6/06	7/06	8/06	9/06	10/06	11/06	12/06	1/07	2/07	3/07	4/07
■ Pirep Items (X10)	0	0	0	0	0	0	0	0	0	0	0	0	0.2	0.1	0.4	0.5	0.3	0.3	0.2	0	0	0.4	0.6	0.3	0.2
◆ Maintenance Items (X10)	0	0	0	0	0	0	0	0	0	0	0	0.1	6.3	5	3	3.8	2	3.8	3.2	4.2	2.9	2.4	4.7	3.9	1.4
▲ Scheduled Items (X10)	0	0	0	0	0.1	0	0	0	0	0	0	0	0	0.4	0.2	0.9	0.3	0	0.4	0.7	0.7	0.1	0.3	0.3	0.1
□ MEL Items (X10)	0	0	0	0.1	0.1	0	0	0	0	0	0	0	0.2	0.4	0.5	0.2	0.3	0.4	0.4	0.2	0	0.1	0.2	0.3	0
◇ Deps out of Sta (X10)	5.4	4.8	3.8	4.8	4.4	3.5	1.6	0	0	0	0	0.3	3.1	3.1	3.1	3.1	3	3.1	2.6	2.8	2.4	2	3.1	2.5	0.5
△ Flt Hrs into Sta (x100)	0	0	0	0	0	0	0	0	0	0	0	0.16	1.55	1.52	1.53	1.58	1.49	1.51	1.36	1.49	1.23	1.06	1.59	1.29	0.31
● Delays	0	0	0	0	0	0	0	0	0	0	0	0	0	0	0	1	0	1	0	0	0	2	1	2	0
★ Tot Hrs Grnd Time (x100)	0	0	0	0	0	0	0	0	0	0	0	0.29	2.97	2.86	2.94	2.97	2.84	2.94	2.20	2.33	2.10	1.70	2.77	2.38	0.46
▼ Cancellations	0	0	0	0	0	0	0	0	0	0	0	0	0	0	0	0	0	0	0	0	0	0	0	0	0
⊖ Total Delay Cost (x10,000)	0	0	0	0	0	0	0	0	0	0	0	0	0	0	0	0	0	0	0	0	0	0	0	0	0

**\*Note: Total hours ground time reflect only those legs having greater than 2 hours and less than 10 hours available prior to departure. Delay Costs derived from SPEC 109. Cnx cost ceiling is calculated as equal to 6 hours delay.**