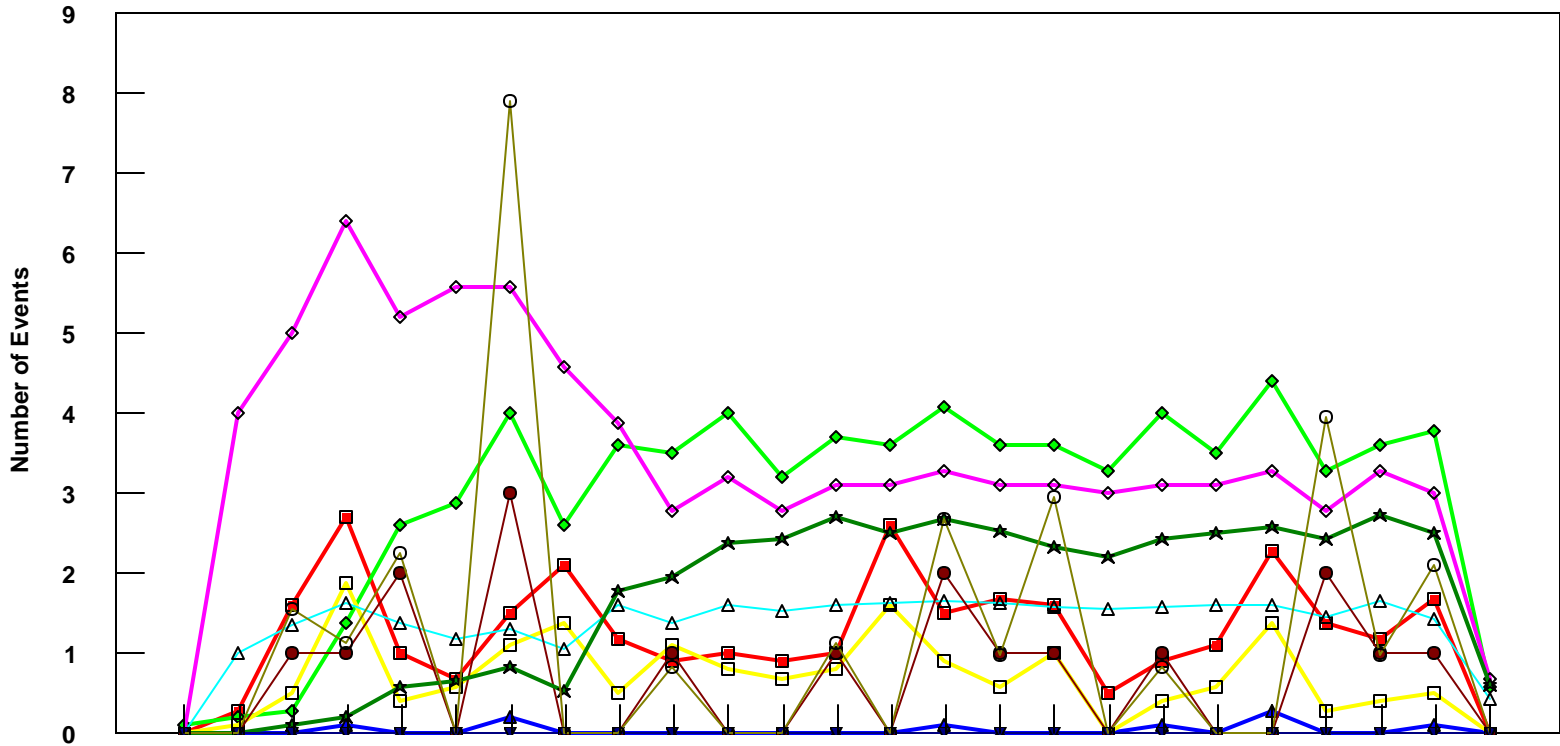


LAS

B757-200 Event Count per Month



	4/05	5/05	6/05	7/05	8/05	9/05	10/05	11/05	12/05	1/06	2/06	3/06	4/06	5/06	6/06	7/06	8/06	9/06	10/06	11/06	12/06	1/07	2/07	3/07	4/07
■ Pirep Items (X10)	0	0.3	1.6	2.7	1	0.7	1.5	2.1	1.2	0.9	1	0.9	1	2.6	1.5	1.7	1.6	0.5	0.9	1.1	2.3	1.4	1.2	1.7	0
◆ Maintenance Items (X10)	0.1	0.2	0.3	1.4	2.6	2.9	4	2.6	3.6	3.5	4	3.2	3.7	3.6	4.1	3.6	3.6	3.3	4	3.5	4.4	3.3	3.6	3.8	0.6
▲ Scheduled Items (X10)	0	0	0	0.1	0	0	0.2	0	0	0	0	0	0	0.1	0	0	0	0	0.1	0	0.3	0	0	0.1	0
□ MEL Items (X10)	0	0.1	0.5	1.9	0.4	0.6	1.1	1.4	0.5	1.1	0.8	0.7	0.8	1.6	0.9	0.6	1	0	0.4	0.6	1.4	0.3	0.4	0.5	0
◇ Deps out of Sta (X10)	0	4	5	6.4	5.2	5.6	5.6	4.6	3.9	2.8	3.2	2.8	3.1	3.1	3.3	3.1	3.1	3	3.1	3.1	3.3	2.8	3.3	3	0.7
△ Flt Hrs into Sta (x100)	0	1.01	1.35	1.63	1.39	1.2	1.32	1.06	1.61	1.39	1.61	1.53	1.62	1.63	1.67	1.64	1.59	1.56	1.58	1.62	1.62	1.46	1.66	1.45	0.43
● Delays	0	0	1	1	2	0	3	0	0	1	0	0	1	0	2	1	1	0	1	0	0	2	1	1	0
★ Tot Hrs Grnd Time (x100)	0	0	0.12	0.22	0.59	0.66	0.83	0.52	1.78	1.97	2.39	2.42	2.70	2.51	2.69	2.54	2.33	2.22	2.44	2.50	2.57	2.43	2.74	2.52	0.60
▼ Cancellations	0	0	0	0	0	0	0	0	0	0	0	0	0	0	0	0	0	0	0	0	0	0	0	0	0
⊖ Total Delay Cost (x10,000)	0	0	1.55	1.13	2.26	0	7.91	0	0	0.84	0	0	1.13	0	2.68	0.98	2.96	0	0.84	0	0	3.95	0.98	2.11	0

***Note: Total hours ground time reflect only those legs having greater than 2 hours and less than 10 hours available prior to departure. Delay Costs derived from SPEC 109. Cnx cost ceiling is calculated as equal to 6 hours delay.**