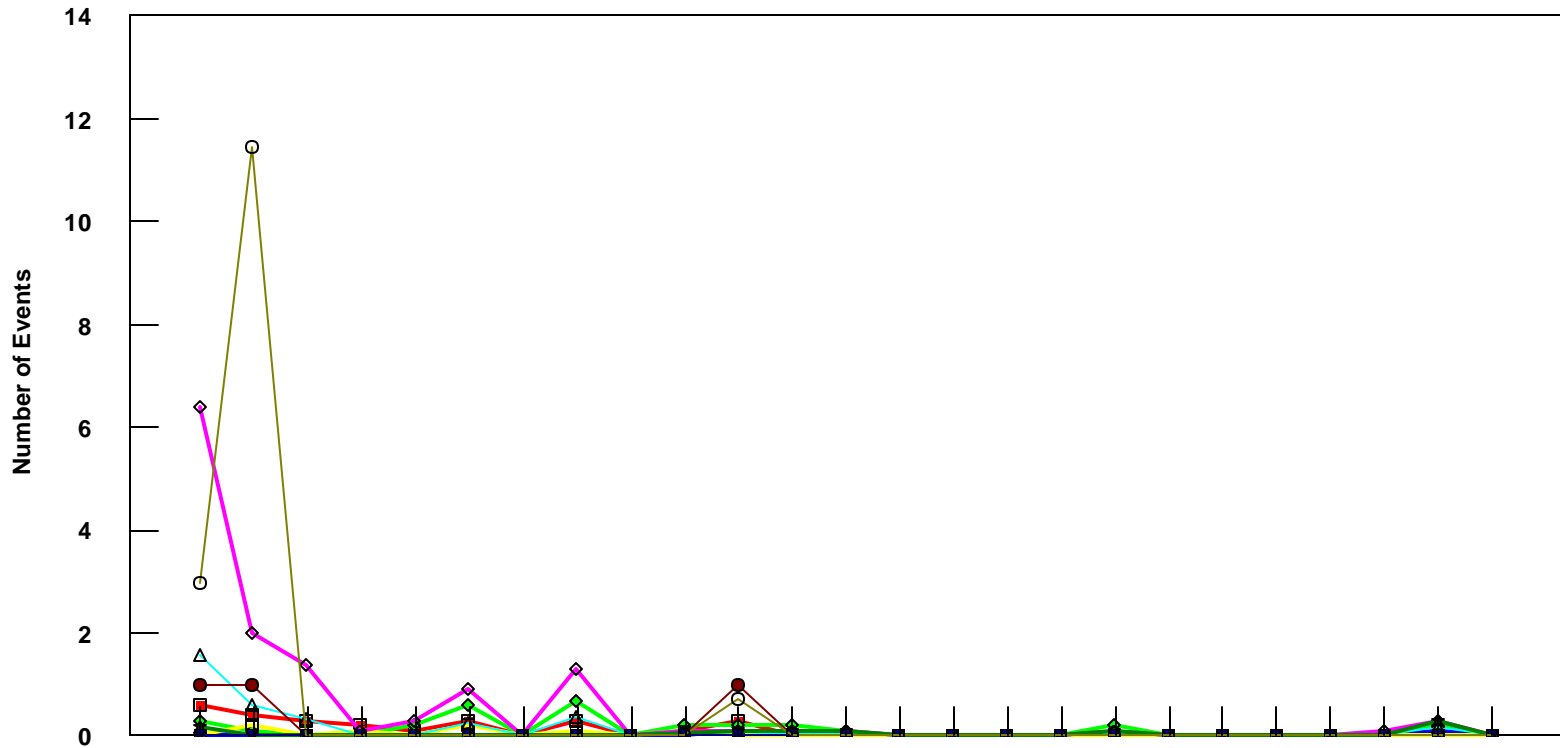


LAS

B757-300 Event Count per Month



	4/05	5/05	6/05	7/05	8/05	9/05	10/05	11/05	12/05	1/06	2/06	3/06	4/06	5/06	6/06	7/06	8/06	9/06	10/06	11/06	12/06	1/07	2/07	3/07	4/07
■ Pirep Items (X10)	0.6	0.4	0.3	0.2	0.1	0.3	0	0.3	0	0.1	0.3	0	0	0	0	0	0	0	0	0	0	0	0	0.1	0
◆ Maintenance Items (X10)	0.3	0.1	0	0	0.2	0.6	0	0.7	0	0.2	0.2	0.2	0.1	0	0	0	0	0.2	0	0	0	0	0	0.2	0
▲ Scheduled Items (X10)	0	0	0	0	0	0	0	0	0	0	0.1	0	0	0	0	0	0	0	0	0	0	0	0	0.1	0
□ MEL Items (X10)	0	0.2	0	0.1	0	0.2	0	0.1	0	0.1	0	0	0	0	0	0	0	0	0	0	0	0	0	0	0
◇ Deps out of Sta (X10)	6.4	2	1.4	0.1	0.3	0.9	0	1.3	0	0.1	0.1	0.1	0.1	0	0	0	0	0.1	0	0	0	0	0.1	0.3	0
▲ Flt Hrs into Sta (x100)	1.59	0.59	0.32	0.02	0	0.26	0	0.36	0	0.05	0	0.05	0.05	0	0	0	0	0.05	0	0	0	0	0.01	0.16	0
● Delays	1	1	0	0	0	0	0	0	0	0	1	0	0	0	0	0	0	0	0	0	0	0	0	0	0
★ Tot Hrs Grnd Time (x100)	0.172	0	0.02	0	0	0.034	0	0.036	0	0.077	0.1	0.096	0.093	0	0	0	0	0.083	0	0	0	0	0.031	0.282	0
▼ Cancellations	0	0	0	0	0	0	0	0	0	0	0	0	0	0	0	0	0	0	0	0	0	0	0	0	0
⊖ Total Delay Cost (x10,000)	2.961	11.44	0	0	0	0	0	0	0	0	0.701	0	0	0	0	0	0	0	0	0	0	0	0	0	0

***Note: Total hours ground time reflect only those legs having greater than 2 hours and less than 10 hours available prior to departure. Delay Costs derived from SPEC 109. Cnx cost ceiling is calculated as equal to 6 hours delay.**