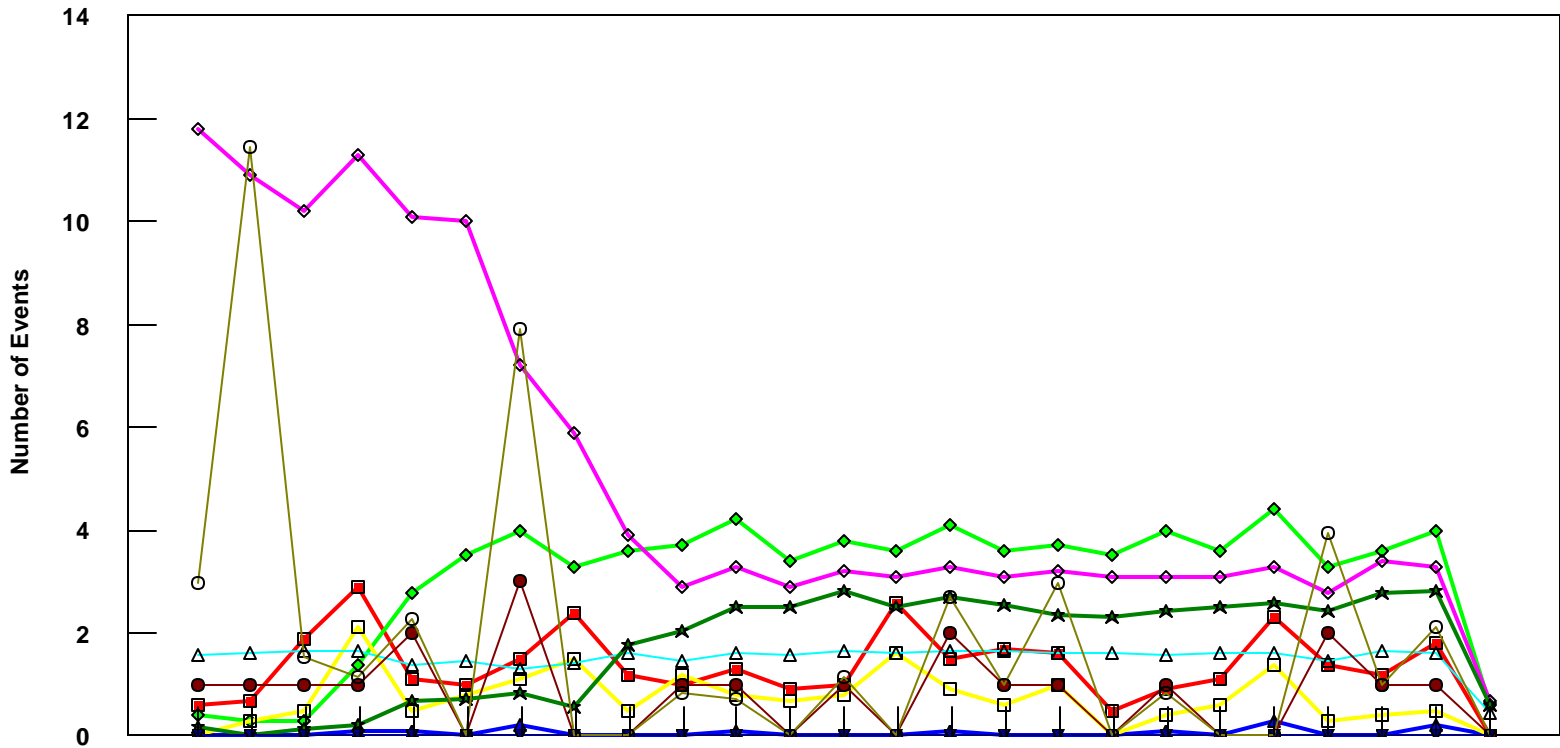


# LAS

## All Fleet Total - Event Count per Month



	4/05	5/05	6/05	7/05	8/05	9/05	10/05	11/05	12/05	1/06	2/06	3/06	4/06	5/06	6/06	7/06	8/06	9/06	10/06	11/06	12/06	1/07	2/07	3/07	4/07
■ Pirep Items (X10)	0.6	0.7	1.9	2.9	1.1	1	1.5	2.4	1.2	1	1.3	0.9	1	2.6	1.5	1.7	1.6	0.5	0.9	1.1	2.3	1.4	1.2	1.8	0
◆ Maintenance Items (X10)	0.4	0.3	0.3	1.4	2.8	3.5	4	3.3	3.6	3.7	4.2	3.4	3.8	3.6	4.1	3.6	3.7	3.5	4	3.6	4.4	3.3	3.6	4	0.6
▲ Flt Hrs into Sta (x100)	1.59	1.6	1.67	1.65	1.39	1.46	1.32	1.42	1.61	1.44	1.61	1.58	1.67	1.63	1.67	1.64	1.6	1.61	1.58	1.62	1.62	1.46	1.67	1.61	0.43
● Delays	1	1	1	1	2	0	3	0	0	1	1	0	1	0	2	1	1	0	1	0	2	1	1	1	0
★ Tot Hrs Grnd Time (x100)	0.172	0	0.141	0.222	0.691	0.702	0.832	0.56	1.782	2.05	2.491	2.511	2.802	2.511	2.692	2.542	2.332	2.302	2.442	2.502	2.572	2.432	2.772	2.802	0.602
▼ Cancellations	0	0	0	0	0	0	0	0	0	0	0	0	0	0	0	0	0	0	0	0	0	0	0	0	0
○ Total Delay Cost (x10,000)	2.962	11.42	1.552	1.13	2.26	0	7.91	0	0	0.842	0.702	0	1.13	0	2.682	0.982	2.962	0	0.842	0	0	3.952	0.982	2.112	0

**\*Note: Total hours ground time reflect only those legs having greater than 2 hours and less than 10 hours available prior to departure. Delay Costs derived from SPEC 109. Cnx cost ceiling is calculated as equal to 6 hours delay.**