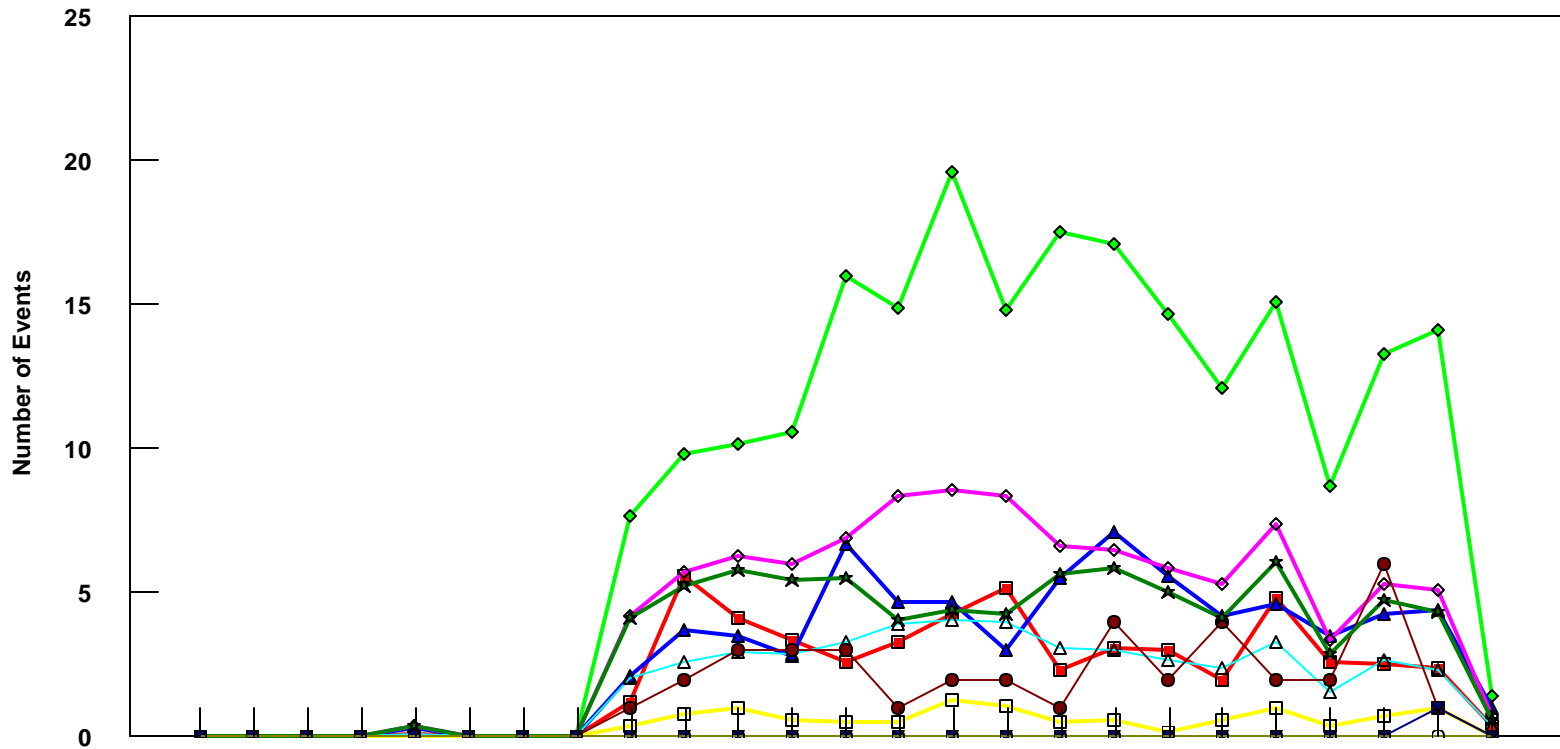


LAX

B737-800 Event Count per Month



	4/05	5/05	6/05	7/05	8/05	9/05	10/05	11/05	12/05	1/06	2/06	3/06	4/06	5/06	6/06	7/06	8/06	9/06	10/06	11/06	12/06	1/07	2/07	3/07	4/07
■ Pirep Items (X10)	0	0	0	0	0.1	0	0	0	1.2	5.6	4.1	3.4	2.6	3.3	4.3	5.2	2.3	3.1	3	2	4.8	2.6	2.5	2.4	0.4
◆ Maintenance Items (X10)	0	0	0	0	0	0	0	0	7.7	9.8	10.2	10.6	16	14.9	19.6	14.8	17.5	17.1	14.7	12.1	15.1	8.7	13.3	14.1	1.4
▲ Scheduled Items (X10)	0	0	0	0	0.3	0	0	0	2.1	3.7	3.5	2.8	6.7	4.7	4.7	3	5.5	7.1	5.6	4.2	4.6	3.5	4.3	4.4	1
□ MEL Items (X10)	0	0	0	0	0	0	0	0	0.4	0.8	1	0.6	0.5	0.5	1.3	1.1	0.5	0.6	0.2	0.6	1	0.4	0.7	1	0
◇ Deps out of Sta (X10)	0	0	0	0	0.4	0	0	0	4.2	5.7	6.3	6	6.9	8.4	8.6	8.4	6.6	6.5	5.9	5.3	7.4	3.4	5.3	5.1	0.7
△ Flt Hrs into Sta (x100)	0	0	0	0	0.09	0	0	0	2.07	2.62	2.93	2.87	3.32	3.94	4.05	3.96	3.08	3	2.67	2.43	3.33	1.56	2.67	2.31	0.39
● Delays	0	0	0	0	0	0	0	0	1	2	3	3	3	1	2	2	1	4	2	4	2	2	6	1	0
★ Tot Hrs Grnd Time (x100)	0	0	0	0	0.36	0	0	0	4.12	5.24	5.81	5.42	5.48	4.05	4.43	4.25	5.63	5.89	5.06	4.15	6.09	2.85	4.77	4.35	0.60
▼ Cancellations	0	0	0	0	0	0	0	0	0	0	0	0	0	0	0	0	0	0	0	0	0	0	0	1	0
⊖ Total Delay Cost (x10,000)	0	0	0	0	0	0	0	0	0	0	0	0	0	0	0	0	0	0	0	0	0	0	0	0	0

*Note: Total hours ground time reflect only those legs having greater than 2 hours and less than 10 hours available prior to departure. Delay Costs derived from SPEC 109. Cnx cost ceiling is calculated as equal to 6 hours delay.