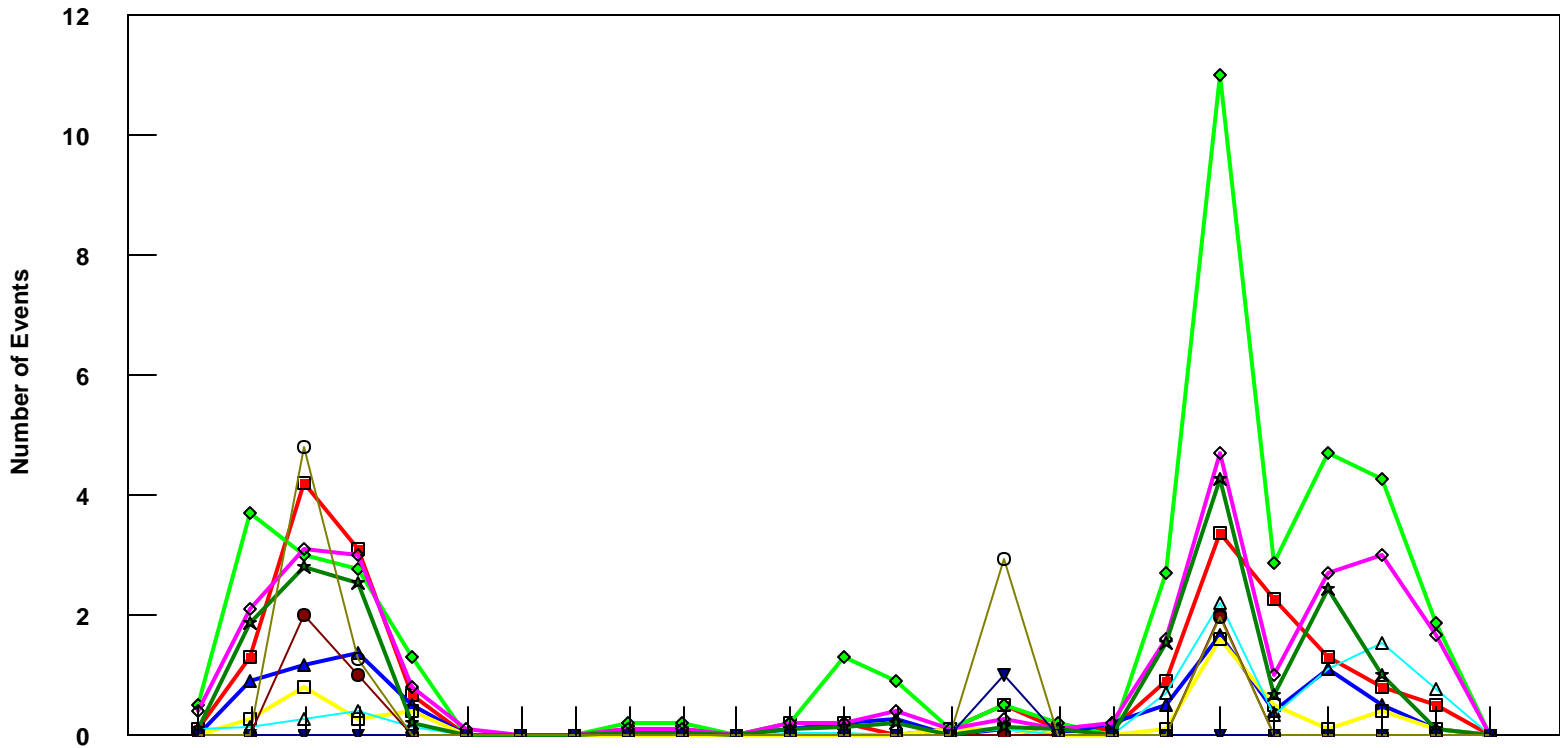


LAX

B757-200 Event Count per Month



	4/05	5/05	6/05	7/05	8/05	9/05	10/05	11/05	12/05	1/06	2/06	3/06	4/06	5/06	6/06	7/06	8/06	9/06	10/06	11/06	12/06	1/07	2/07	3/07	4/07
■ Pirep Items (X10)	0.1	1.3	4.2	3.1	0.7	0	0	0	0.1	0.1	0	0.2	0.2	0	0.1	0.5	0.1	0.1	0.9	3.4	2.3	1.3	0.8	0.5	0
◆ Maintenance Items (X10)	0.5	3.7	3	2.8	1.3	0	0	0	0.2	0.2	0	0.2	1.3	0.9	0.1	0.5	0.2	0	2.7	11	2.9	4.7	4.3	1.9	0
▲ Scheduled Items (X10)	0	0.9	1.2	1.4	0.5	0	0	0	0	0	0	0.1	0.2	0.3	0	0.1	0	0.2	0.5	1.7	0.4	1.1	0.5	0.1	0
□ MEL Items (X10)	0	0.3	0.8	0.3	0.4	0	0	0	0	0	0	0	0	0	0.1	0.1	0	0	0.1	1.6	0.5	0.1	0.4	0.1	0
◇ Deps out of Sta (X10)	0.4	2.1	3.1	3	0.8	0.1	0	0	0.1	0.1	0	0.2	0.2	0.4	0.1	0.3	0.1	0.2	1.6	4.7	1	2.7	3	1.7	0
△ Flt Hrs into Sta (x100)	0.1	0.16	0.29	0.41	0.14	0	0	0	0.01	0	0	0.06	0.05	0	0	0.1	0	0	0.72	2.22	0.34	1.13	1.56	0.79	0
● Delays	0	0	2	1	0	0	0	0	0	0	0	0	0	0	0	0	0	0	2	0	0	0	0	0	0
★ Tot Hrs Grnd Time (x100)	0.12	1.89	2.81	2.54	0.2	0	0	0	0.06	0.04	0	0.1	0.16	0.2	0	0.16	0.1	0	1.55	4.28	0.7	2.45	1	0.1	0
▼ Cancellations	0	0	0	0	0	0	0	0	0	0	0	0	0	0	0	1	0	0	0	0	0	0	0	0	0
⊖ Total Delay Cost (x10,000)	0	0	4.80	1.27	0	0	0	0	0	0	0	0	0	0	0	2.96	0	0	0	1.97	0	0	0	0	0

***Note: Total hours ground time reflect only those legs having greater than 2 hours and less than 10 hours available prior to departure. Delay Costs derived from SPEC 109. Cnx cost ceiling is calculated as equal to 6 hours delay.**