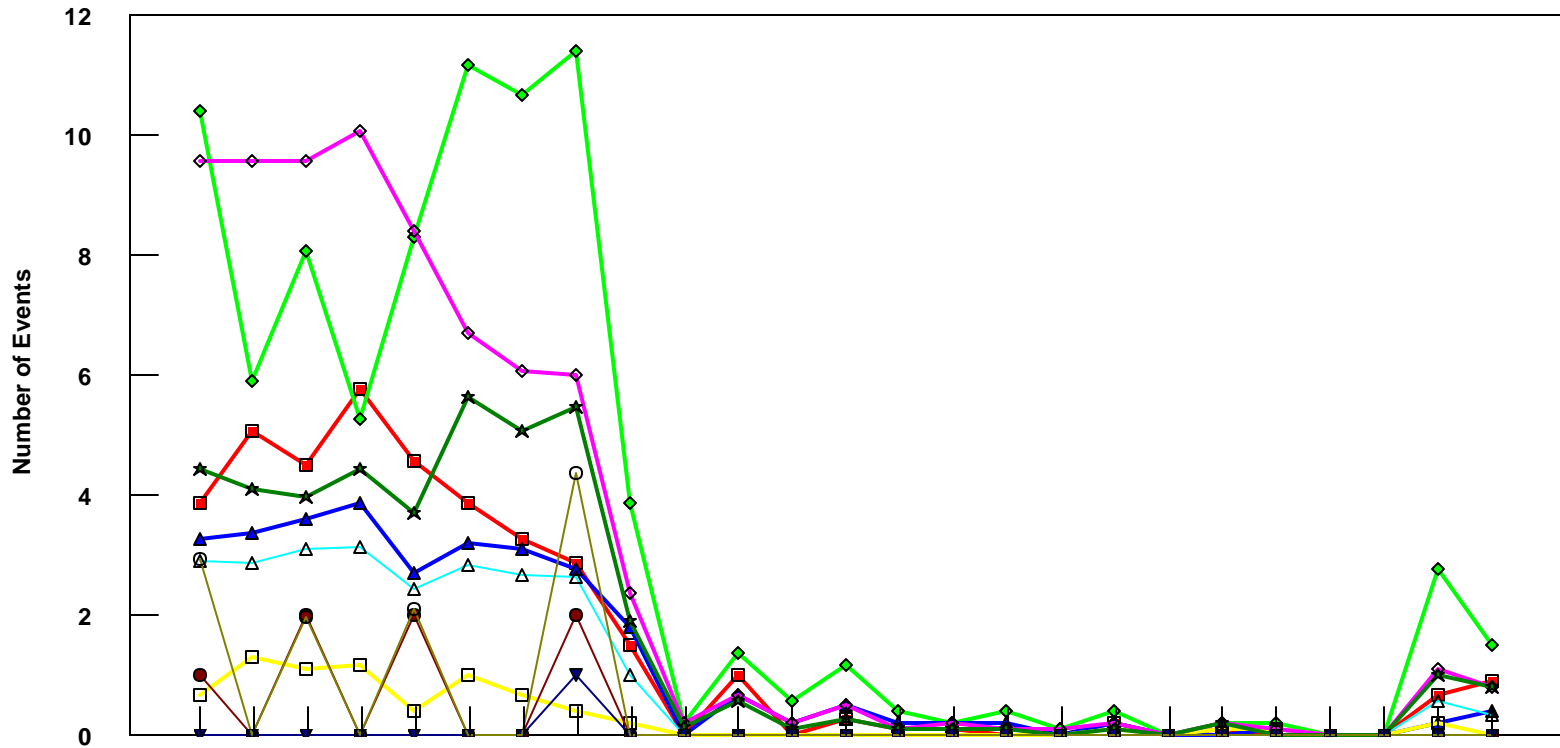


LAX

B757-300 Event Count per Month



	4/05	5/05	6/05	7/05	8/05	9/05	10/05	11/05	12/05	1/06	2/06	3/06	4/06	5/06	6/06	7/06	8/06	9/06	10/06	11/06	12/06	1/07	2/07	3/07	4/07
■ Pirep Items (X10)	3.9	5.1	4.5	5.8	4.6	3.9	3.3	2.9	1.5	0	1	0	0.3	0.1	0.1	0	0	0.2	0	0.1	0	0	0	0.7	0.9
◆ Maintenance Items (X10)	10.4	5.9	8.1	5.3	8.3	11.2	10.7	11.4	3.9	0.2	1.4	0.6	1.2	0.4	0.2	0.4	0.1	0.4	0	0.2	0.2	0	0	2.8	1.5
▲ Scheduled Items (X10)	3.3	3.4	3.6	3.9	2.7	3.2	3.1	2.8	1.8	0	0.7	0.2	0.5	0.2	0.2	0.2	0	0.2	0	0	0.1	0	0	0.2	0.4
□ MEL Items (X10)	0.7	1.3	1.1	1.2	0.4	1	0.7	0.4	0.2	0	0	0	0	0	0	0	0	0.1	0	0.1	0.1	0	0	0.2	0
◇ Deps out of Sta (X10)	9.6	9.6	9.6	10.1	8.4	6.7	6.1	6	2.4	0.2	0.7	0.2	0.5	0.1	0.2	0.1	0.1	0.2	0	0.2	0.1	0	0	1.1	0.8
△ Flt Hrs into Sta (x100)	2.91	2.89	3.1	3.16	2.44	2.86	2.69	2.64	1	0	0	0	0	0	0	0	0	0	0	0	0	0	0	0.58	0.36
● Delays	1	0	2	0	2	0	0	2	0	0	0	0	0	0	0	0	0	0	0	0	0	0	0	0	0
★ Tot Hrs Grnd Time (x100)	4.44	4.11	3.99	4.46	3.71	5.66	5.07	5.47	1.90	0.13	0.6	0.1	0.29	0.1	0.1	0.1	0	0.1	0	0.2	0	0	0	1	0.8
▼ Cancellations	0	0	0	0	0	0	0	1	0	0	0	0	0	0	0	0	0	0	0	0	0	0	0	0	0
⊖ Total Delay Cost (x10,000)	2.96	0	1.97	0	2.11	0	0	4.37	0	0	0	0	0	0	0	0	0	0	0	0	0	0	0	0	0

*Note: Total hours ground time reflect only those legs having greater than 2 hours and less than 10 hours available prior to departure. Delay Costs derived from SPEC 109. Cnx cost ceiling is calculated as equal to 6 hours delay.