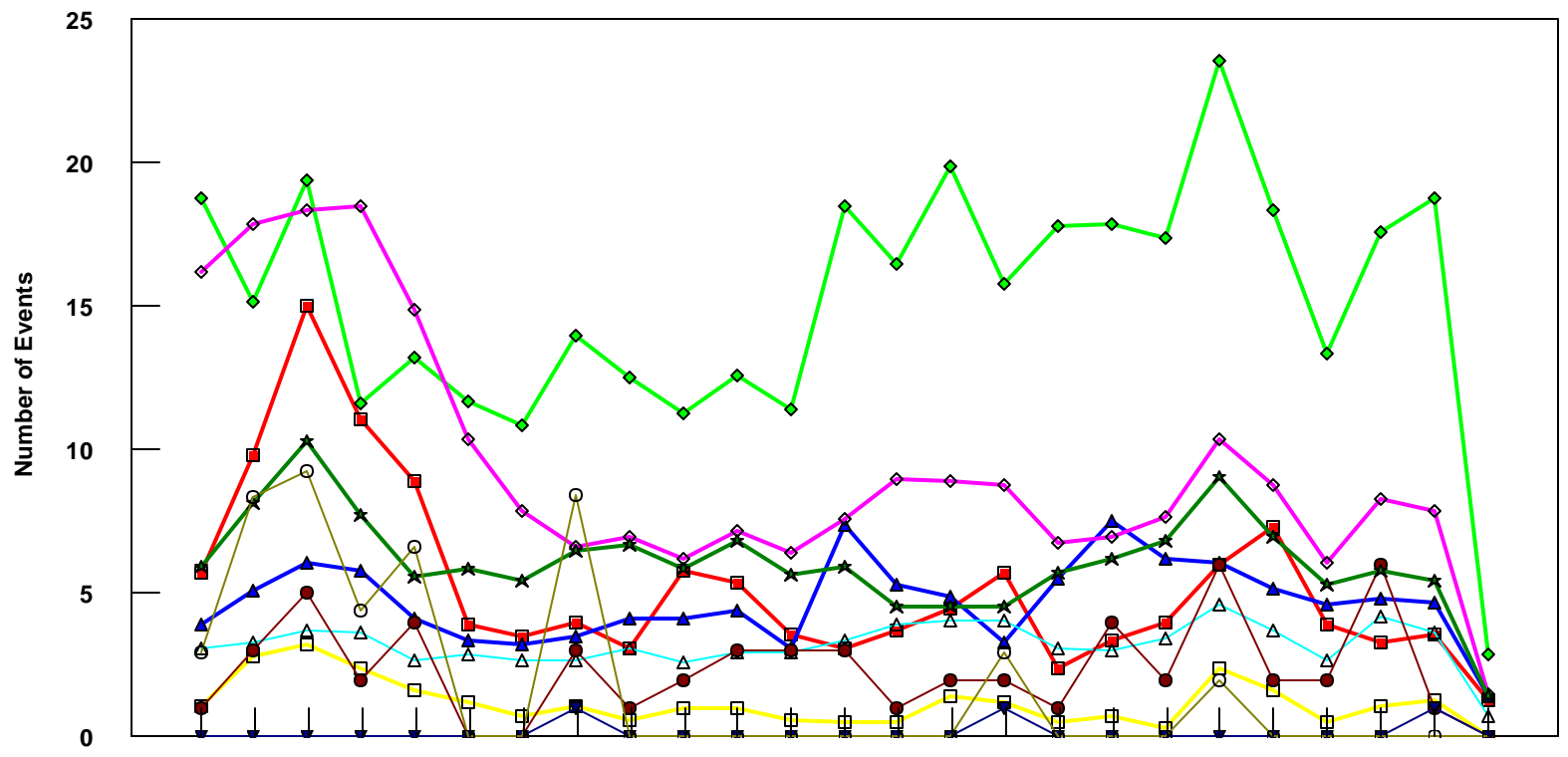


LAX

All Fleet Total - Event Count per Month



	4/05	5/05	6/05	7/05	8/05	9/05	10/05	11/05	12/05	1/06	2/06	3/06	4/06	5/06	6/06	7/06	8/06	9/06	10/06	11/06	12/06	1/07	2/07	3/07	4/07
■ Pirep Items (X10)	5.7	9.8	15	11.1	8.9	3.9	3.5	4	3.1	5.8	5.4	3.6	3.1	3.7	4.5	5.7	2.4	3.4	4	6	7.3	3.9	3.3	3.6	1.3
◆ Maintenance Items (X10)	18.8	15.2	19.4	11.6	13.2	11.7	10.9	14	12.5	11.3	12.6	11.4	18.5	16.5	19.9	15.8	17.8	17.8	17.4	23.8	18.4	13.4	17.6	18.8	2.9
▲ Scheduled Items (X10)	3.9	5.1	6.1	5.8	4.1	3.4	3.2	3.5	4.1	4.1	4.4	3.1	7.4	5.3	4.9	3.3	5.5	7.5	6.2	6.1	5.2	4.6	4.8	4.7	1.4
□ MEL Items (X10)	1.1	2.8	3.2	2.4	1.6	1.2	0.7	1.1	0.6	1	1	0.6	0.5	0.5	1.4	1.2	0.5	0.7	0.3	2.4	1.6	0.5	1.1	1.3	0
◇ Dops out of Sta (X10)	16.2	17.9	18.4	18.5	14.9	10.4	7.9	6.6	7	6.2	7.2	6.4	7.6	9	8.9	8.8	6.8	7	7.7	10.4	8.8	6.1	8.3	7.9	1.5
△ Flt Hrs into Sta (x100)	3.09	3.27	3.74	3.66	2.7	2.86	2.7	2.69	3.08	2.62	2.93	2.93	3.37	3.94	4.05	4.06	3.08	3	3.42	4.65	3.7	2.69	4.23	3.68	0.75
● Delays	1	3	5	2	4	0	0	3	1	2	3	3	3	1	2	2	1	4	2	6	2	2	6	1	0
★ Tot Hrs Grnd Time (x100)	5.97	8.12	10.3	7.74	5.58	5.86	5.47	6.50	6.69	5.83	6.81	5.62	5.94	4.55	4.53	4.51	5.73	6.19	6.81	9.04	6.99	5.30	5.77	5.45	1.40
▼ Cancellations	0	0	0	0	0	0	0	1	0	0	0	0	0	0	0	1	0	0	0	0	0	0	0	1	0
⊖ Total Delay Cost (x10,000)	2.96	8.37	9.26	4.43	6.64	0	0	8.45	0	0	0	0	0	0	0	2.96	0	0	0	1.97	0	0	0	0	0

***Note: Total hours ground time reflect only those legs having greater than 2 hours and less than 10 hours available prior to departure. Delay Costs derived from SPEC 109. Cnx cost ceiling is calculated as equal to 6 hours delay.**