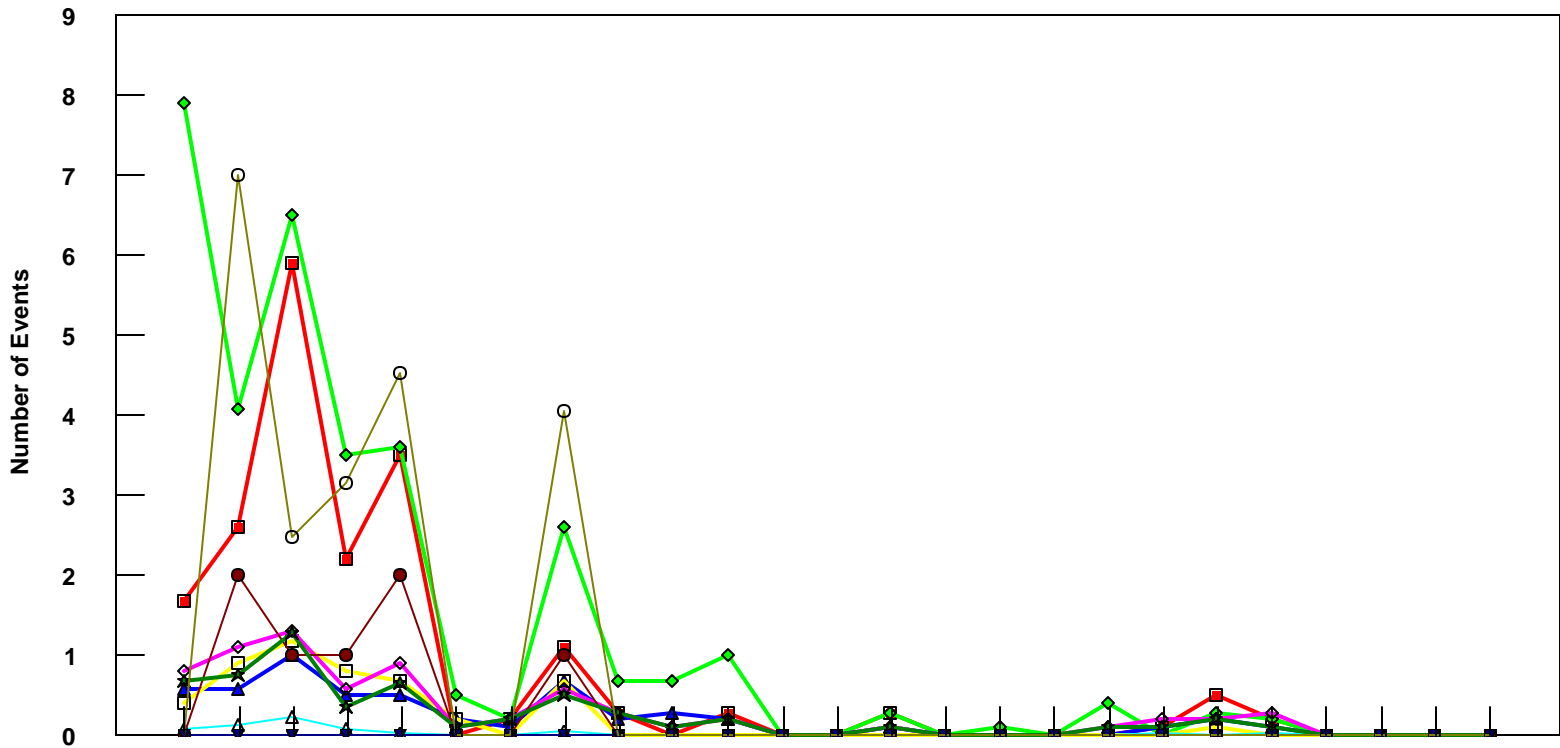


LAX

L1011-500 Event Count per Month



	4/05	5/05	6/05	7/05	8/05	9/05	10/05	11/05	12/05	1/06	2/06	3/06	4/06	5/06	6/06	7/06	8/06	9/06	10/06	11/06	12/06	1/07	2/07	3/07	4/07
■ Pirep Items (X10)	1.7	2.6	5.9	2.2	3.5	0	0.2	1.1	0.3	0	0.3	0	0	0.3	0	0	0	0	0.1	0.5	0.2	0	0	0	0
◆ Maintenance Items (X10)	7.9	4.1	6.5	3.5	3.6	0.5	0.2	2.6	0.7	0.7	1	0	0	0.3	0	0.1	0	0.4	0	0.3	0.2	0	0	0	0
▲ Scheduled Items (X10)	0.6	0.6	1	0.5	0.5	0.2	0.1	0.7	0.2	0.3	0.2	0	0	0.1	0	0	0	0	0.1	0.2	0.1	0	0	0	0
□ MEL Items (X10)	0.4	0.9	1.2	0.8	0.7	0.2	0	0.7	0	0	0	0	0	0	0	0	0	0	0	0.1	0	0	0	0	0
◇ Deps out of Sta (X10)	0.8	1.1	1.3	0.6	0.9	0.1	0.2	0.6	0.3	0.1	0.2	0	0	0.1	0	0	0	0.1	0.2	0.2	0.3	0	0	0	0
△ Flt Hrs into Sta (x100)	0.08	0.14	0.23	0.09	0.03	0	0.01	0.05	0	0	0	0	0	0	0	0	0	0	0.03	0	0.03	0	0	0	0
● Delays	0	2	1	1	2	0	0	1	0	0	0	0	0	0	0	0	0	0	0	0	0	0	0	0	0
★ Tot Hrs Grnd Time (x100)	0.69%	0.75%	1.28%	0.36%	0.65%	0.1	0.2	0.51%	0.3	0.1	0.2	0	0	0.1	0	0	0	0.1	0.1	0.2	0.1	0	0	0	0
▼ Cancellations	0	0	0	0	0	0	0	0	0	0	0	0	0	0	0	0	0	0	0	0	0	0	0	0	0
⊖ Total Delay Cost (x10,000)	0	7.01%	2.48%	3.16%	4.52%	0	0	4.07%	0	0	0	0	0	0	0	0	0	0	0	0	0	0	0	0	0

***Note: Total hours ground time reflect only those legs having greater than 2 hours and less than 10 hours available prior to departure. Delay Costs derived from SPEC 109. Cnx cost ceiling is calculated as equal to 6 hours delay.**