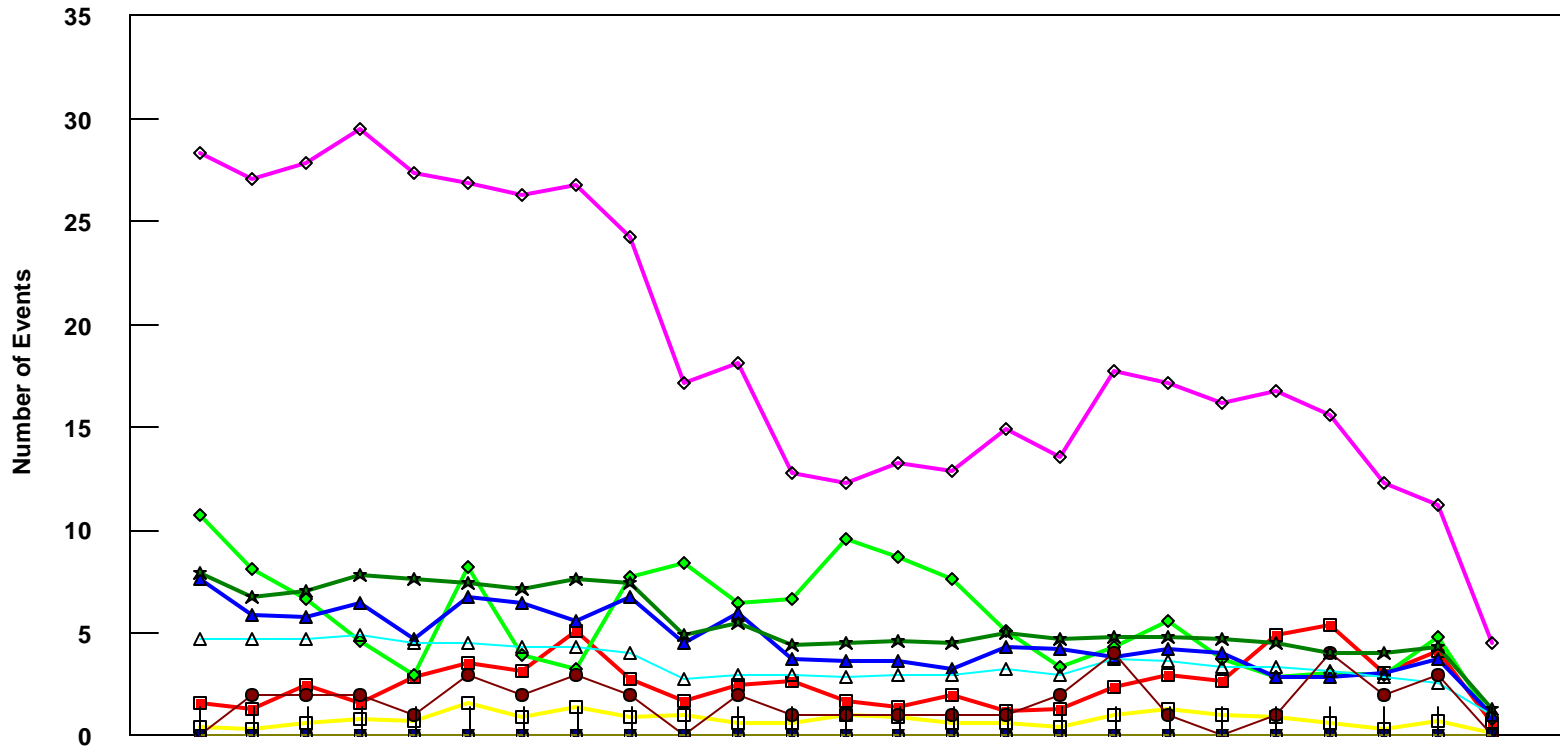


# LGA

## B737-800 Event Count per Month



	4/05	5/05	6/05	7/05	8/05	9/05	10/05	11/05	12/05	1/06	2/06	3/06	4/06	5/06	6/06	7/06	8/06	9/06	10/06	11/06	12/06	1/07	2/07	3/07	4/07
■ Pirep Items (X10)	1.6	1.3	2.5	1.6	2.9	3.5	3.2	5.1	2.8	1.7	2.5	2.7	1.7	1.4	2	1.2	1.3	2.4	3	2.7	4.9	5.4	3.1	4.1	0.6
◆ Maintenance Items (X10)	10.7	8.1	6.7	4.6	3	8.2	3.9	3.3	7.7	8.4	6.5	6.7	9.6	8.7	7.6	5.1	3.4	4.3	5.6	3.7	2.9	3.1	3	4.8	0.8
▲ Scheduled Items (X10)	7.6	5.9	5.8	6.5	4.7	6.8	6.5	5.6	6.8	4.5	6	3.7	3.6	3.6	3.3	4.3	4.2	3.8	4.2	4	2.9	2.9	3.1	3.7	1
□ MEL Items (X10)	0.4	0.3	0.6	0.8	0.7	1.6	0.9	1.4	0.9	1	0.6	0.6	1	0.9	0.6	0.6	0.4	1	1.3	1	0.9	0.6	0.3	0.7	0.1
◇ Deps out of Sta (X10)	28.3	27.1	27.9	29.5	27.4	26.9	26.3	26.8	24.3	17.2	18.1	12.8	12.3	13.3	12.9	14.9	13.6	17.7	17.2	16.2	16.8	15.6	12.3	11.2	4.5
△ Flt Hrs into Sta (x100)	4.71	4.74	4.7	4.89	4.5	4.56	4.34	4.37	4.06	2.77	2.97	2.92	2.82	2.95	2.94	3.21	3.01	3.72	3.63	3.34	3.4	3.15	2.82	2.61	1
● Delays	0	2	2	2	1	3	2	3	2	0	2	1	1	1	1	1	2	4	1	4	1	4	2	3	0
★ Tot Hrs Grnd Time (x100)	7.91	6.77	7.07	7.87	7.58	7.40	7.16	7.64	7.39	4.87	5.44	4.43	4.51	4.62	4.54	4.98	4.74	4.79	4.81	4.68	4.55	4.05	4.05	4.35	1.27
▼ Cancellations	0	0	0	0	0	0	0	0	0	0	0	0	0	0	0	0	0	0	0	0	0	0	0	0	0
⊖ Total Delay Cost (x10,000)	0	0	0	0	0	0	0	0	0	0	0	0	0	0	0	0	0	0	0	0	0	0	0	0	0

\*Note: Total hours ground time reflect only those legs having greater than 2 hours and less than 10 hours available prior to departure. Delay Costs derived from SPEC 109. Cnx cost ceiling is calculated as equal to 6 hours delay.