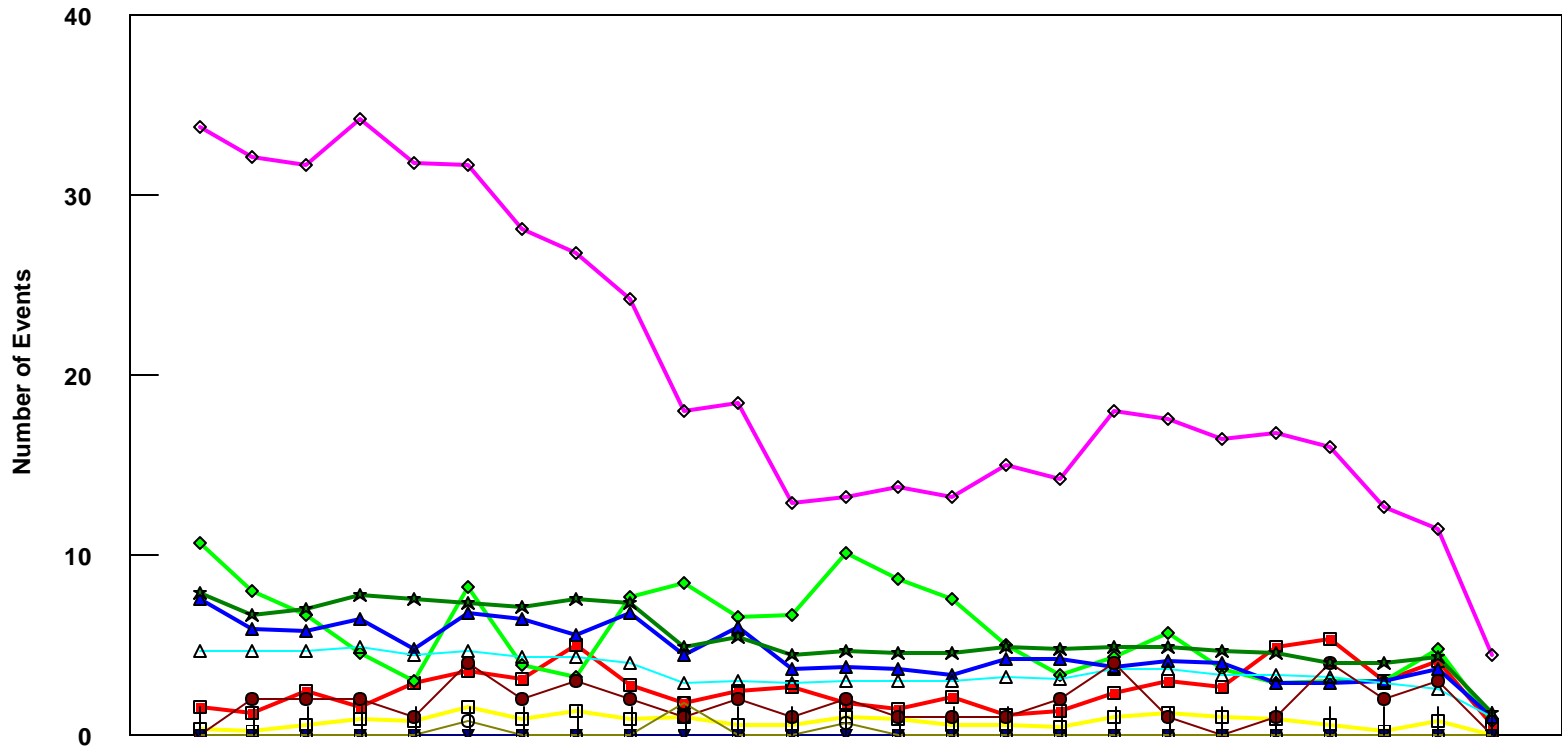


LGA

All Fleet Total - Event Count per Month



	4/05	5/05	6/05	7/05	8/05	9/05	10/05	11/05	12/05	1/06	2/06	3/06	4/06	5/06	6/06	7/06	8/06	9/06	10/06	11/06	12/06	1/07	2/07	3/07	4/07
■ Pirep Items (X10)	1.6	1.3	2.5	1.6	2.9	3.6	3.2	5.1	2.8	1.8	2.5	2.7	1.8	1.5	2.2	1.2	1.4	2.4	3	2.7	4.9	5.4	3.1	4.2	0.6
◆ Maintenance Items (X10)	10.7	8.1	6.7	4.6	3	8.3	3.9	3.3	7.7	8.5	6.6	6.7	10.2	8.7	7.6	5.1	3.4	4.4	5.7	3.7	2.9	3.1	3	4.8	0.8
▲ Scheduled Items (X10)	7.6	5.9	5.8	6.5	4.8	6.8	6.5	5.6	6.8	4.5	6.1	3.7	3.8	3.7	3.4	4.3	4.3	3.8	4.2	4	2.9	2.9	3.1	3.7	1
□ MEL Items (X10)	0.4	0.3	0.6	0.9	0.8	1.6	0.9	1.4	0.9	1.1	0.6	0.6	1	0.9	0.6	0.6	0.5	1	1.3	1	0.9	0.6	0.3	0.8	0.1
◇ Deps out of Sta (X10)	33.8	32.2	31.7	34.3	31.8	31.7	28.2	26.8	24.3	18	18.5	12.9	13.3	13.8	13.3	15	14.3	18	17.6	16.5	16.8	16.1	12.7	11.5	4.5
△ Flt Hrs into Sta (x100)	4.73	4.77	4.7	4.89	4.5	4.77	4.4	4.37	4.06	2.92	3.05	2.94	3.02	3.04	3.01	3.23	3.13	3.77	3.69	3.39	3.4	3.24	2.89	2.65	1
● Delays	0	2	2	2	1	4	2	3	2	1	2	1	2	1	1	1	2	4	1	0	1	4	2	3	0
★ Tot Hrs Grnd Time (x100)	7.91	6.77	7.07	7.87	7.58	7.40	7.16	7.64	7.39	4.97	5.54	4.52	4.73	4.66	4.56	4.98	4.84	4.98	4.91	4.68	4.55	4.05	4.05	4.43	1.27
▼ Cancellations	0	0	0	0	0	0	0	0	0	0	0	0	0	0	0	0	0	0	0	0	0	0	0	0	0
⊖ Total Delay Cost (x10,000)	0	0	0	0	0	0.84	0	0	0	1.83	0	0	0.70	0	0	0	0	0	0	0	0	0	0	0	0

*Note: Total hours ground time reflect only those legs having greater than 2 hours and less than 10 hours available prior to departure. Delay Costs derived from SPEC 109. Cnx cost ceiling is calculated as equal to 6 hours delay.