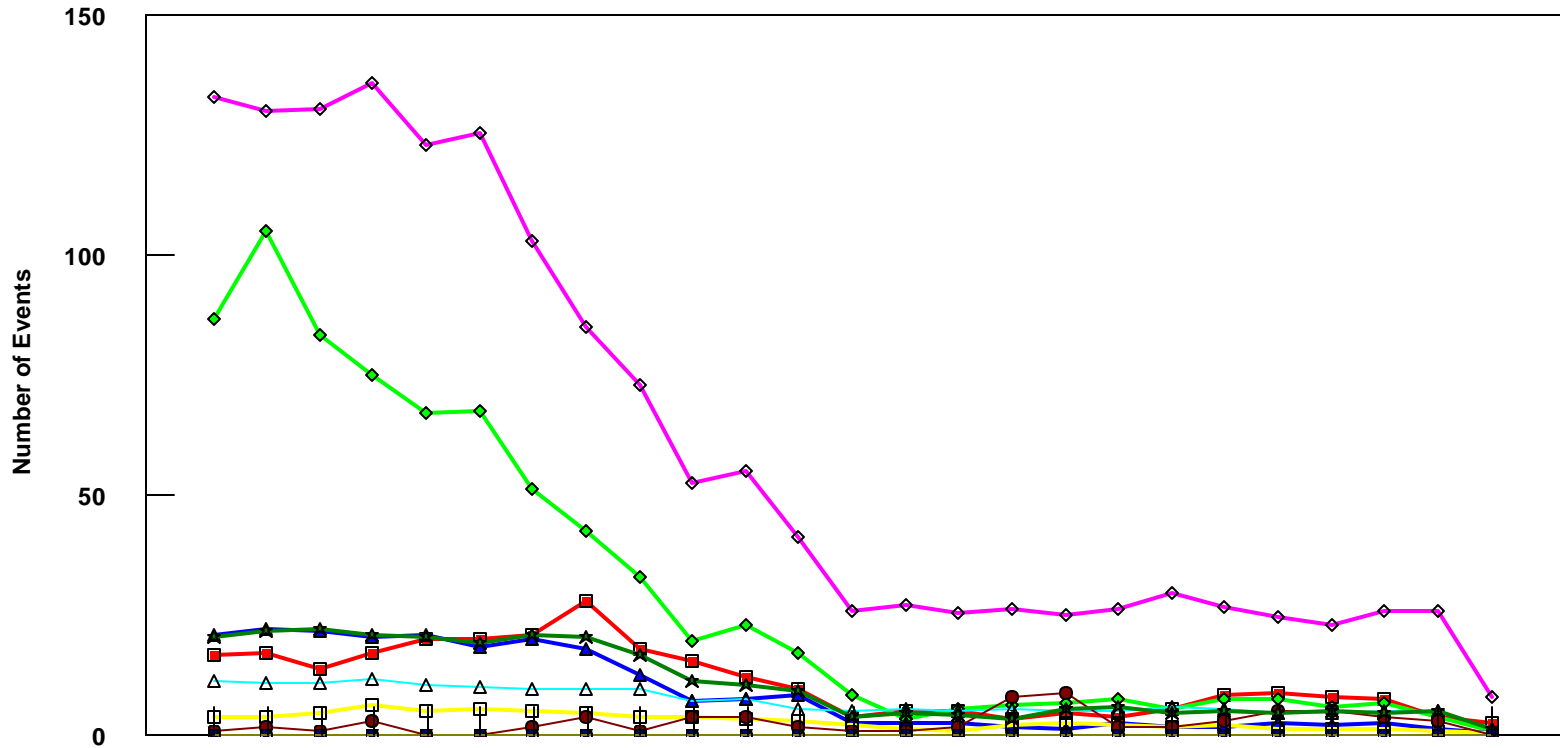


MDW

B737-800 Event Count per Month



	4/05	5/05	6/05	7/05	8/05	9/05	10/05	11/05	12/05	1/06	2/06	3/06	4/06	5/06	6/06	7/06	8/06	9/06	10/06	11/06	12/06	1/07	2/07	3/07	4/07
■ Pirep Items (X10)	16.9	17.4	14	17.1	20.4	20.3	20.9	28.3	18.3	15.6	12.3	9.8	3.9	5.1	5.3	3.6	4.6	4.1	5.8	8.4	9	8	7.8	4.1	2.6
◆ Maintenance Items (X10)	87	105	83.4	75.1	67.1	67.5	51.4	42.7	33.2	19.7	23.1	17.1	8.7	3.4	5.5	6.6	6.9	7.7	5.8	7.7	7.9	6.1	6.7	4	1
▲ Scheduled Items (X10)	21.2	22.1	21.9	20.5	21	18.6	20.2	18.1	12.9	7.4	7.9	8.4	2.6	2.7	2.7	1.8	1.6	2.6	1.7	2	2.6	2.2	2.7	1.4	0.6
□ MEL Items (X10)	4.1	3.8	4.8	6.3	5.3	5.8	5.4	4.8	4	4.1	3.7	3	2.1	1.5	1.1	2.1	2.8	2.3	1.7	2.4	1.5	1.4	1.6	1	0.8
◇ Deps out of Sta (X10)	133	130.1	130.1	135.1	123.1	125.1	103.1	85.4	73	52.6	55.3	41.6	26	27.3	25.5	26.6	25.2	26.4	29.7	26.7	24.6	23.3	26.1	25.9	8.3
△ Flt Hrs into Sta (x100)	11.6	10.9	11.2	11.7	10.5	10.2	9.85	9.98	9.87	7.32	7.71	5.67	5.31	5.65	5.29	5.57	5.01	5.33	5.96	5.48	4.95	4.73	5.28	5	1.55
● Delays	1	2	1	3	0	0	2	4	1	4	10	2	1	1	2	8	9	2	2	3	5	5	4	3	0
★ Tot Hrs Grnd Time (x100)	20.5	21.7	22.2	20.8	20.7	19.3	20.9	20.4	17.0	11.4	11.7	9.30	4.02	4.62	4.39	3.58	5.43	5.89	4.70	5.24	4.91	5.01	4.79	5.36	1.45
▼ Cancellations	0	0	0	0	0	0	0	0	0	0	0	0	0	0	0	0	0	0	0	0	0	0	0	0	0
⊖ Total Delay Cost (x10,000)	0	0	0	0	0	0	0	0	0	0	0	0	0	0	0	0	0	0	0	0	0	0	0	0	0

*Note: Total hours ground time reflect only those legs having greater than 2 hours and less than 10 hours available prior to departure. Delay Costs derived from SPEC 109. Cnx cost ceiling is calculated as equal to 6 hours delay.