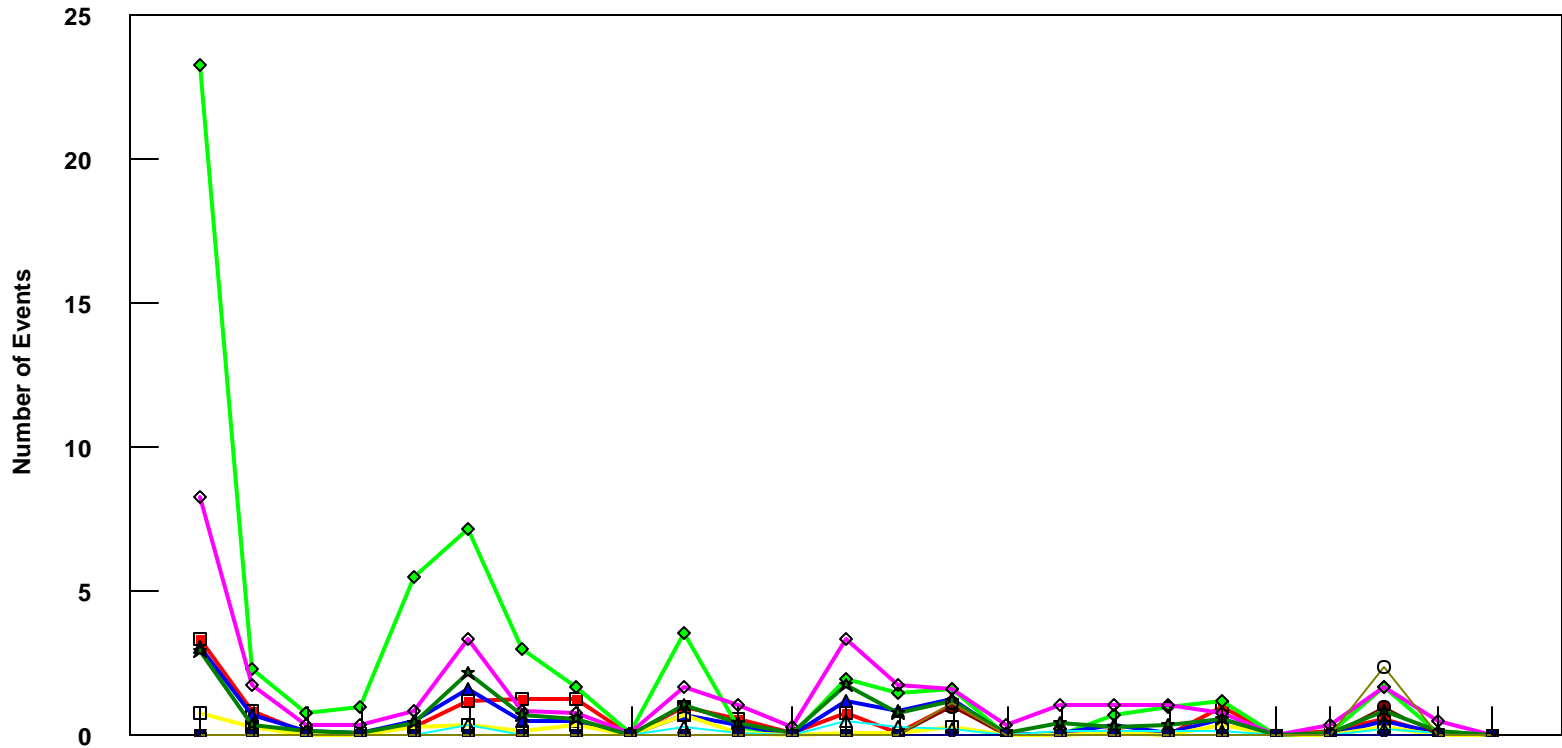


MDW B757-200 Event Count per Month



	4/05	5/05	6/05	7/05	8/05	9/05	10/05	11/05	12/05	1/06	2/06	3/06	4/06	5/06	6/06	7/06	8/06	9/06	10/06	11/06	12/06	1/07	2/07	3/07	4/07
■ Pirep Items (X10)	3.4	0.9	0.1	0.1	0.3	1.2	1.3	1.3	0	1	0.6	0.1	0.8	0.1	1.1	0	0	0.2	0	1	0	0.2	0.6	0	0
◆ Maintenance Items (X10)	23.3	2.3	0.8	1	5.5	7.2	3	1.7	0.1	3.6	0.3	0	2	1.5	1.6	0	0	0.7	1	1.2	0	0.1	1.7	0.1	0
▲ Scheduled Items (X10)	3.1	0.7	0.2	0.1	0.5	1.6	0.5	0.5	0	0.7	0.4	0	1.2	0.9	1.3	0	0.1	0.4	0.1	0.6	0	0	0.5	0.1	0
□ MEL Items (X10)	0.8	0.3	0	0	0.3	0.4	0.2	0.4	0	0.7	0.1	0	0.1	0.1	0.3	0	0	0.1	0	0.4	0	0	0.3	0	0
◇ Dops out of Sta (X10)	8.3	1.8	0.4	0.4	0.9	3.4	0.9	0.8	0.1	1.7	1.1	0.3	3.4	1.8	1.6	0.4	1.1	1.1	1.1	0.8	0	0.4	1.7	0.5	0
△ Flt Hrs into Sta (x100)	0.04	0	0.03	0	0	0.41	0.05	0.06	0	0.3	0.1	0.03	0.55	0.3	0.22	0.05	0.15	0.17	0.18	0.14	0	0.06	0.24	0.08	0
● Delays	0	0	0	0	0	0	0	0	0	0	0	0	0	0	1	0	0	0	0	0	0	0	1	0	0
★ Tot Hrs Grnd Time (x100)	2.94	0.35	0.17	0.12	0.45	2.17	0.71	0.60	0	1.04	0.47	0.08	1.74	0.83	1.23	0.09	0.47	0.3	0.4	0.56	0	0.09	0.84	0.2	0
▼ Cancellations	0	0	0	0	0	0	0	0	0	0	0	0	0	0	0	0	0	0	0	0	0	0	0	0	0
⊖ Total Delay Cost (x10,000)	0	0	0	0	0	0	0	0	0	0	0	0	0	0	1.13	0	0	0	0	0	0	0	2.40	0	0

***Note: Total hours ground time reflect only those legs having greater than 2 hours and less than 10 hours available prior to departure. Delay Costs derived from SPEC 109. Cnx cost ceiling is calculated as equal to 6 hours delay.**