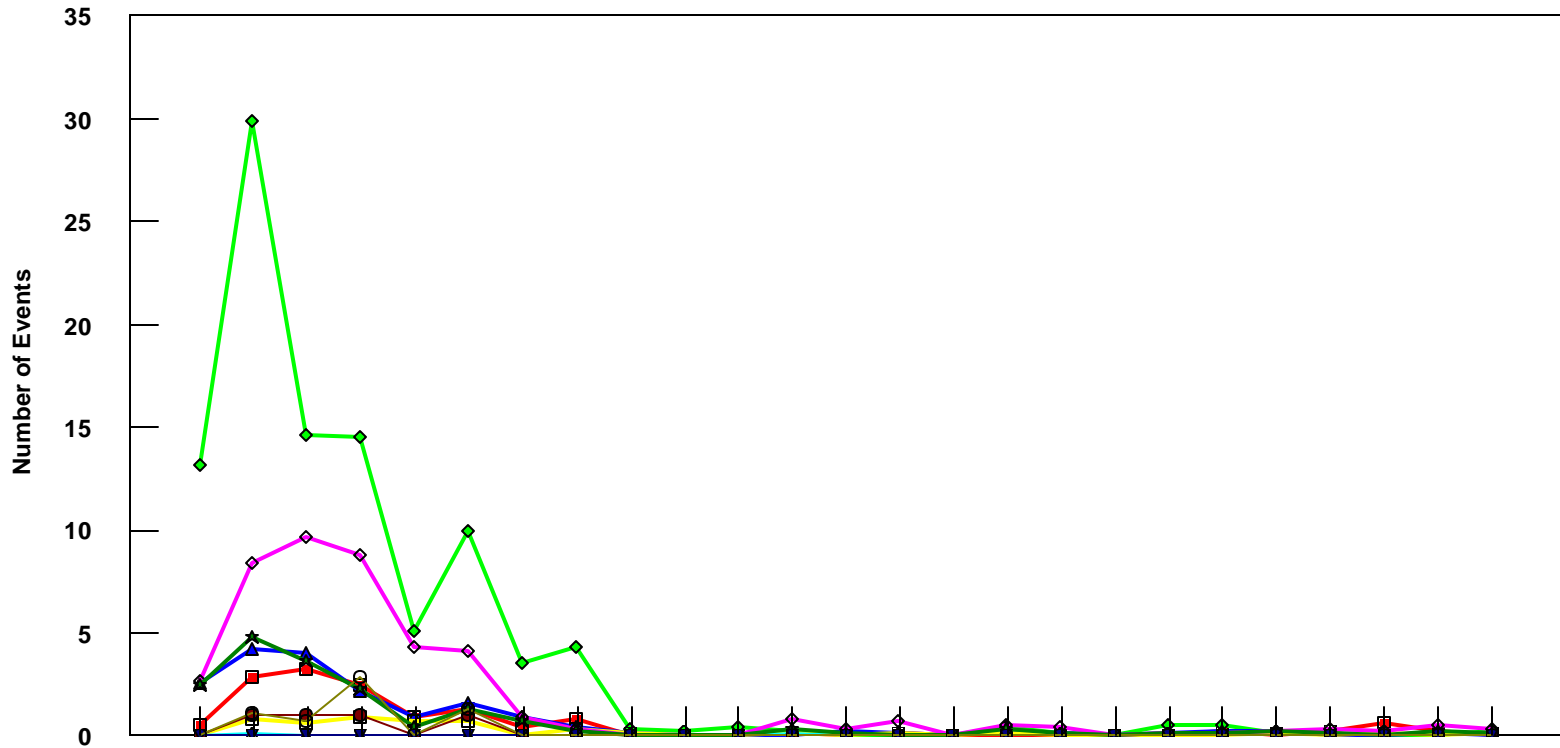


MDW

B757-300 Event Count per Month



	4/05	5/05	6/05	7/05	8/05	9/05	10/05	11/05	12/05	1/06	2/06	3/06	4/06	5/06	6/06	7/06	8/06	9/06	10/06	11/06	12/06	1/07	2/07	3/07	4/07
■ Pirep Items (X10)	0.5	2.9	3.3	2.5	0.9	1.3	0.4	0.8	0	0	0	0.1	0	0.1	0	0	0	0	0	0.2	0	0.2	0.6	0.2	0
◆ Maintenance Items (X10)	13.2	29.9	14.6	14.5	5.1	10	3.5	4.3	0.3	0.2	0.4	0.2	0	0	0	0.4	0.1	0	0.5	0.5	0.1	0.1	0	0	0.2
▲ Scheduled Items (X10)	2.6	4.2	4	2.2	0.9	1.6	0.9	0.4	0.1	0	0	0	0.2	0.1	0	0.2	0.1	0	0.1	0.2	0.2	0	0	0.1	0
□ MEL Items (X10)	0	0.8	0.6	0.9	0.7	0.7	0	0.3	0.1	0	0	0.1	0	0.1	0	0.1	0	0	0	0	0.1	0	0.1	0	0.1
◇ Deps out of Sta (X10)	2.7	8.4	9.7	8.8	4.3	4.1	0.9	0.3	0	0	0	0.8	0.3	0.7	0	0.5	0.4	0	0.1	0.1	0.2	0.3	0.2	0.5	0.3
▲ Flt Hrs into Sta (x100)	0.03	0.15	0.05	0.02	0	0.07	0.09	0	0	0	0	0.1	0.03	0.08	0	0.09	0.04	0	0	0	0.03	0.04	0.02	0.09	0.04
● Delays	0	1	1	1	0	1	0	0	0	0	0	0	0	0	0	0	0	0	0	0	0	0	0	0	0
★ Tot Hrs Grnd Time (x100)	2.52	4.8	3.60	2.33	0.45	1.32	0.68	0.25	0	0	0	0.32	0.13	0.07	0	0.3	0.1	0	0.1	0.1	0.2	0.12	0.02	0.19	0.11
▼ Cancellations	0	0	0	0	0	0	0	0	0	0	0	0	0	0	0	0	0	0	0	0	0	0	0	0	0
⊖ Total Delay Cost (x10,000)	0	1.15	0.70	2.82	0	1.27	0	0	0	0	0	0	0	0	0	0	0	0	0	0	0	0	0	0	0

***Note: Total hours ground time reflect only those legs having greater than 2 hours and less than 10 hours available prior to departure. Delay Costs derived from SPEC 109. Cnx cost ceiling is calculated as equal to 6 hours delay.**