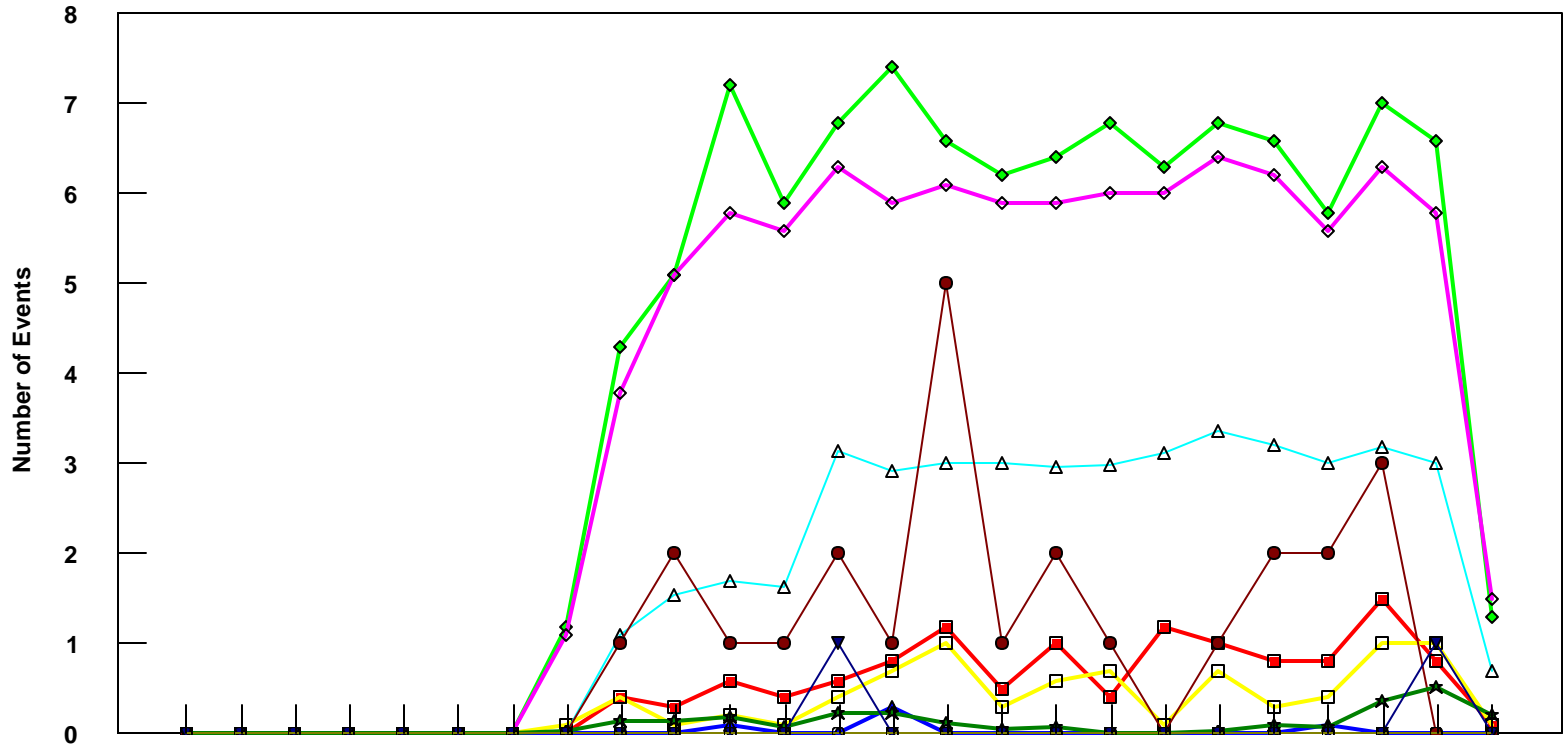


# OGG

## B737-800 Event Count per Month



	4/05	5/05	6/05	7/05	8/05	9/05	10/05	11/05	12/05	1/06	2/06	3/06	4/06	5/06	6/06	7/06	8/06	9/06	10/06	11/06	12/06	1/07	2/07	3/07	4/07
■ Pirep Items (X10)	0	0	0	0	0	0	0	0	0.4	0.3	0.6	0.4	0.6	0.8	1.2	0.5	1	0.4	1.2	1	0.8	0.8	1.5	0.8	0.1
◆ Maintenance Items (X10)	0	0	0	0	0	0	0	1.2	4.3	5.1	7.2	5.9	6.8	7.4	6.6	6.2	6.4	6.8	6.3	6.8	6.6	5.8	7	6.6	1.3
▲ Scheduled Items (X10)	0	0	0	0	0	0	0	0	0	0	0.1	0	0	0.3	0	0	0	0	0	0	0	0.1	0	0	0
□ MEL Items (X10)	0	0	0	0	0	0	0	0.1	0.4	0.1	0.2	0.1	0.4	0.7	1	0.3	0.6	0.7	0.1	0.7	0.3	0.4	1	1	0.1
◇ Deps out of Sta (X10)	0	0	0	0	0	0	0	1.1	3.8	5.1	5.8	5.6	6.3	5.9	6.1	5.9	5.9	6	6	6.4	6.2	5.6	6.3	5.8	1.5
△ Fit Hrs into Sta (x100)	0	0	0	0	0	0	0	0	1.1	1.54	1.69	1.64	3.14	2.92	3	3	2.97	2.98	3.12	3.36	3.22	3	3.18	3.01	0.7
● Delays	0	0	0	0	0	0	0	0	1	2	1	1	2	1	5	1	2	1	0	1	2	2	3	0	0
★ Tot Hrs Grnd Time (x100)	0	0	0	0	0	0	0	0.02	0.13	0.15	0.18	0.08	0.23	0.23	0.11	0.05	0.08	0	0	0.02	0.09	0.06	0.36	0.52	0.20
▼ Cancellations	0	0	0	0	0	0	0	0	0	0	0	0	1	0	0	0	0	0	0	0	0	0	0	1	0
⊖ Total Delay Cost (x10,000)	0	0	0	0	0	0	0	0	0	0	0	0	0	0	0	0	0	0	0	0	0	0	0	0	0

\*Note: Total hours ground time reflect only those legs having greater than 2 hours and less than 10 hours available prior to departure. Delay Costs derived from SPEC 109. Cnx cost ceiling is calculated as equal to 6 hours delay.