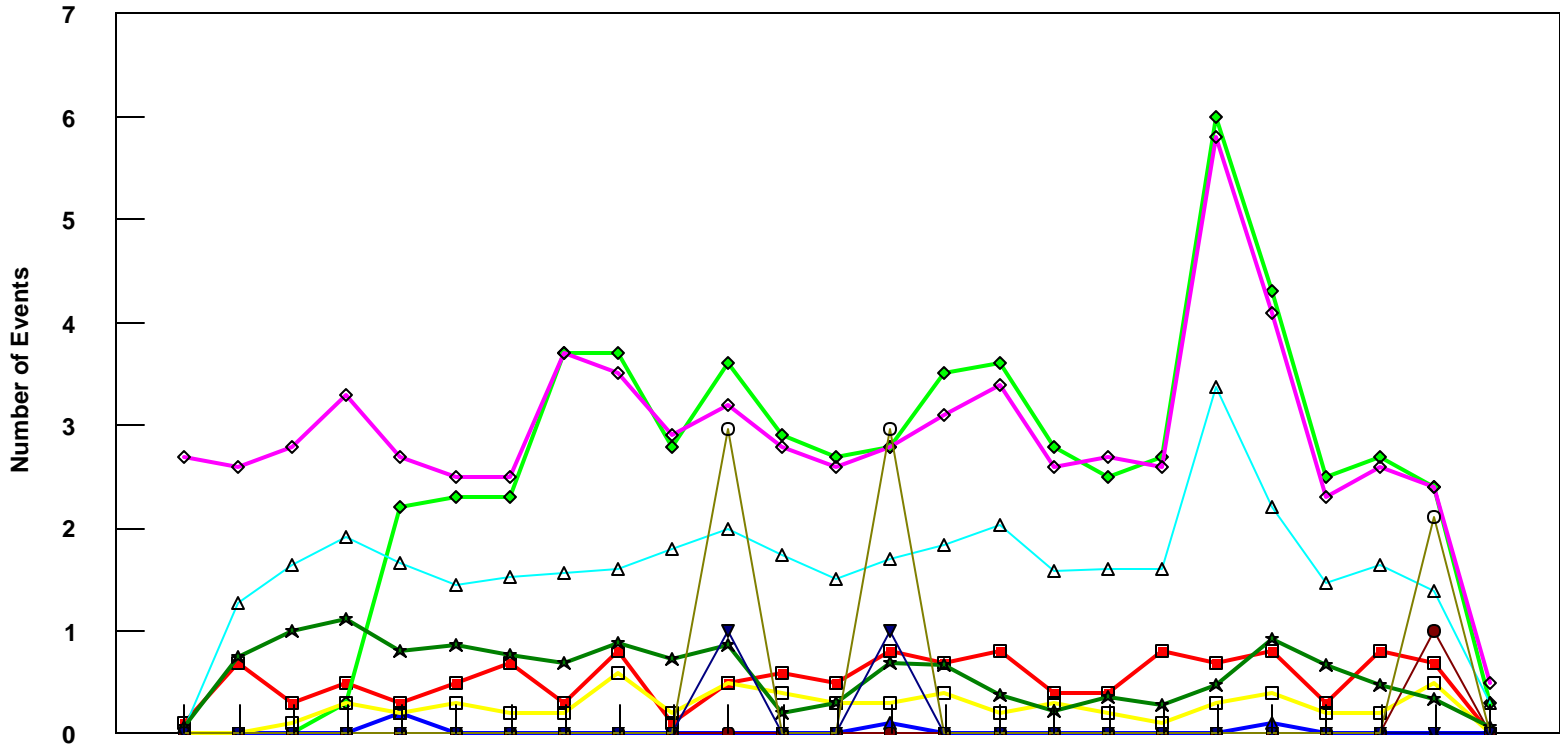


# OGG

## B757-200 Event Count per Month



	4/05	5/05	6/05	7/05	8/05	9/05	10/05	11/05	12/05	1/06	2/06	3/06	4/06	5/06	6/06	7/06	8/06	9/06	10/06	11/06	12/06	1/07	2/07	3/07	4/07
■ Pirep Items (X10)	0.1	0.7	0.3	0.5	0.3	0.5	0.7	0.3	0.8	0.1	0.5	0.6	0.5	0.8	0.7	0.8	0.4	0.4	0.8	0.7	0.8	0.3	0.8	0.7	0
◆ Maintenance Items (X10)	0	0	0	0.3	2.2	2.3	2.3	3.7	3.7	2.8	3.6	2.9	2.7	2.8	3.5	3.6	2.8	2.5	2.7	6	4.3	2.5	2.7	2.4	0.3
▲ Scheduled Items (X10)	0	0	0	0	0.2	0	0	0	0	0	0	0	0	0.1	0	0	0	0	0	0	0.1	0	0	0	0
□ MEL Items (X10)	0	0	0.1	0.3	0.2	0.3	0.2	0.2	0.6	0.2	0.5	0.4	0.3	0.3	0.4	0.2	0.3	0.2	0.1	0.3	0.4	0.2	0.2	0.5	0
◇ Dps out of Sta (X10)	2.7	2.6	2.8	3.3	2.7	2.5	2.5	3.7	3.5	2.9	3.2	2.8	2.6	2.8	3.1	3.4	2.6	2.7	2.6	5.8	4.1	2.3	2.6	2.4	0.5
△ Flt Hrs into Sta (x100)	0.05	1.27	1.64	1.91	1.66	1.44	1.53	1.57	1.6	1.8	1.99	1.74	1.51	1.7	1.83	2.03	1.59	1.61	1.6	3.37	2.2	1.46	1.65	1.39	0.3
● Delays	0	0	0	0	0	0	0	0	0	0	0	0	0	0	0	0	0	0	0	0	0	0	0	1	0
★ Tot Hrs Grnd Time (x100)	0.06	0.74	1.01	1.12	0.79	0.87	0.76	0.68	0.89	0.72	0.87	0.20	0.30	0.68	0.66	0.37	0.22	0.35	0.28	0.46	0.92	0.66	0.47	0.34	0.07
▼ Cancellations	0	0	0	0	0	0	0	0	0	0	1	0	0	1	0	0	0	0	0	0	0	0	0	0	0
⊖ Total Delay Cost (x10,000)	0	0	0	0	0	0	0	0	0	0	2.96	0	0	2.96	0	0	0	0	0	0	0	0	0	2.11	0

**\*Note: Total hours ground time reflect only those legs having greater than 2 hours and less than 10 hours available prior to departure. Delay Costs derived from SPEC 109. Cnx cost ceiling is calculated as equal to 6 hours delay.**