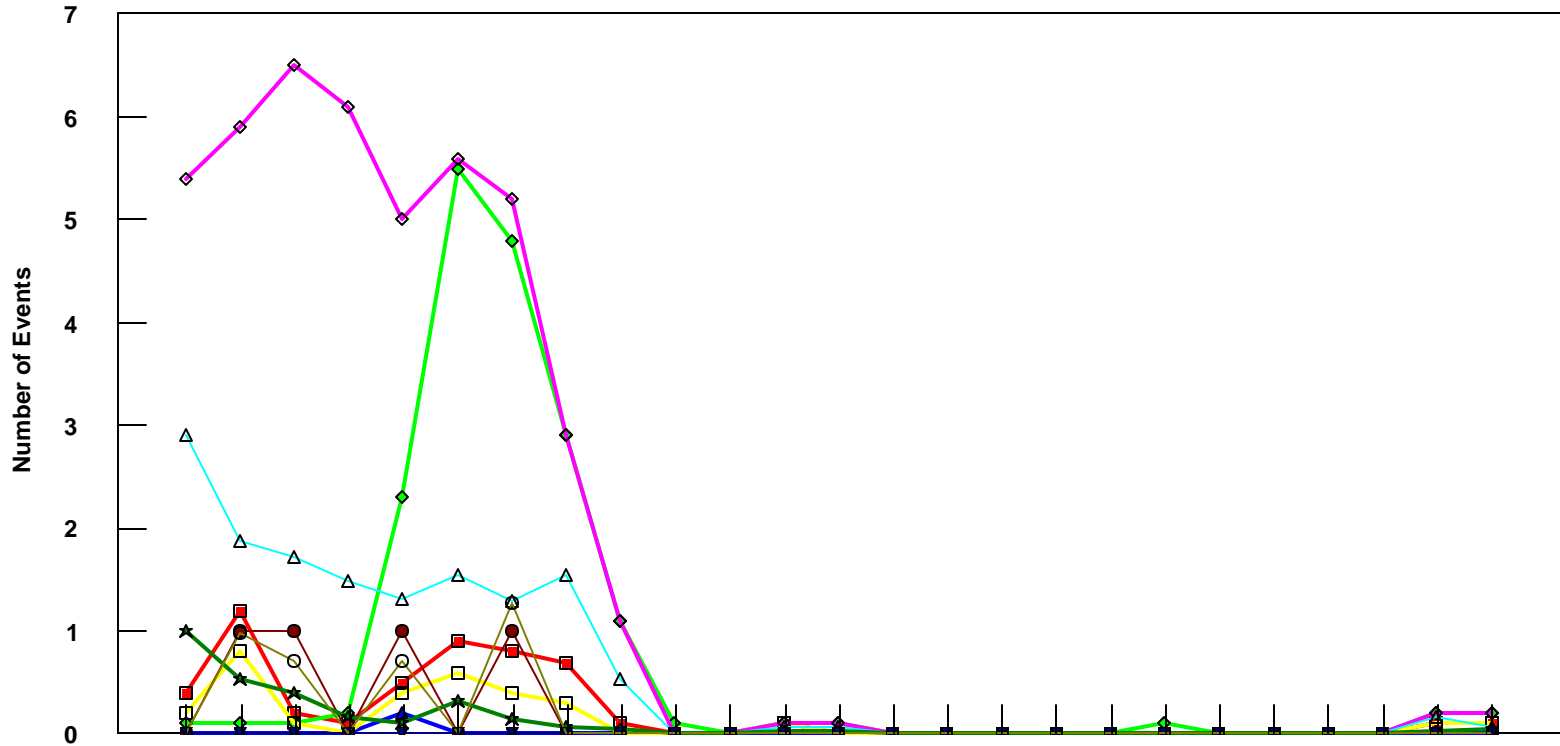


OGG

B757-300 Event Count per Month



	4/05	5/05	6/05	7/05	8/05	9/05	10/05	11/05	12/05	1/06	2/06	3/06	4/06	5/06	6/06	7/06	8/06	9/06	10/06	11/06	12/06	1/07	2/07	3/07	4/07
■ Pirep Items (X10)	0.4	1.2	0.2	0.1	0.5	0.9	0.8	0.7	0.1	0	0	0.1	0	0	0	0	0	0	0	0	0	0	0	0.1	0.1
◆ Maintenance Items (X10)	0.1	0.1	0.1	0.2	2.3	5.5	4.8	2.9	1.1	0.1	0	0.1	0.1	0	0	0	0	0	0.1	0	0	0	0	0.2	0.2
▲ Scheduled Items (X10)	0	0	0	0	0.2	0	0	0	0	0	0	0	0	0	0	0	0	0	0	0	0	0	0	0	0
□ MEL Items (X10)	0.2	0.8	0.1	0	0.4	0.6	0.4	0.3	0	0	0	0.1	0	0	0	0	0	0	0	0	0	0	0	0.1	0.1
◇ Deps out of Sta (X10)	5.4	5.9	6.5	6.1	5	5.6	5.2	2.9	1.1	0	0	0.1	0.1	0	0	0	0	0	0	0	0	0	0	0.2	0.2
△ Flt Hrs into Sta (x100)	2.9	1.88	1.73	1.48	1.31	1.54	1.29	1.55	0.53	0	0	0.06	0.06	0	0	0	0	0	0	0	0	0	0	0.17	0.06
● Delays	0	1	1	0	1	0	1	0	0	0	0	0	0	0	0	0	0	0	0	0	0	0	0	0	0
★ Tot Hrs Grnd Time (x100)	0.99	0.53	0.40	0.16	0.10	0.31	0.14	0.06	0.05	0	0	0.02	0.02	0	0	0	0	0	0	0	0	0	0	0.027	0.047
▼ Cancellations	0	0	0	0	0	0	0	0	0	0	0	0	0	0	0	0	0	0	0	0	0	0	0	0	0
⊖ Total Delay Cost (x10,000)	0	0.98	0.70	0	0.70	0	1.27	0	0	0	0	0	0	0	0	0	0	0	0	0	0	0	0	0	0

***Note: Total hours ground time reflect only those legs having greater than 2 hours and less than 10 hours available prior to departure. Delay Costs derived from SPEC 109. Cnx cost ceiling is calculated as equal to 6 hours delay.**