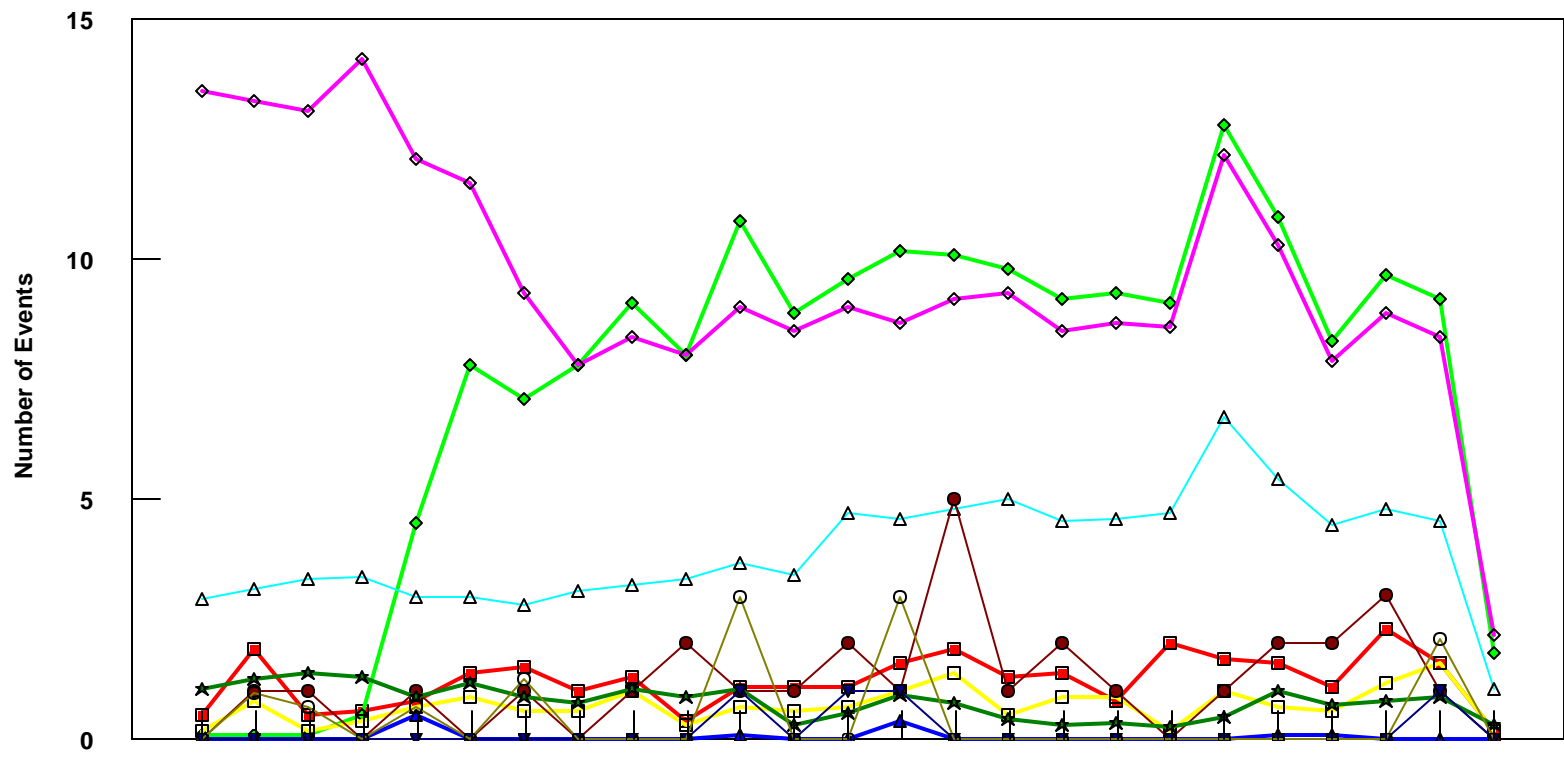


OGG

All Fleet Total - Event Count per Month



	4/05	5/05	6/05	7/05	8/05	9/05	10/05	11/05	12/05	1/06	2/06	3/06	4/06	5/06	6/06	7/06	8/06	9/06	10/06	11/06	12/06	1/07	2/07	3/07	4/07
■ Pirep Items (X10)	0.5	1.9	0.5	0.6	0.8	1.4	1.5	1	1.3	0.4	1.1	1.1	1.1	1.6	1.9	1.3	1.4	0.8	2	1.7	1.6	1.1	2.3	1.6	0.2
◆ Maintenance Items (X10)	0.1	0.1	0.1	0.5	4.5	7.8	7.1	7.8	9.1	8	10.8	8.9	9.6	10.2	10.1	9.8	9.2	9.3	9.1	12.8	10.9	8.3	9.7	9.2	1.8
▲ Scheduled Items (X10)	0	0	0	0	0.5	0	0	0	0	0	0.1	0	0	0.4	0	0	0	0	0	0	0.1	0.1	0	0	0
□ MEL Items (X10)	0.2	0.8	0.2	0.4	0.7	0.9	0.6	0.6	1	0.3	0.7	0.6	0.7	1	1.4	0.5	0.9	0.9	0.2	1	0.7	0.6	1.2	1.6	0.2
◇ Deps out of Sta (X10)	13.5	13.3	13.1	14.2	12.1	11.6	9.3	7.8	8.4	8	9	8.5	9	8.7	9.2	9.3	8.5	8.7	8.6	12.2	10.3	7.9	8.9	8.4	2.2
△ Flt Hrs into Sta (x100)	2.95	3.15	3.37	3.39	2.97	2.98	2.82	3.12	3.23	3.34	3.68	3.44	4.71	4.62	4.83	5.03	4.56	4.59	4.72	6.73	5.42	4.46	4.83	4.57	1.06
● Delays	0	1	1	0	1	0	1	0	1	2	1	1	2	1	5	1	2	1	0	1	2	2	3	1	0
★ Tot Hrs Grnd Time (x100)	1.054	1.274	1.412	1.291	0.902	1.184	0.911	0.78	1.083	0.874	1.064	0.304	0.564	0.914	0.777	0.437	0.31	0.354	0.284	0.494	1.022	0.734	0.837	0.897	0.322
▼ Cancellations	0	0	0	0	0	0	0	0	0	0	1	0	1	1	0	0	0	0	0	0	0	0	0	1	0
⊖ Total Delay Cost (x10,000)	0	0.984	0.704	0	0.704	0	1.274	0	0	0	2.964	0	0	2.964	0	0	0	0	0	0	0	0	0	2.114	0

***Note: Total hours ground time reflect only those legs having greater than 2 hours and less than 10 hours available prior to departure. Delay Costs derived from SPEC 109. Cnx cost ceiling is calculated as equal to 6 hours delay.**