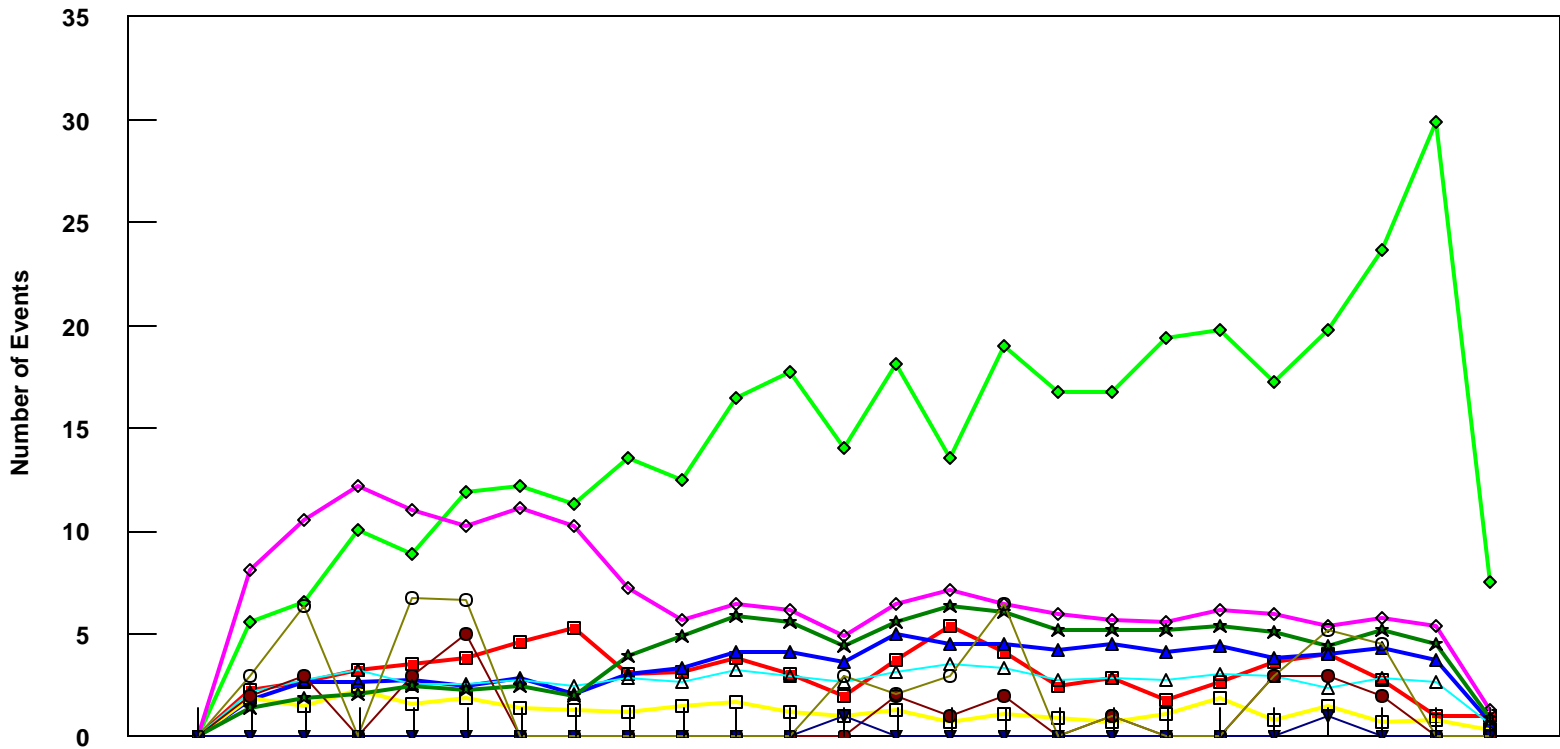


PHX

B757-200 Event Count per Month



	4/05	5/05	6/05	7/05	8/05	9/05	10/05	11/05	12/05	1/06	2/06	3/06	4/06	5/06	6/06	7/06	8/06	9/06	10/06	11/06	12/06	1/07	2/07	3/07	4/07
■ Pirep Items (X10)	0	2.3	2.7	3.3	3.5	3.8	4.6	5.3	3.1	3.2	3.8	3.1	2	3.7	5.4	4.1	2.5	2.9	1.8	2.7	3.6	4	2.8	1	1
◆ Maintenance Items (X10)	0	5.6	6.6	10.1	8.9	11.9	12.2	11.3	13.6	12.8	16.5	17.7	14	18.1	13.6	19	16.8	16.8	19.4	19.8	17.3	19.8	23.7	29.9	7.5
▲ Scheduled Items (X10)	0	1.8	2.7	2.7	2.8	2.5	2.9	2.1	3.1	3.4	4.1	4.1	3.6	5	4.5	4.5	4.2	4.5	4.1	4.4	3.8	4	4.3	3.7	0.7
□ MEL Items (X10)	0	1.9	1.5	2.3	1.6	1.9	1.4	1.3	1.2	1.5	1.7	1.2	1	1.3	0.7	1.1	0.9	0.7	1.1	1.9	0.8	1.5	0.7	0.8	0.3
◇ Deps out of Sta (X10)	0	8.1	10.5	12.2	11	10.3	11.1	10.3	7.2	5.7	6.5	6.2	4.9	6.5	7.1	6.5	6	5.7	5.6	6.2	6	5.4	5.8	5.4	1.3
△ Flt Hrs into Sta (x100)	0	2.2	2.79	3.26	2.53	2.6	2.73	2.45	2.91	2.72	3.3	2.95	2.67	3.18	3.55	3.37	2.73	2.83	2.8	3.09	2.94	2.43	2.9	2.63	0.66
● Delays	0	2	3	0	3	5	0	0	0	0	0	0	0	2	1	2	0	1	0	0	3	3	2	0	0
★ Tot Hrs Grnd Time (x100)	0	1.437	1.894	2.111	2.505	2.237	2.472	2.033	3.925	4.957	5.895	5.594	4.456	5.564	6.416	6.047	5.237	5.196	5.167	5.437	5.115	4.445	5.172	4.553	0.887
▼ Cancellations	0	0	0	0	0	0	0	0	0	0	0	0	1	0	0	0	0	0	0	0	0	1	0	0	0
⊖ Total Delay Cost (x10,000)	0	2.966	6.356	0	6.78	6.636	0	0	0	0	0	0	2.966	2.116	2.966	6.497	0	0.986	0	0	2.966	5.226	4.52	0	0

***Note: Total hours ground time reflect only those legs having greater than 2 hours and less than 10 hours available prior to departure. Delay Costs derived from SPEC 109. Cnx cost ceiling is calculated as equal to 6 hours delay.**