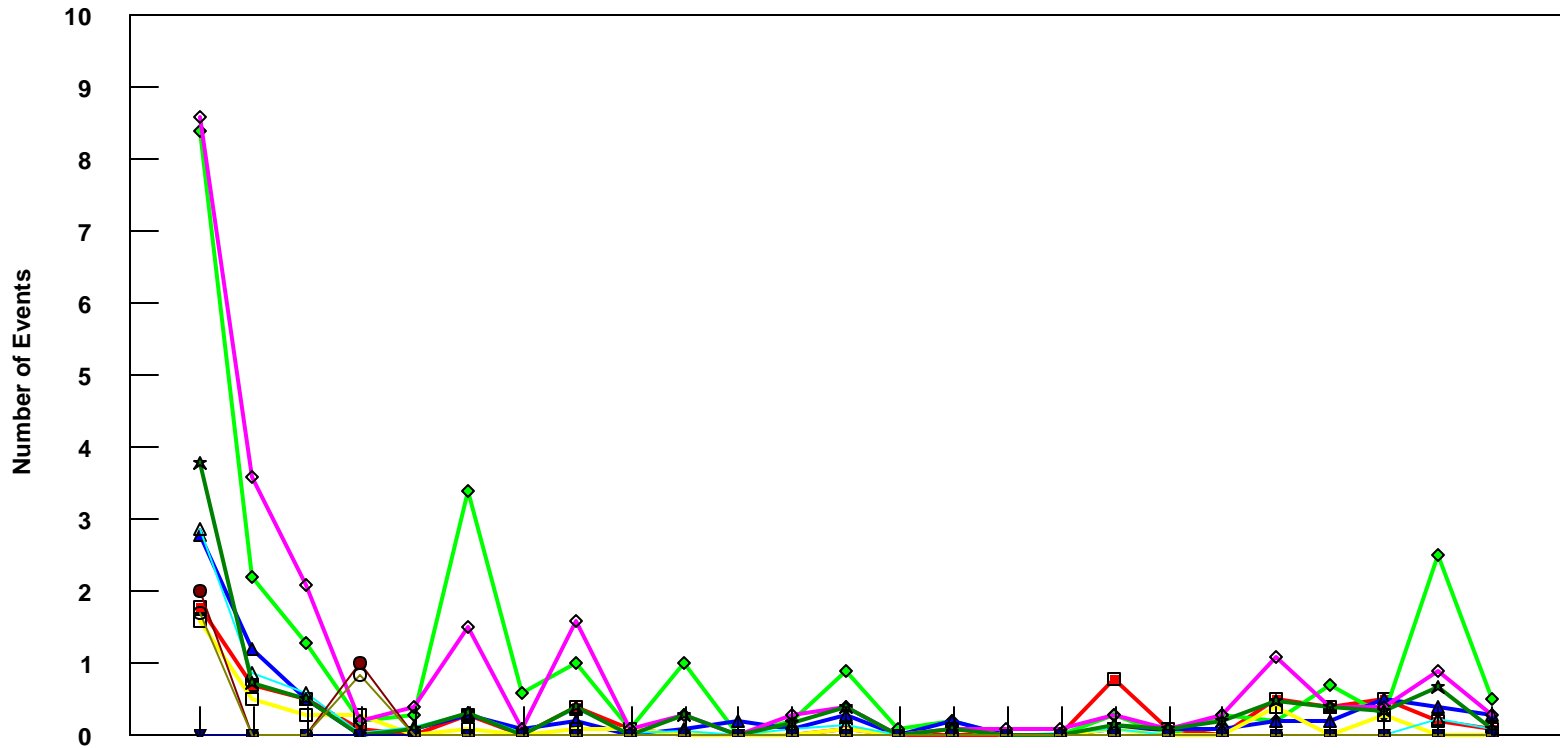


PHX

B757-300 Event Count per Month



	4/05	5/05	6/05	7/05	8/05	9/05	10/05	11/05	12/05	1/06	2/06	3/06	4/06	5/06	6/06	7/06	8/06	9/06	10/06	11/06	12/06	1/07	2/07	3/07	4/07
■ Pirep Items (X10)	1.8	0.7	0.5	0.1	0	0.3	0	0.4	0.1	0	0	0	0.1	0	0	0	0	0.8	0.1	0	0.5	0.4	0.5	0.2	0.1
◆ Maintenance Items (X10)	8.4	2.2	1.3	0.2	0.3	3.4	0.6	1	0.1	1	0	0.2	0.9	0.1	0.2	0	0	0.3	0	0.3	0.2	0.7	0.3	2.5	0.5
▲ Scheduled Items (X10)	2.8	1.2	0.5	0	0.1	0.3	0.1	0.2	0	0.1	0.2	0.1	0.3	0	0.2	0	0	0.1	0.1	0.1	0.2	0.2	0.5	0.4	0.3
□ MEL Items (X10)	1.6	0.5	0.3	0.3	0	0.1	0	0.1	0.1	0	0	0	0.1	0	0.1	0	0	0.1	0	0	0.4	0	0.3	0	0
◇ Deps out of Sta (X10)	8.6	3.6	2.1	0.2	0.4	1.5	0.1	1.6	0.1	0.3	0	0.3	0.4	0	0.1	0.1	0.1	0.3	0.1	0.3	1.1	0.4	0.4	0.9	0.3
▲ Flt Hrs into Sta (x100)	2.88	0.87	0.59	0.05	0.12	0.32	0.05	0.38	0.05	0.06	0	0.11	0.16	0	0	0	0.05	0.09	0	0	0.02	0	0	0.23	0.11
● Delays	2	0	0	1	0	0	0	0	0	0	0	0	0	0	0	0	0	0	0	0	0	0	0	0	0
★ Tot Hrs Grnd Time (x100)	3.80	0.72	0.51	0	0.1	0.30	0	0.41	0.02	0.3	0	0.18	0.4	0	0.1	0	0	0.14	0.1	0.2	0.49	0.4	0.33	0.66	0.10
▼ Cancellations	0	0	0	0	0	0	0	0	0	0	0	0	0	0	0	0	0	0	0	0	0	0	0	0	0
⊖ Total Delay Cost (x10,000)	1.69	0	0	0.84	0	0	0	0	0	0	0	0	0	0	0	0	0	0	0	0	0	0	0	0	0

***Note: Total hours ground time reflect only those legs having greater than 2 hours and less than 10 hours available prior to departure. Delay Costs derived from SPEC 109. Cnx cost ceiling is calculated as equal to 6 hours delay.**