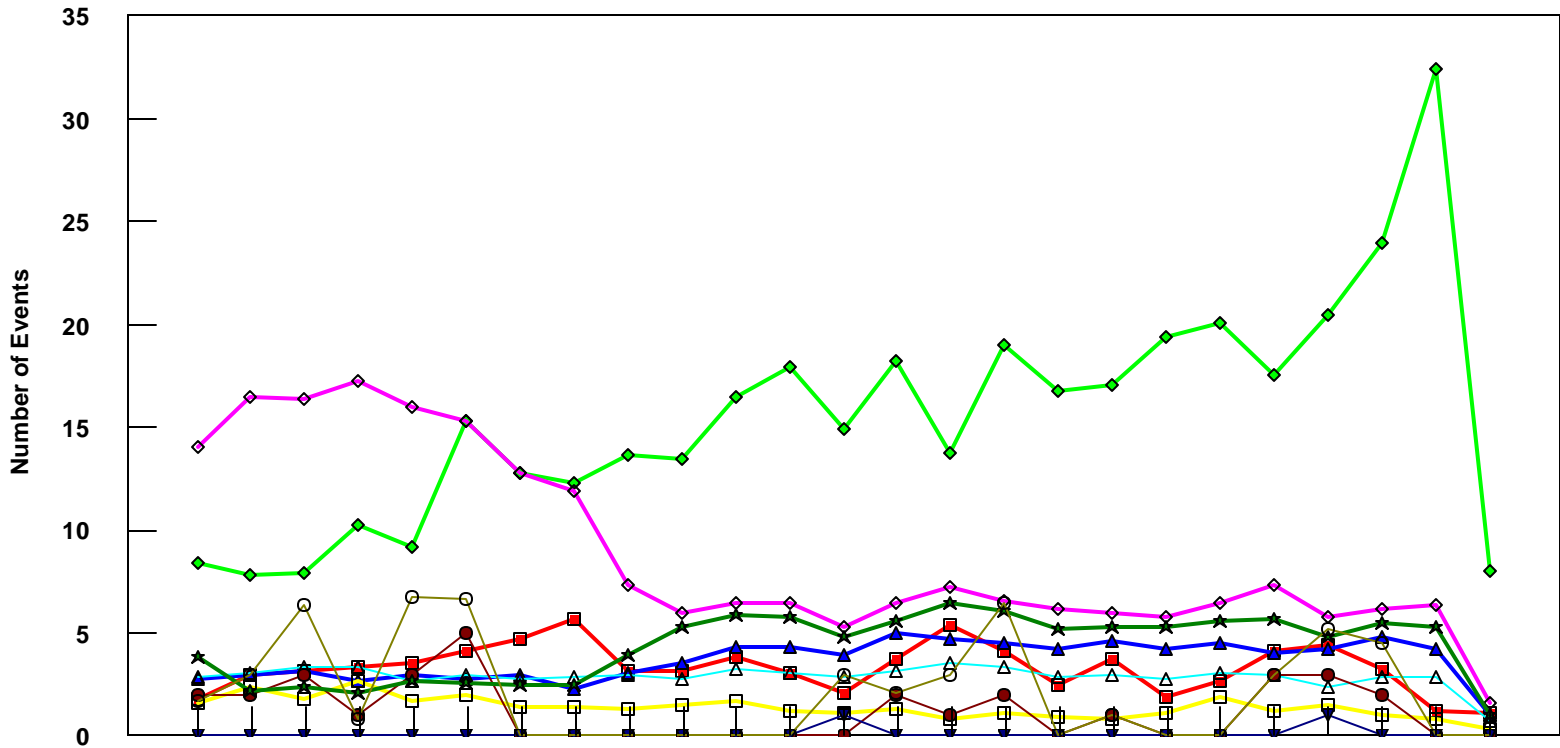


PHX

All Fleet Total - Event Count per Month



	4/05	5/05	6/05	7/05	8/05	9/05	10/05	11/05	12/05	1/06	2/06	3/06	4/06	5/06	6/06	7/06	8/06	9/06	10/06	11/06	12/06	1/07	2/07	3/07	4/07
■ Pirep Items (X10)	1.8	3	3.2	3.4	3.5	4.1	4.7	5.7	3.2	3.2	3.8	3.1	2.1	3.7	5.4	4.1	2.5	3.7	1.9	2.7	4.1	4.4	3.3	1.2	1.1
◆ Maintenance Items (X10)	8.4	7.8	7.9	10.3	9.2	15.3	12.8	12.3	13.7	13.5	16.5	17.9	14.9	18.2	13.8	19	16.8	17.1	19.4	20.1	17.5	20.5	24	32.4	8
▲ Scheduled Items (X10)	2.8	3	3.2	2.7	3	2.8	3	2.3	3.1	3.5	4.3	4.3	3.9	5	4.7	4.5	4.2	4.6	4.2	4.5	4	4.2	4.8	4.2	1
□ MEL Items (X10)	1.6	2.4	1.8	2.7	1.7	2	1.4	1.4	1.3	1.5	1.7	1.2	1.1	1.3	0.8	1.1	0.9	0.8	1.1	1.9	1.2	1.5	1	0.8	0.3
◇ Dps out of Sta (X10)	14	16.5	16.4	17.3	16	15.3	12.8	11.9	7.3	6	6.5	6.5	5.3	6.5	7.2	6.6	6.2	6	5.8	6.5	7.3	5.8	6.2	6.4	1.6
△ Flt Hrs into Sta (x100)	2.88	3.07	3.38	3.31	2.66	2.92	2.78	2.83	2.96	2.78	3.3	3.06	2.83	3.18	3.55	3.37	2.83	2.92	2.81	3.09	2.96	2.43	2.9	2.87	0.77
● Delays	2	2	3	1	3	5	0	0	0	0	0	0	0	2	1	2	0	1	0	0	3	3	2	0	0
★ Tot Hrs Grnd Time (x100)	3.80	2.16	2.40	2.11	2.65	2.54	2.47	2.44	3.95	5.25	5.89	5.78	4.85	5.56	6.51	6.04	5.23	5.33	5.26	5.63	5.65	4.84	5.50	5.32	0.98
▼ Cancellations	0	0	0	0	0	0	0	0	0	0	0	0	1	0	0	0	0	0	0	0	0	1	0	0	0
⊖ Total Delay Cost (x10,000)	1.69	2.96	6.35	0.84	6.78	6.63	0	0	0	0	0	0	2.96	2.11	2.96	6.49	0	0.98	0	0	2.96	5.22	4.52	0	0

*Note: Total hours ground time reflect only those legs having greater than 2 hours and less than 10 hours available prior to departure. Delay Costs derived from SPEC 109. Cnx cost ceiling is calculated as equal to 6 hours delay.