

CHECK BEING PERFORMED: Custom

ZONES: 141 142
 A/C NUMBER:
 REV. DATE: 12/13/01
 FREQUENCY: 2C

W/C NUMBER: 210I2001 DATE:
 W/O:
 JAC CODE:

PANELS

1311 2421
 1312

REFERENCES

Figures 1 and 2, AMM 12-21-31/301, AMM 20-10-03, AMM 27-00-01, AMM
 32-00-05

MECH INSP

VISUALLY INSPECT PROTECTED CONTROL CABLES AT TURNS (AILERON/
 T/E FLAP/LE SLAT CONTROL; L/G EXTENSION/RETRACTION; BRAKES)
 FOR WEAR, BROKEN STRANDS, CORROSION, KINKS, AND BIRD CAGING.
 CHECK END FITTINGS, TURNBUCKLES, PULLEYS, BRACKETS, FAIRLEADS
 AND QUADRANTS FOR WEAR, CORROSION, CRACKS AND SECURITY.

ACCESS NOTE: BETWEEN STA. 1040 TO STA. 1180. REMOVE ONLY CABIN
 EQUIPMENT NECESSARY FOR ACCOMPLISHMENT OF THIS
 TASK CARD.

| 1 Inspection of the Control Cable Wire Ropes. (Fig. 1)

| A References

| 1 AMM 12-21-31/301, Control Cables

| 2 AMM 20-10-03, Control Cables

| 3 AMM 27-00-01, Flight Control Cables

| 4 AMM 32-00-05, Landing Gear Control Cables

B Procedure

_____ XXXXX 1 Clean the cables, if necessary, for the inspection
 (Ref 12-21-31).

XXXXX _____ 2 Examine wire ropes.

| a Perform a detailed visual inspection to make sure that
 | the cable does not contact parts other than pulleys,
 | quadrants, cable seals or grommets installed to
 | control the cable routing. The minimum cable
 | clearance from other parts is 0.20 inches except 0.10
 | inches within 10 inches of a pulley or quadrant. Look
 | for evidence of contact with other parts. Condition
 | must be corrected if evidence of contact is found.

A/C NUMBER:

CHECK BEING PERFORMED: Cust

W/C NUMBER: 210I2001 (continued)

MECH: INSP:

- | b Perform a detailed visual inspection of the cable runs
- | for incorrect routing, kinks in the wire rope, or
- | other damage.

- | 1 Cable assembly must be replaced if:

- | (a) One cable strand has worn wires where one
- | wire cross section is decreased by more than
- | 40 percent. (Refer to Fig. 1)

- | (b) A kink is found.

- | (c) Corrosion is found.

- | 2 Make sure the cable guides and fairleads have no
- | worn or broken parts and that the parts are
- | aligned, clean, and attached correctly.

- | 3 Make sure the deflection angle at each fairlead
- | is not more than 3 degrees.

- | 4 Make sure the cable moves freely through its
- | full travel.

- | c Perform a detailed visual inspection of the cable.
- | To do a check for broken wires, rub a cloth along the
- | cable. The cloth will identify broken wires by
- | catching on them.

- | 1 7 x 7 cable assembly must be replaced if:

- | (a) There is two or more broken wires in 12
- | continuous inches of cable.

- | (b) There is three or more broken wires anywhere
- | in the total cable assembly.

- | 2 7 X 19 cable assembly must be replaced if:

- | (a) There is four or more broken wires in 12
- | continuous inches of cable.

- | (b) There is six or more broken wires anywhere
- | in the total cable assembly.

A/C NUMBER:

CHECK BEING PERFORMED: Cust

W/C NUMBER: 210I2001 (continued)

MECH: INSP:

| NOTE: A broken wire must not go over a pulley or
| through a pressure seal or fairlead.

| _____ XXXXX 3 Lubricate cables where lubricant is removed.
| (Ref 12-21-31)

NOTE: Do not apply grease to CRES cables. CRES cables
should not be lubricated.

| Reference AMM 27-00-01 to determine Flight Control
| Cable material used.

| Reference AMM 32-00-05 to determine Landing Gear
| Control Cable material used.

| Reference AMM 20-10-03 figure 401 for General
| cable material information.

| 2 Inspection of the control cable fittings.

| XXXX _____ A Examine the control cable fittings.

| 1 Perform a detailed visual inspection to make sure that
| the means of locking the joints are intact, (wire locking,
| cotter pins, turnbuckle clips, etc.).

| a Missing parts must be replaced.

| 2 Perform a detailed visual inspection of the swaged
| portions of swaged end fittings for surface cracks or
| corrosion.

| a Cable assembly must be replaced if:

| 1 A crack is visible.

| 2 Corrosion is present.

| 3 Perform a detailed visual inspection of the unswaged
| portion of the end-fitting.

| a Cable assembly must be replaced if:

| 1 A crack is visible.

A/C NUMBER:

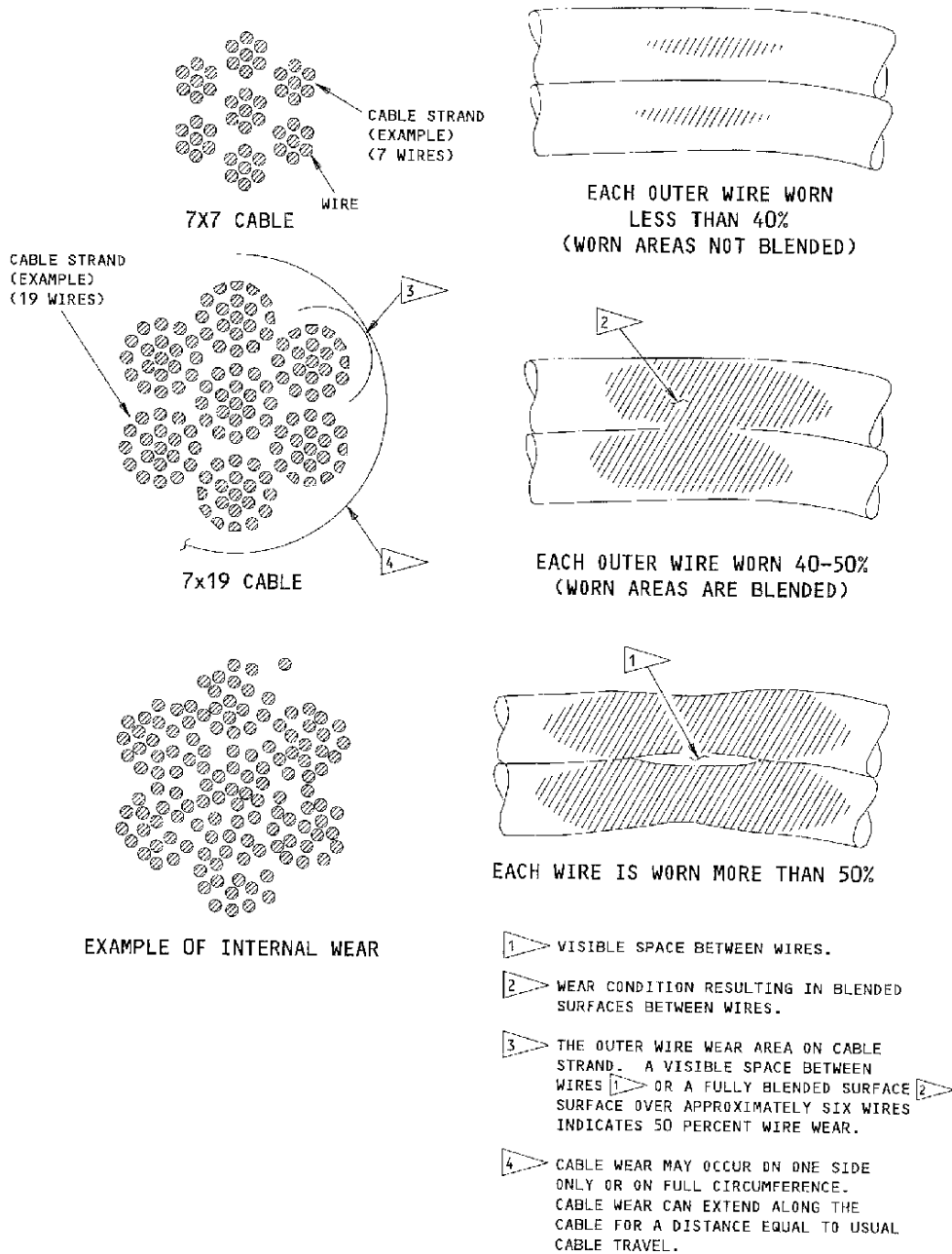
CHECK BEING PERFORMED: Cust

W/C NUMBER: 210I2001 (continued)

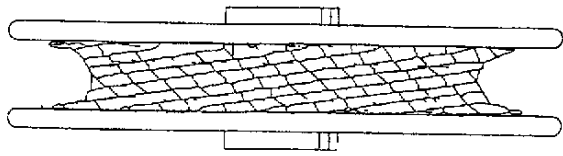
MECH: INSP:

- | 2 Corrosion is present.
- | 3 End fitting is bent more than two degrees.
- | 4 Perform a detailed visual inspection of the turnbuckle.
 - | a Turnbuckle must be replaced if:
 - | 1 A crack is visible.
 - | 2 Corrosion is present.
 - | 3 Inspection of the Control Cable Pulleys. (Fig. 2)
 - | XXXX _____ A Perform a detailed visual inspection to make sure that pulleys are free to rotate.
 - | 1 Pulley must be replaced if:
 - | a Pulley does not rotate freely.
 - | b Pulley matches the description in Figure 2.
 - | 4 Inspection of the Control Cable Pulley Brackets.
 - | XXXXX _____ A Examine the brackets and the support structure for cracks or other damage.
 - | 1 Brackets or structure that have damage must be repaired or replaced.

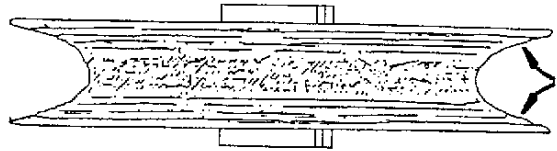
*****END OF WORKCARD*****



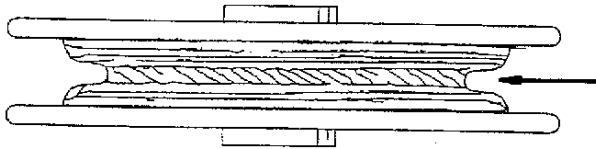
Cable Wear Patterns



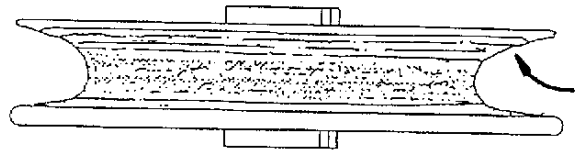
CABLE TENSION TOO HIGH



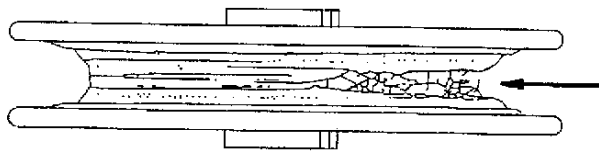
PULLEY NOT ALIGNED CORRECTLY



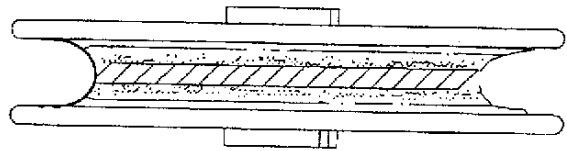
PULLEY GROOVE WITH EXCESSIVE WEAR



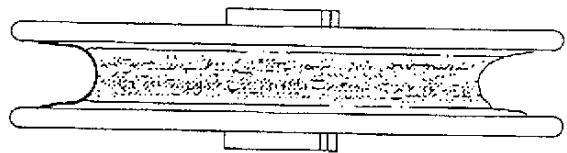
CABLE NOT ALIGNED CORRECTLY



PULLEY WILL NOT TURN



OR



NORMAL CONDITION

Pulley Wear Patterns