

ATA AIRLINES, INC.

AFT CARGO HEATER

PAGE 1 / 5

CHECK BEING PERFORMED: Custom

ZONES: 152  
A/C NUMBER:  
REV. DATE: 10/04/04  
FREQUENCY: 6A

W/C NUMBER: 212M2101 DATE:  
W/O:  
JAC CODE:

MFR P/N	DESCRIPTION	QTY
CCN - 9200305	ISOPROPYL ALCOHOL VACUUM	A/R 1

PANELS

1511  
822

REFERENCES

1, AMM 06-46-00-2, 24-22-00-2, 25-50-03-4, 25-53-01-4

MECH INSP

VISUALLY CHECK THE AFT CARGO HEATER FOR CONDITION AND BLOCKAGE  
(CLEAN AS REQUIRED).

MPD ITEM: 21-44-05-2A

1. REMOVE AFT CARGO HEATER.

A. References.

- (1) AMM 06-46-00-2, Entry, Service, and Cargo Doors, Access Doors and Panels.
- (2) AMM 24-22-00-2, Electrical Power Control.
- (3) AMM 25-50-03-4, Bulkhead Lining.
- (4) AMM 25-53-01-4, Cargo Loading System Moveable Bulkhead.

WARNING: BE VERY CAREFUL WHEN YOU REMOVE THE HEATER.  
IF THE HEATER HOUSING IS HOT, IT CAN BURN YOU.

B. Procedure (Fig. 1).

- XXXXX (1) Open these circuit breakers on the overhead circuit breaker panel, P11, and attach DO-NOT-CLOSE tags:
  - (a) 11N18, CARGO HEAT AFT.
  - (b) 11N22, CARGO FAN AFT.
- XXXXX (2) Open this circuit breaker on the miscellaneous

AFT CARGO HEATER

A/C NUMBER:

CHECK BEING PERFORMED: Cust

W/C NUMBER: 212M2101 (continued)

MECH: INSP:

electrical equipment panel, P70, and attach a DO-NOT-CLOSE tag:

(a) 70C8, AFT CARGO HTR.

|\_\_\_\_\_ XXXXX (3) Open the No. 2 Cargo Door (822) (AMM 06-46-00-2).

|\_\_\_\_\_ XXXXX (4) Remove the AFT cargo compartment Movable Bulkhead for the cargo loading system (AMM 25-53-01-4).

| NOTE: N/A step (4) if not applicable to aircraft.

|\_\_\_\_\_ XXXXX (5) Remove the FWD left bulkhead lining to get access to the cargo heater (AMM 25-50-03-4).

|\_\_\_\_\_ XXXXX (6) Remove the electrical connector (10) from the heater (7).

|\_\_\_\_\_ XXXXX (7) Disconnect the bonding jumper from the heater (7).

|\_\_\_\_\_ XXXXX (8) Remove the clamps (2 and 11) in three locations.

|\_\_\_\_\_ XXXXX (9) Move the hose (12) away from the heater (7) on the left side of heater.

|\_\_\_\_\_ XXXXX (10) Disconnect the duct support clamps (3) from the heater (7).

|\_\_\_\_\_ XXXXX (11) Remove the aft cargo heater (7).

2. INSPECT THE AFT CARGO HEATER.

A. Procedure

\_\_\_\_\_ XXXXX (1) Visually examine the aft cargo heater for dust, dirt, debris and grease.

\_\_\_\_\_ XXXXX (2) Visually examine the exchanger fins for dirt and debris.

3. CLEAN THE AFT CARGO HEATER.

A. Consumable Materials.

ISOPROPYL ALCOHOL, CCN - 9200305

B. Equipment.

- (1) Vacuum - Commercially available

C. Procedure.

- \_\_\_\_\_ XXXXX (1) Remove dust, lint and debris with compressed air.

CAUTION: DO NOT PUT THE HEATER INTO THE ISOPROPYL ALCOHOL. DO NOT USE WATER-BASE SOLVENTS TO CLEAN THE HEATER. DAMAGE TO THE ELECTRICAL HEATING ELEMENT CAN OCCUR.

- \_\_\_\_\_ XXXXX (2) To remove film, apply alcohol with a spray container.

- \_\_\_\_\_ XXXXX (3) Let the air dry the aft cargo heater.

- \_\_\_\_\_ XXXXX (4) Clean the aft cargo heating inlet grill as follows:

NOTE: If grill is damaged, go to step (5).

- a) Remove the inlet grill.
- b) Vacuum the front and back side of the grill to remove all of the dirt and debris.
- c) Install the inlet grill.
- d) Seal the grill with fiberglass tape to ensure air flowing into the heating intake duct passes through the wire filter behind the grill.

- \_\_\_\_\_ XXXXX (5) If grill is damaged, MEL the aft cargo heater and record in MEL discrepancy that the inlet grill needs to be replaced.

4. INSTALL THE AFT CARGO HEATER (Fig. 1).

A. Equipment.

(1) Cooling source - ice pack, commercially available.

B. Parts.

MM	FIG	ITEM	NOMENCLATURE	SUBJECT	IPC	FIG	ITEM
	201	1	Clamp	21-44-05	01		105
		2	Clamp				100
		3	Duct Support Clamp				148
		7	Heater				145
		8	Nut				45
		9	Washer				35
		11	Clamp				110
		12	Hose				115

C. Procedure.

- \_\_\_\_\_ XXXXX (1) Align the aft cargo heater (7) with the aft cargo heating duct.
- \_\_\_\_\_ XXXXX (2) Connect the duct support clamps (3) in two locations. Do not tighten.
- \_\_\_\_\_ XXXXX (3) Install the clamp (2) between the duct and the heater on the right side.
- \_\_\_\_\_ XXXXX (4) Install the hose (12) at the left intersection of the heater (7) and duct and install clamps (11) in two locations.
- \_\_\_\_\_ XXXXX (5) Tighten all clamps (2, 3, 11).
- \_\_\_\_\_ XXXXX (6) Connect the bonding jumper to the cargo heater (7).
- \_\_\_\_\_ XXXXX (7) Install the electrical connector (10).
- |\_\_\_\_\_ XXXXX (8) Remove the DO-NOT-CLOSE tag and close these circuit breakers on the overhead circuit breaker panel, P11:
  - (a) 11N18, CARGO HEAT AFT.
  - (b) 11N22, CARGO HEAT FAN AFT.

AFT CARGO HEATER

A/C NUMBER:

CHECK BEING PERFORMED: Cust

W/C NUMBER: 212M2101 (continued)

MECH: INSP:

|\_\_\_\_ XXXXX (9) Remove the DO-NOT-CLOSE tag and close this circuit breaker on the P70 panel:

(a) 70C8, AFT CARGO HTR.

|\_\_\_\_ XXXXX (10) Supply electrical power (AMM 24-22-00-2).

NOTE: The fan operates automatically. A signal from the forward thermal temperature sensor switch controls the fan.

|\_\_\_\_ XXXXX (11) Make sure the cargo heating flow fan operates.

(a) If the fan does not operate, apply the cooling source to the cargo compartment thermal temperature switch until the fan starts.

|\_\_\_\_ XXXXX (12) While the fan operates, make sure the air that comes from the heater outlets is warm.

|\_\_\_\_ XXXXX (13) Install the bulkhead lining (AMM 25-50-03-4).

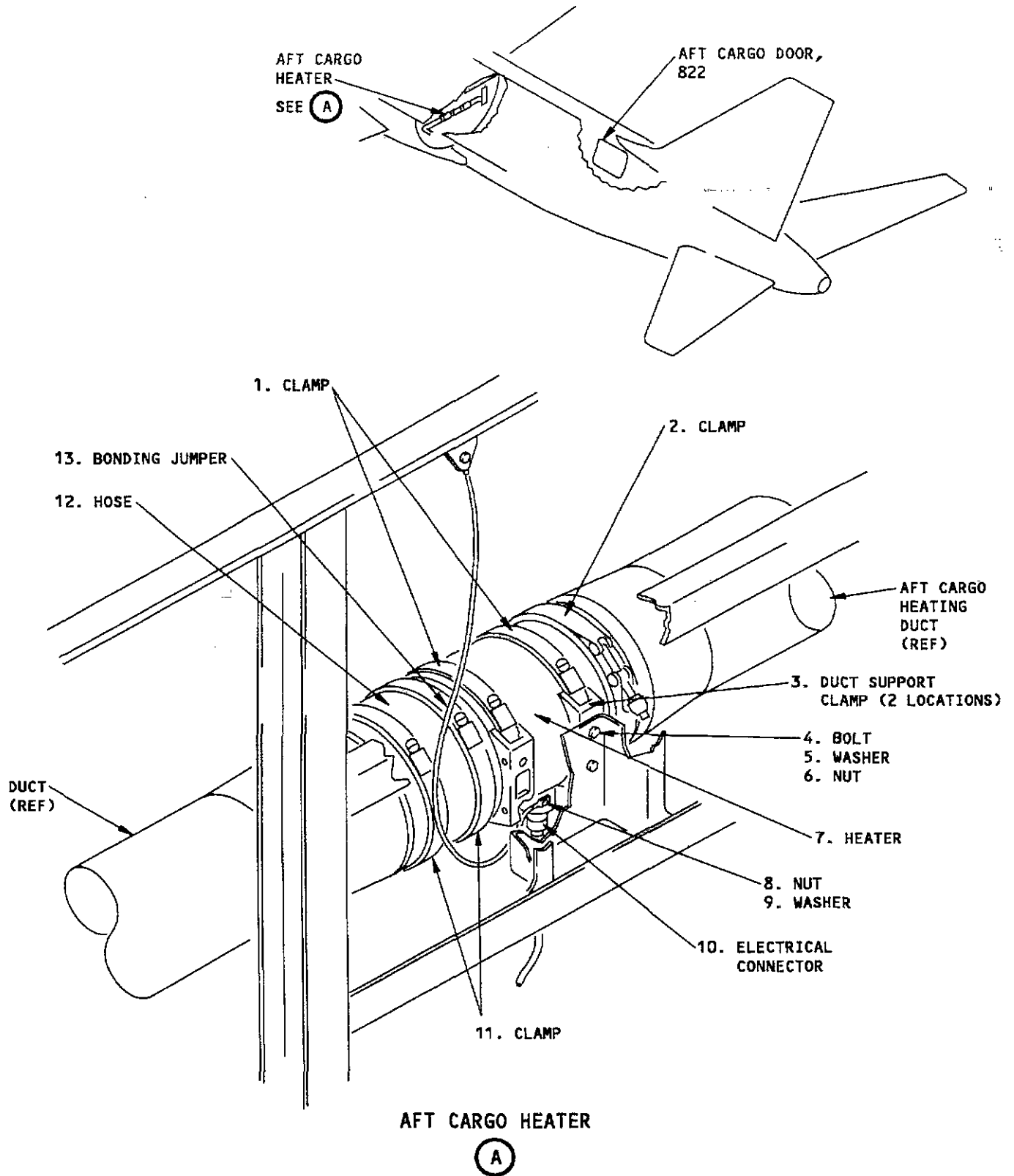
|\_\_\_\_ XXXXX (14) Install the AFT cargo compartment Moveable Bulkhead for the cargo loading system (AMM 25-53-01-4).

NOTE: N/A step (14) if not applicable to aircraft.

|\_\_\_\_ XXXXX (15) Close the No. 2 Cargo Door (822) (AMM 06-46-00-2).

|\_\_\_\_ XXXXX (16) Remove electrical power, if it is not necessary.

\*\*\*\*\*END OF WORKCARD\*\*\*\*\*



AFT CARGO HEATER

FIGURE 1

08/06/1998