

# ATA AIRLINES, INC.

FQIS BITE CHECK {PRE-DOCK}

PAGE 1 / 2

CHECK BEING PERFORMED: Custom

ZONES: 119  
A/C NUMBER:  
REV. DATE: 07/02/96  
FREQUENCY: 1C

W/C NUMBER: 214F2801      DATE:  
W/O:  
JAC CODE:

## PANELS

119BL

## REFERENCES

FIG 1-3

MECH      INSP

---

FQIS SYSTEM BITE CHECK

PLANNING NOTE: SCHEDULE THIS CARD PRIOR TO AIRCRAFT DOCKING

A PERFORM THE FOLLOWING FQIS BITE CHECK (REF FIG 1)

\_\_\_\_\_ XXXXX      1 ACCESS THE MEC THROUGH DOOR 119BL AND LOCATE THE FQIS  
PROCESSOR UNIT ON THE E3-4 SHELF.

\_\_\_\_\_ XXXXX      2 PUSH AND RELEASE THE "ON/OFF" BUTTON TO PUT THE PROCESSOR  
BITE DISPLAY TO ON (FIG 2).

NOTE: MAKE SURE THE PROCESSOR BITE DISPLAY IS ON. IF THE  
PROCESSOR BITE DISPLAY IS NOT ON AFTER YOU PUSH THE  
"ON/OFF" BUTTON MORE THAN ONCE, MAKE SURE POWER IS  
SUPPLIED TO THE PROCESSOR, REFERENCE WDM 28-21-11.

\_\_\_\_\_ XXXXX      3 "PRESENT\_FAULTS\_?" WILL SHOW ON THE FQIS PROCESSOR DISPLAY.  
PUSH AND RELEASE THE THE "YES" BUTTON TO SEE THE PRESENT  
FAULTS MENU, OR CONTINUE TO PUSH THE "NO" BUTTON TO SEE THE  
NEXT MENU ALTERNATIVES.

\_\_\_\_\_ XXXXX      4 CHECK THE "PRESENT\_FAULTS\_" STATUS

A PUSH AND RELEASE THE THE "YES" BUTTON TO GO THE PRESENT  
FAULT DATA.

B MAKE A WRITTEN RECORD OF ALL THE FAULT MESSAGE SHOWN.

C CONTINUE TO PUSH AND RELEASE THE "DOWN" BUTTON TO SEE ALL  
THE FAULT MESSAGES.

NOTE: PUSH AND RELEASE THE "UP" BUTTON TO SEE PREVIOUS  
FAULT MESSAGES.

D WHEN THE "END\_OF\_PRESENT\_FAULTS" MESSAGE SHOWS, ALL FAULT

---

REVISION DATE: 07/02/96

ATA AIRLINES, INC. B757 FLEET

W/C #: 214F2801

DATE WORK CARD COMPLETE \_\_\_/\_\_\_/\_\_\_

A/C NUMBER:

CHECK BEING PERFORMED: Cust

W/C NUMBER: 214F2801 (continued)

MECH: INSP:

MESSAGES ARE SHOWN. PUSH AND RELEASE THE MENU BUTTON.

NOTE: THIS PUTS YOU AT THE TOP OF THE "PRESENT\_FAULTS\_?" MENU.

B PERFORM THE FOLLOWING FQIS FAULT HISTORY (REF FIG 3)

XXXXX 1 MAKE SURE THE PROCESSOR BITE DISPLAY IS ON AND "FAULT\_HISTORY\_?" SHOWS ON THE MENU DISPLAY.

XXXXX 2 PUSH AND RELEASE THE "YES" BUTTON TO GO TO THE "FAULT\_HISTORY\_LEG\_##\_?" DISPLAY.

NOTE: THE "##" PLACE HOLDER WILL SHOW THE FLIGHT LEG NUMBER FOR THE FLIGHT LEG WITH THE RECORDED FAULTS.

XXXXX 3 PUSH AND RELEASE THE "YES" BUTTON TO SEE THE FAULT MESSAGES, OR PUSH AND RELEASE THE "NO" BUTTON TO SEE THE NEXT "FLIGHT LEG" WITH FAULT MESSAGES.

NOTE: ONLY FLIGHT LEGS WITH RECORDED FAULTS WILL BE SHOWN.

XXXXX 4 MAKE A WRITTEN RECORD OF THE FAULT MESSAGE SHOWN.

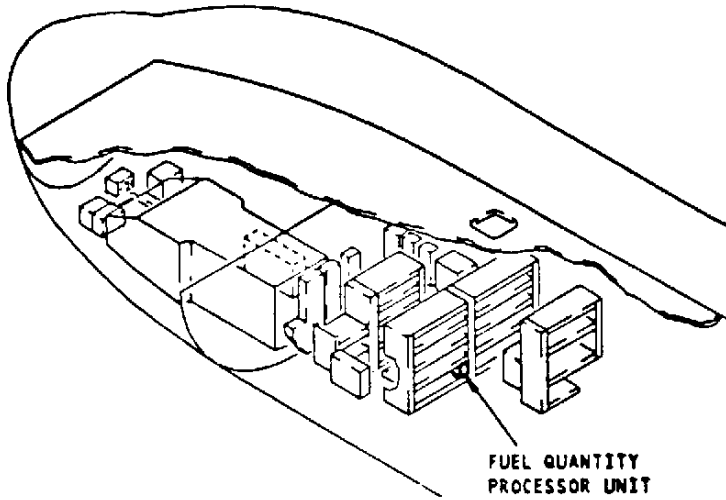
XXXXX 5 CONTINUE TO PUSH AND RELEASE THE "DOWN" BUTTON TO SEE ALL THE FAULT MESSAGES.

XXXXX 6 WHEN "END\_OF\_HISTORY\_FLIGHT\_LEG ##" SHOWS, PUSH AND RELEASE THE "DOWN" BUTTON TO SEE THE NEXT FLIGHT LEG'S FAULT MESSAGES.

XXXXX 7 WHEN THE "END\_OF\_FAULT\_HISTORY" MESSAGE SHOWS, PUSH AND RELEASE THE THE "MENU" BUTTON.

NOTE: THIS PUTS YOU AT THE TOP OF THE "FAULT\_HISTORY\_?" MENU.

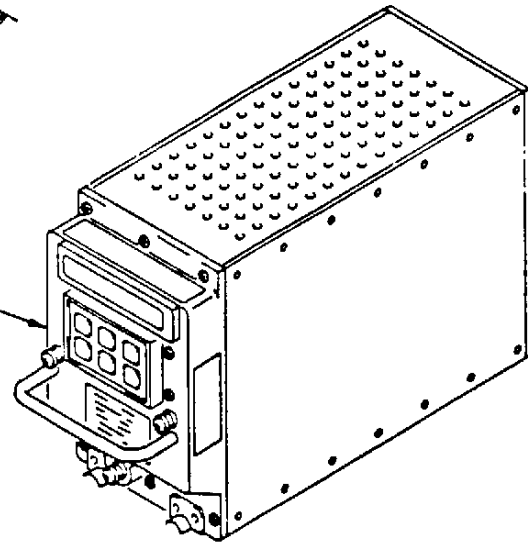
\*\*\*\*\*END OF WORKCARD\*\*\*\*\*



FUEL QUANTITY  
PROCESSOR UNIT  
(E3-4)

SEE (A)

MAIN EQUIPMENT CENTER

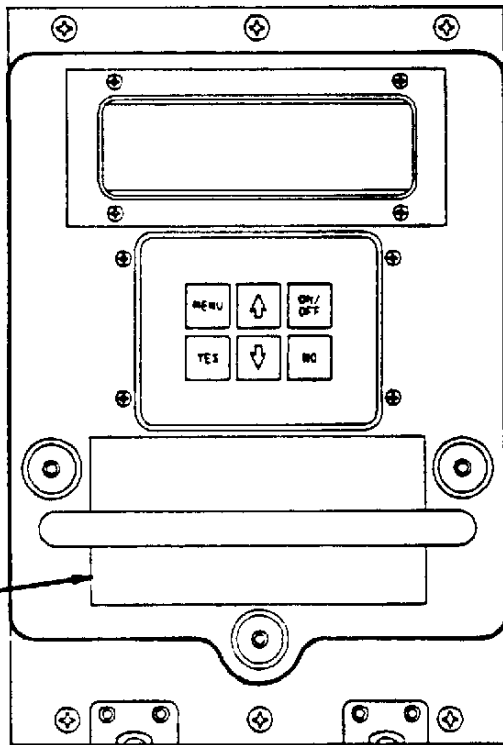


FRONT PANEL

SEE (B)

FUEL QUANTITY PROCESSOR UNIT

(A)



SEE (C)

FRONT PANEL

(B)

**INSTRUCTIONS:**

- Press ON to start BITE display
- Press YES or NO in response to questions (Y)
- Press  $\uparrow$  to display next result
- Press  $\downarrow$  to display previous result
- Press MENU to return to current menu
- Press OFF to stop BITE display

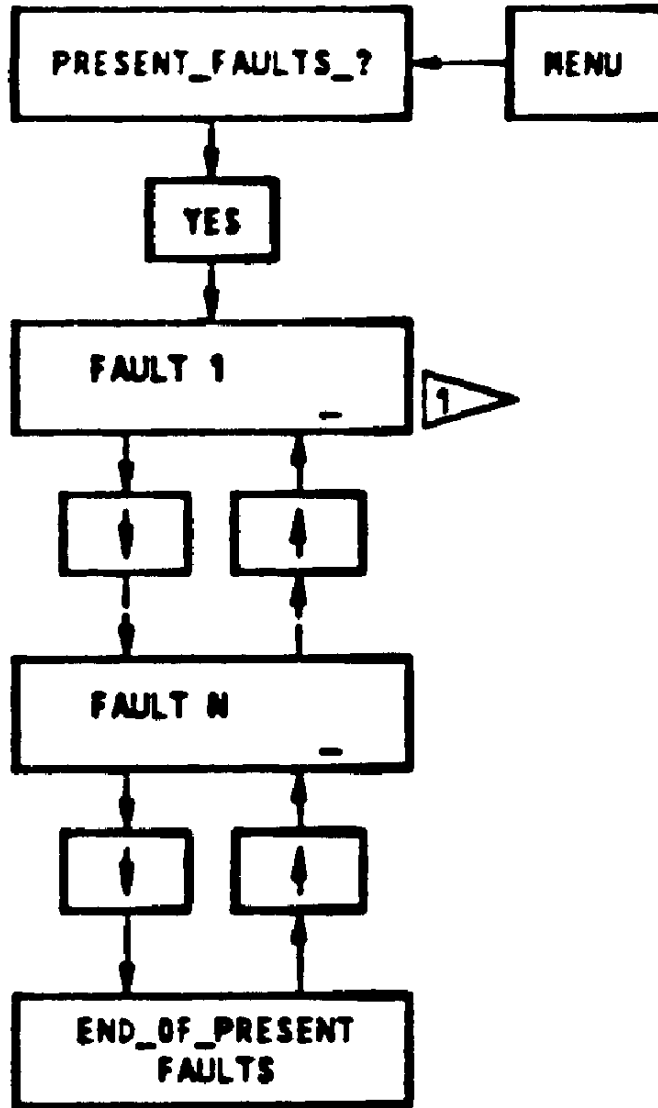
**PRIMARY BITE MENU OPTIONS:**

- FAULT HISTORY: Displays past faults by flight log
- SYSTEM DATA: Displays system/LRU data
- SELF TEST: Tests system/LRU interfaces
- SYSTEM CONFIG: Displays system configuration
- ERASE FAULT HISTORY:

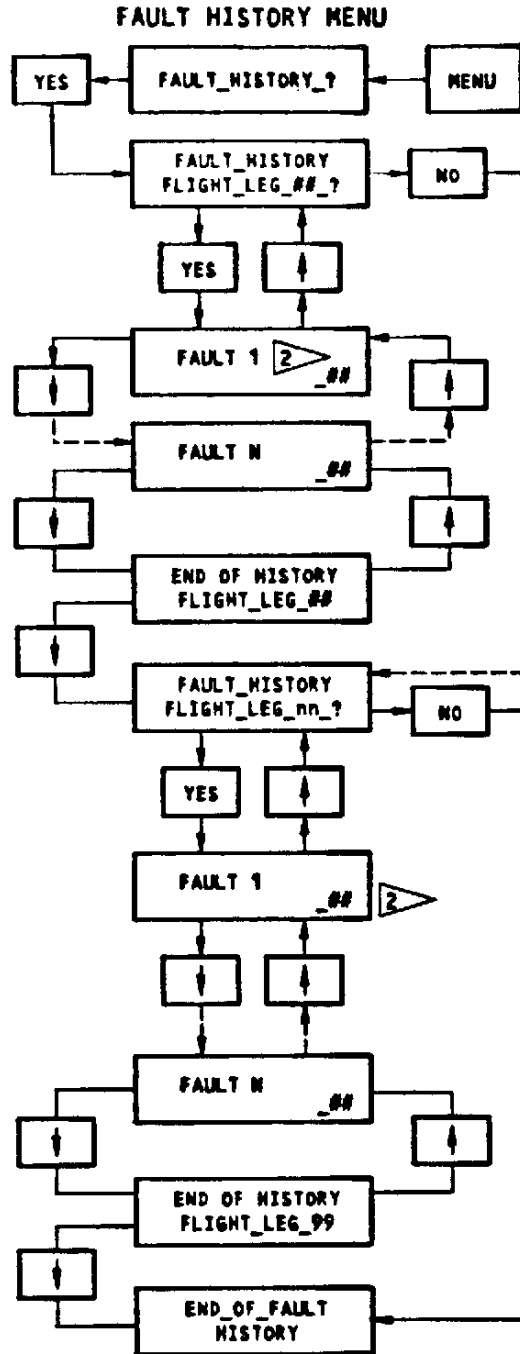
(C)

Fuel Quantity Processor Unit (FQPU)

PRESENT FAULT MENU



1 " - " THIS INDICATION SHOWS "A" OR "G" TO INDICATE THAT THE FAULT FIRST OCCURRED IN THE AIR OR GROUND MODE.



2 " " THIS INDICATION SHOWS "A" OR "G" TO SHOW THAT THE FAULT FIRST OCCURRED IN THE AIR OR ON THE GROUND MODE. THE "##" INDICATION WILL SHOW THE NUMBER OF TIMES THE FAULT OCCURRED IN THE APPLICABLE FLIGHT LEG.

**Fuel Quantity BITE Procedure**