

ATA AIRLINES, INC.

KEEL BEAM AND ECS BAYS

PAGE 1 / 1

CHECK BEING PERFORMED: Custom

ZONES: 135 136 139
A/C NUMBER:
REV. DATE: 05/29/96
FREQUENCY: 2C

W/C NUMBER: 215I5303 DATE:
W/O:
JAC CODE:

PANELS

139AL 139CL
139BL

REFERENCES

FIG 1-2

MECH INSP

KEEL BEAM AND ECS BAY INTERNAL INSPECTIONS

NOTE: WORK THIS CARD IN CONJUNCTION WITH 217I5301.

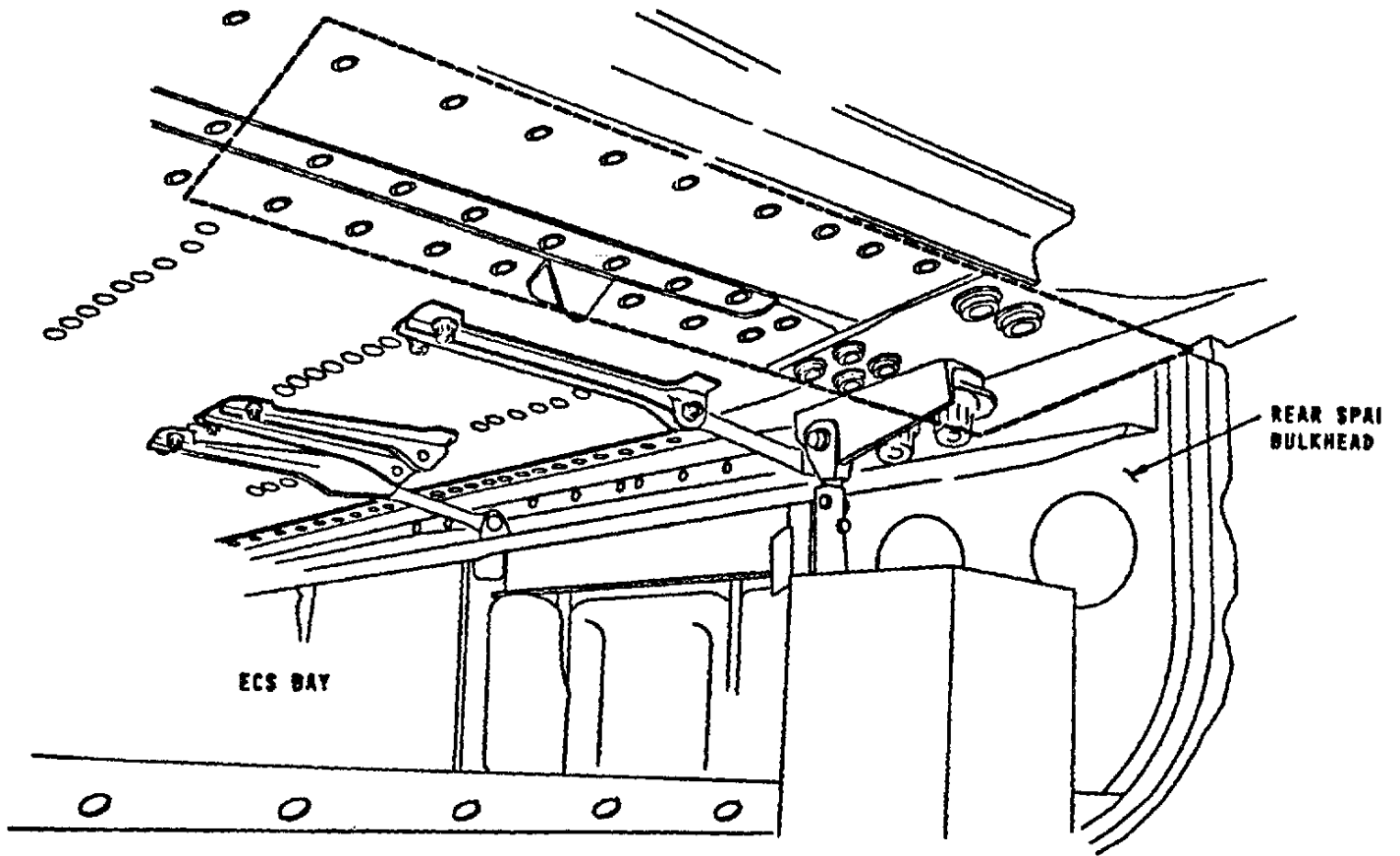
A PERFORM THE FOLLOWING INSPECTIONS

XXXXX _____ 1 PERFORM A DETAILED INTERNAL INSPECTION OF BS 900 BULKHEAD AND SPLICES.

XXXXX _____ 2 PERFORM A DETAILED EXTERNAL INSPECTION OF THE WING LOWER SKIN AT ATTACHMENTS TO SPANWISE SPLICES, STRINGERS, CHORDS AND BODY LONGERON IN ECS BAYS.

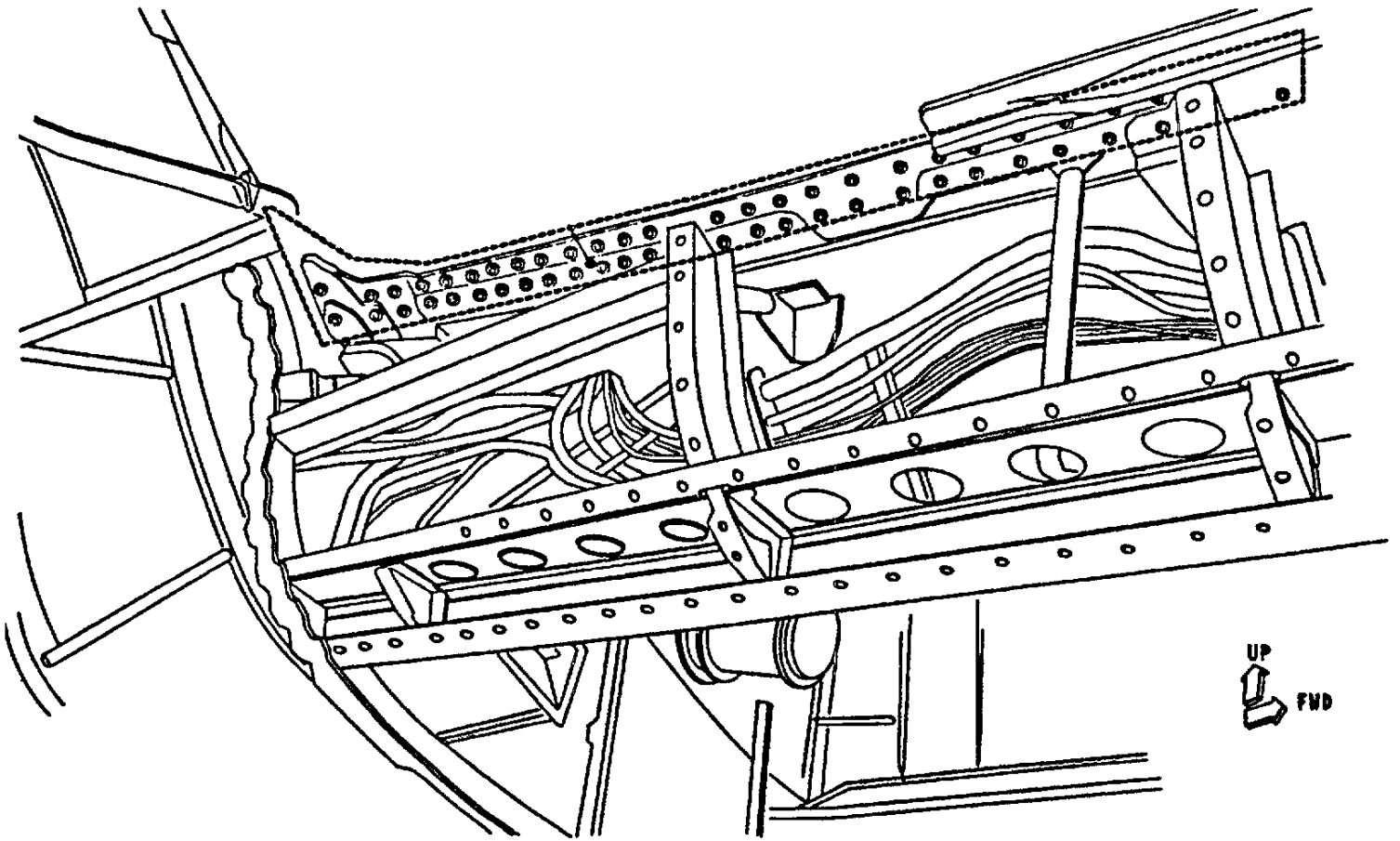
*****END OF WORKCARD*****

215I5303



SIDE OF BODY SPLICE AT REAR SPAR BULKHEAD

21515303



SIDE OF BODY SPLICE UNDER WING (FWD)