

ATA AIRLINES, INC.

RAT CHECKOUT MODULE CASE DRAIN FILTER

PAGE 1 / 6

CHECK BEING PERFORMED: Custom

ZONES: 144
A/C NUMBER:
REV. DATE: 10/03/01
FREQUENCY: 2C

W/C NUMBER: 218R2901 **DATE:**
W/O:
JAC CODE:

MFR P/N	DESCRIPTION	QTY
D00054	HYDRAULIC SYSTEM LUBRICANT	A/R
NAS1612-16	PACKING (CASE DRAIN FILTER CAP)	1
11-10106	CASE DRAIN FILTER ELEMENT	1
NAS1611-012	CASE DRAIN FILTER PACKING	1
MS27595-012	CASE DRAIN FILTER PACKING RETAINER (2 TOTAL)	A/R
NAS1612-20	PACKING (PRESSURE FILTER CAP)	1
11-10107	PRESSURE FILTER ELEMENT	1
NAS1611-116	PRESSURE FILTER PACKING	1
MS27595-116	PRESSURE FILTER PACKING RETAINER (2 TOTAL)	A/R

TOOLS	DESCRIPTION	QTY
BLS-34533	ASSEMBLY BULLETT (part of TIC451 kit)	1
BLS-34529	ASSEMBLY BULLETT (part of TIC451 kit)	1
DAS34534	SIZING DIE (part of TIC451 kit)	1
DAS34530	SIZING DIE (part of TIC451 kit)	1

PANELS
742

REFERENCES

FIGURES 1 AND 2, AMM 29-11-00, 29-21-00, 29-21-01, 32-00-15, 32-00-20

MECH INSP

INSPECT THE RAT CHECKOUT MODULE CASE DRAIN AND PRESSURE FILTERS.

NOTE: STORES TO ROUTE FILTER FOR ULTRA-SONIC CLEANING.

1 Remove the Filter Elements for the Ram Air Turbine (RAT)

A References

- 1 29-11-00/201, Main (Left, Right, and Center) Hydraulic Systems
- 2 32-00-15/201, Main Gear Door Locks
- 3 32-00-20/201, Landing Gear Downlocks

XXXXX B Prepare for Removal

REVISION DATE: 10/03/01

ATA AIRLINES, INC. B757 FLEET

W/C #: 218R2901

DATE WORK CARD COMPLETE ___/___/___

A/C NUMBER:

CHECK BEING PERFORMED: Cust

W/C NUMBER: 218R2901 (continued)

MECH: INSP:

- 1 Make sure the downlocks are installed on the nose and main landing gear (Ref 32-00-20).

WARNING: DO THE PROCEDURE IN 32-00-15 TO INSTALL THE DOOR LOCKS. THE DOORS OPEN AND CLOSE QUICKLY AND CAN CAUSE INJURY TO PERSONS OR DAMAGE TO EQUIPMENT.

- 2 Open the doors for the landing gear and install the door locks (Ref 32-00-15).

- 3 Remove the pressure from the center hydraulic system and the reservoir (Ref 29-11-00).

- | 4 Fill out and place a TAG-OUT form M-142 on the Hydraulic Control Panel (P5).

- | C Remove the Case Drain Filter Element and check Element condition (Fig. 1)

- _____ XXXXX 1 Remove the filter cap from the checkout module.

- _____ XXXXX 2 Remove the filter element from the checkout module.

- |_____ XXXXX 3 Do a check of the condition of the filter element.
 - a Examine the filter element for bright metal particles that you can identify as broken pieces which are very small flakes or slivers caused by usual wear.
 - b If you find a large quantity of bright metal particles, generate a nonroutine to replace the hydraulic pump of the ram air turbine (Ref 29-21-01).
 - c Examine the filter element for pieces of the filter screen from the orifice plug in the checkout module.
 - d If you find pieces of the filter screen, generate a nonroutine to replace the checkout module.

- |_____ XXXXX 4 Route filter element to stores to send out for AMM 29-21-11 ultrasonic cleaning.

- | D Remove the Pressure Filter Element and check the Element

A/C NUMBER:

CHECK BEING PERFORMED: Cust

W/C NUMBER: 218R2901 (continued)

MECH: INSP:

condition (Fig. 1)

- |____ XXXXX 1 Remove the filter cap from the checkout module.
- |____ XXXXX 2 Remove the filter element from the checkout module.
- |____ XXXXX 3 Do a check of the condition of the filter element.
 - a Examine the filter element for bright metal particles that you can identify as broken pieces which are very small flakes or slivers caused by usual wear.
 - b If you find a large quantity of bright metal particles, generate a nonroutine to replace the hydraulic pump of the ram air turbine (Ref 29-21-01).
 - c Examine the filter element for pieces of the filter screen from the orifice plug in the checkout module.
 - d If you find pieces of the filter screen, generate a nonroutine to replace the checkout module.
- |____ XXXXX 4 Route filter element to stores to send out for AMM 29-21-11 ultrasonic cleaning.

2 Install the Filter Elements for the Ram Air Turbine (RAT)

A Equipment

- | 1 Assembly Bullet, BLS-34533, Sundstrand Corp., 4747 Harrison Ave., Rockford, Illinois
- | 2 Assembly Bullet, BLS-34529, Sundstrand Corp., 4747 Harrison Ave., Rockford, Illinois
- | 3 Sizing Die, DAS 34534, Sundstrand Corp., 4747 Harrison Ave., Rockford, Illinois
- | 4 Sizing Die, DAS 34530, Sundstrand Corp., 4747 Harrison Ave., Rockford, Illinois

B Consumable Materials

A/C NUMBER:

CHECK BEING PERFORMED: Cust

W/C NUMBER: 218R2901 (continued)

MECH: INSP:

1 D00054 Hydraulic System Lubricant - MCS 352

C References

1 29-11-00/201, Main (Left, Right, and Center) Hydraulic Systems

2 29-21-00/501, Ram Air Turbine (RAT) System

3 29-21-01/401, Ram Air Turbine (RAT) Assembly and Components

4 32-00-15/201, Main Gear Door Locks

D Install the Case Drain Filter Element (Fig. 1)

XXXXX 1 Apply hydraulic lubricant or hydraulic fluid to the O-rings, the backup retainers, and the threads of the filter cap.

XXXXX 2 Install a new O-ring on the filter cap.

XXXXX 3 Using assembly bullet BLS-34529, install the O-ring and the backup retainers on the case drain filter element. (Fig 2)

XXXXX 4 Use the sizing die DAS-34530, compress the backup retainers into the groove of the case drain filter element. (Fig. 2)

XXXXX 5 Install the filter element in the checkout module.

XXXXX 6 Install the filter cap on the checkout module.

XXXXX 7 Tighten the filter cap for the case drain filter to 15-20 pound-feet.

XXXXX 8 Safety the filter cap with a lockwire.

E Install the Pressure Filter Element (Fig. 1)

XXXXX 1 Apply hydraulic lubricant or hydraulic fluid to the O-rings, the backup retainers, and the threads of the

A/C NUMBER:

CHECK BEING PERFORMED: Cust

W/C NUMBER: 218R2901 (continued)

MECH: INSP:

filter cap.

|____ XXXXX 2 Install a new O-ring on the filter cap.

|____ XXXXX 3 Using assembly bullet BLS-34533 install the O-ring and the backup retainers on the filter element. (Fig 2)

|____ XXXXX 4 Use the sizing die DAS-34534 compress the backup retainers into the groove of the filter element. (Fig. 2)

|____ XXXXX 5 Install the filter element in the checkout module.

|____ XXXXX 6 Install the filter cap on the checkout module.

|____ XXXXX 7 Tighten the filter cap for the pressure filter to 30-35 pound-feet.

|____ XXXXX 8 Safety the filter cap with a lockwire.

F Put the Airplane Back to Its Usual Condition.

|____ XXXXX 1 Remove TAG-OUT form M-142 from the Hydraulic Control Panel (P5).

|____ XXXXX 2 Pressurize the center hydraulic system and the reservoir (Ref 29-11-00).

|____ XXXXX 3 Do the system test procedure for the hydraulic pump and drive system of the ram air turbine (Ref 29-21-00).

|____ XXXXX 4 Make sure there are no leaks at the pressure switch on the checkout module.

CAUTION: QUICKLY CLEAN THE AREA AROUND THE CHECKOUT MODULE OF ALL HYDRAULIC FLUID. HYDRAULIC FLUID CAN CAUSE DAMAGE TO THE AIRPLANE EQUIPMENT.

|____ XXXXX 5 Clean all hydraulic fluid from the area (Ref 12-25-01).

WARNING: USE THE PROCEDURE IN 32-00-15 TO REMOVE THE DOOR LOCKS. THE DOORS OPEN AND CLOSE QUICKLY AND CAN

RAT CHECKOUT MODULE CASE DRAIN FILTER

PAGE:6 /6

A/C NUMBER:

CHECK BEING PERFORMED: Cust

W/C NUMBER: 218R2901 (continued)

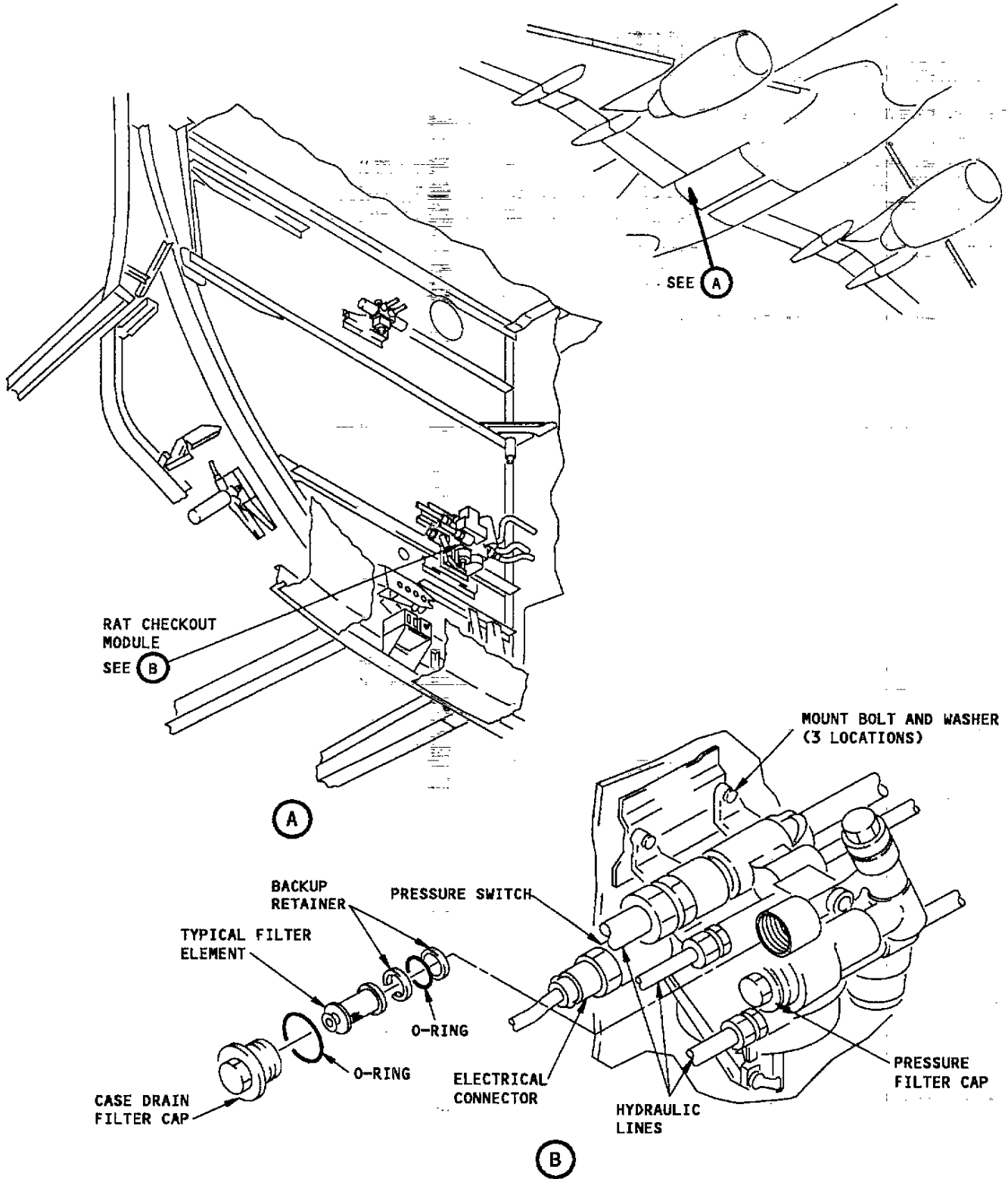
MECH: INSP:

CAUSE INJURY TO PERSONS OR DAMAGE TO EQUIPMENT.

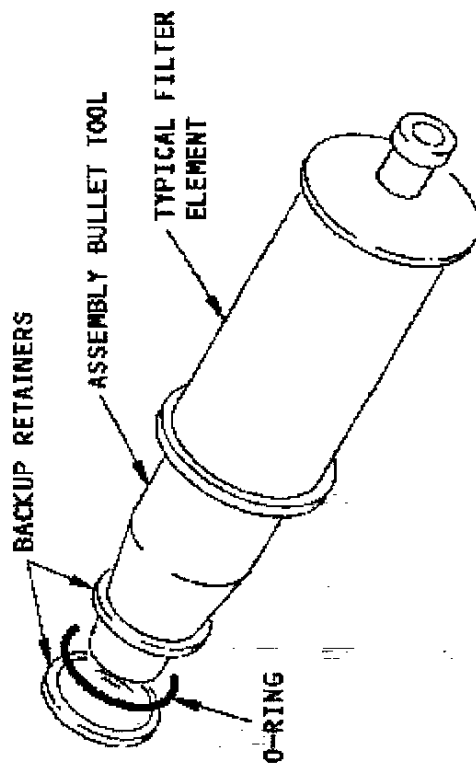
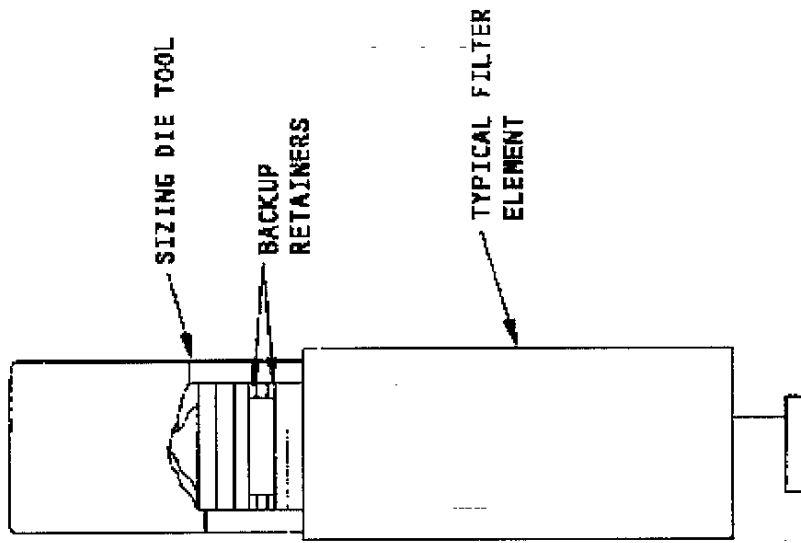
|____ XXXXX 6 Remove the hydraulic power if it is not necessary
(Ref 29-11-00).

*****END OF WORKCARD*****

218R2901



RAT Checkout Module Installation



Filter Element O-Ring and Back-up Retainers Installation