

ATA AIRLINES, INC.

AUXILIARY E/E COOLING SYSTEM

PAGE 1 / 2

CHECK BEING PERFORMED: Custom

ZONES: 211
A/C NUMBER:
REV. DATE: 02/24/00
FREQUENCY: 1C

W/C NUMBER: 221M2102 DATE:
W/O:
JAC CODE:

PANELS

119BL

REFERENCES

1

MECH INSP

OPERATIONALLY CHECK THE AUXILIARY E/E COOLING SYSTEM.

1 AIRPLANES WITH AUXILIARY E/E COOLING SYSTEM.

1 Do a Test of the Auxiliary Fan.

A References

- 1 24-22-00/201, Electrical Power Control
- 2 31-41-00/201, EICAS

B Procedure

- _____ XXXXX 1 Supply the electrical power to left and/or right main AC bus(es) (Ref 24-22-00).
- _____ XXXXX 2 Open these circuit breakers on the power distribution panel P6:
 - a 6F17, EQUIP COOL SUPPLY FAN 1
 - b 6F23, EQUIP COOL SUPPLY FAN 2
- _____ XXXXX 3 Close this circuit breaker on the P6 panel:
 - a 6D17, EQUIP COOL AUX FAN
- _____ XXXXX 4 Push the EQUIP COOL ALTN switch/light on the P5 panel to ALTN.
- _____ XXXXX 5 Listen to the fan noise to make sure the fan operates.
- _____ XXXXX 6 Close these circuit breakers on the P6 panel:
 - a 6F17, EQUIP COOL SUPPLY FAN 1

AUXILIARY E/E COOLING SYSTEM

PAGE:2 /2

A/C NUMBER:

CHECK BEING PERFORMED: Cust

W/C NUMBER: 221M2102 (continued)

MECH: INSP:

b 6F23, EQUIP COOL SUPPLY FAN 2

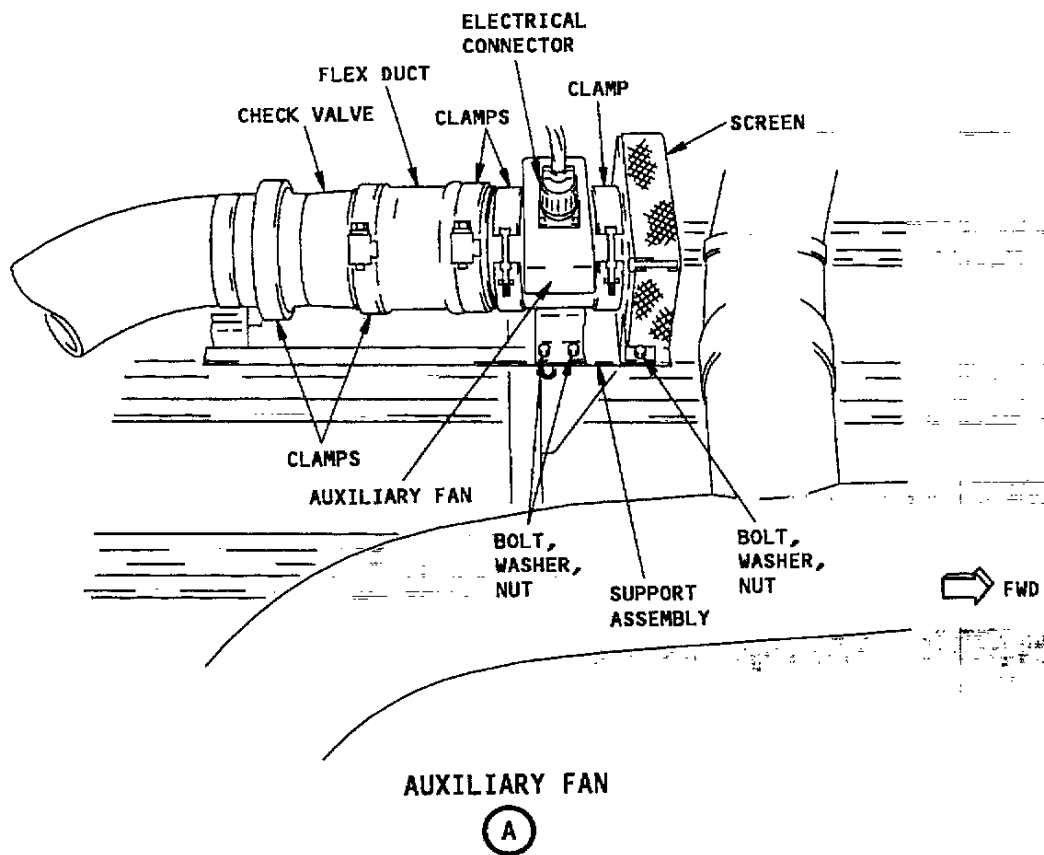
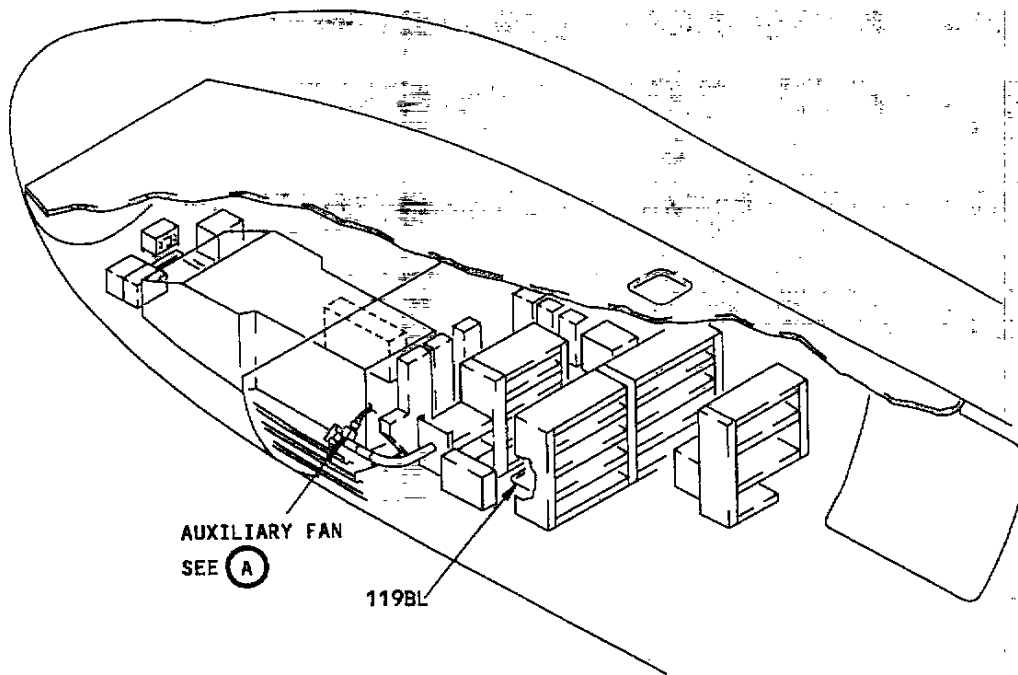
_____ XXXXX 7 Push the EQUIP COOL ALTN switch-light on the P5 panel to the usual position.

_____ XXXXX 8 Erase the FWD EQ SUP FAN 1 and FWD EQ SUP FAN 2 EICAS maintenance message (Ref 31-41-00).

_____ XXXXX 9 Remove electrical power if it is not necessary.

*****END OF WORKCARD*****

221M2102



AUXILIARY FAN FOR
EQUIPMENT COOLING

FIGURE 1

08/06/1998