

CABIN ZONE TEMPERATURE SENSOR FILTER

A/C NUMBER:

CHECK BEING PERFORMED: Cust

W/C NUMBER: 222M2101 (continued)

MECH: INSP:

-
- _____ XXXXX (a) For the filter in the flight compartment:
- 1) 11N24, ZONE TEMP CONT VLV CLOSE FLT DK.
- _____ XXXXX (b) For the filter in the forward cabin:
- 1) 11N25, ZONE TEMP CONT VLV CLOSE FWD.
- _____ XXXXX (b) For the filter in the mid passenger cabin:
- 1) 11N26, ZONE TEMP CONT VLV CLOSE MID.
- _____ XXXXX (c) For the filter in the aft cabin:
- 1) 11N27, ZONE TEMP CONT VLV CLOSE AFT.
- _____ XXXXX (3) Find the flight compartment filter behind the zone temperature sensor inlet grille on the flight compartment ceiling. The grille is installed immediately left of the overhead circuit breaker panel, P11.
- _____ XXXXX (4) Find forward, mid, or aft cabin filter, look at the bottom of the right bullnose panels for the inlet grille.
- C. Remove the forward, mid or aft zone temperature sensor filter.
- _____ XXXXX (1) Put the metal rod into the hole at edge of the sensor inlet grille to open the grille. Apply pressure to the rod until the grille releases.
- CAUTION: DO NOT APPLY TOO MUCH FORCE TO REMOVE THE GRILLE. DAMAGE TO THE GRILLE OR THE BULLNOSE CAN RESULT.
- _____ XXXXX (2) Remove the grille and filter (Ref Fig. 2).
- D. Remove the flight compartment zone temperature sensor filter:
- _____ XXXXX (1) Push the spring clip to open the grille.

A/C NUMBER:

CHECK BEING PERFORMED: Cust

W/C NUMBER: 222M2101 (continued)

MECH: INSP:

_____ XXXXX (2) Remove the grille and filter.

2. Install the Zone Temperature Sensor Filter (Fig. 1, 2).

A. Consumable Materials.

(1) Filter Material - Scott Filter Foam, 3/16 inch thickness, porosity grade 45 PPI, color - grey, flame retardant, Scott Paper Co. (Foam Div), 1500 E. 2nd St., Chester, PA (Ref 20-30-07).

B. Procedure.

_____ XXXXX (1) Cut the new filter from the foam filter material. Make sure the new filter has the same dimensions as the filter that is replaced.

NOTE: Flight compartment filter dimensions
1.5 X 1.9 inches.

Passenger compartment filter dimensions
1.3 X 2.8 inches.

_____ XXXXX (2) Put the filter in the grille.

_____ XXXXX (3) Install the edge of the grille that is opposite to the spring latch.

_____ XXXXX (4) Push the other edge until the grille clicks into position.

C. Put the Airplane Back to Its Usual Condtion.

(1) 757-200;
Remove the DO-NOT-CLOSE tags and close these circuit breakers on the P11 panel:

_____ XXXXX (a) For the filter in the flight compartment:

1) 1N25, ZONE TEMP CONT VLV CLOSE FLT DK.

_____ XXXXX (b) For forward cabin zone temperature sensor filter:

CABIN ZONE TEMPERATURE SENSOR FILTER

A/C NUMBER:

CHECK BEING PERFORMED: Cust

W/C NUMBER: 222M2101 (continued)

MECH: INSP:

1) 11N26, ZONE TEMP CONT VLV CLOSE FWD.

_____ XXXXX

(c) For aft cabin zone temperature sensor filter:

1) 11N27, ZONE TEMP CONT VLV CLOSE AFT.

(2) 757-300;

Remove the DO-NOT-CLOSE tags and close these circuit breakers on the P11 panel:

_____ XXXXX

(a) For the filter in the flight compartment:

1) 11N24, ZONE TEMP CONT VLV CLOSE FLT DK.

_____ XXXXX

(b) For the filter in the forward cabin:

1) 11N25, ZONE TEMP CONT VLV CLOSE FWD.

_____ XXXXX

(b) For the filter in the mid passenger cabin:

1) 11N26, ZONE TEMP CONT VLV CLOSE MID.

_____ XXXXX

(c) For the filter in the aft cabin:

1) 11N27, ZONE TEMP CONT VLV CLOSE AFT.

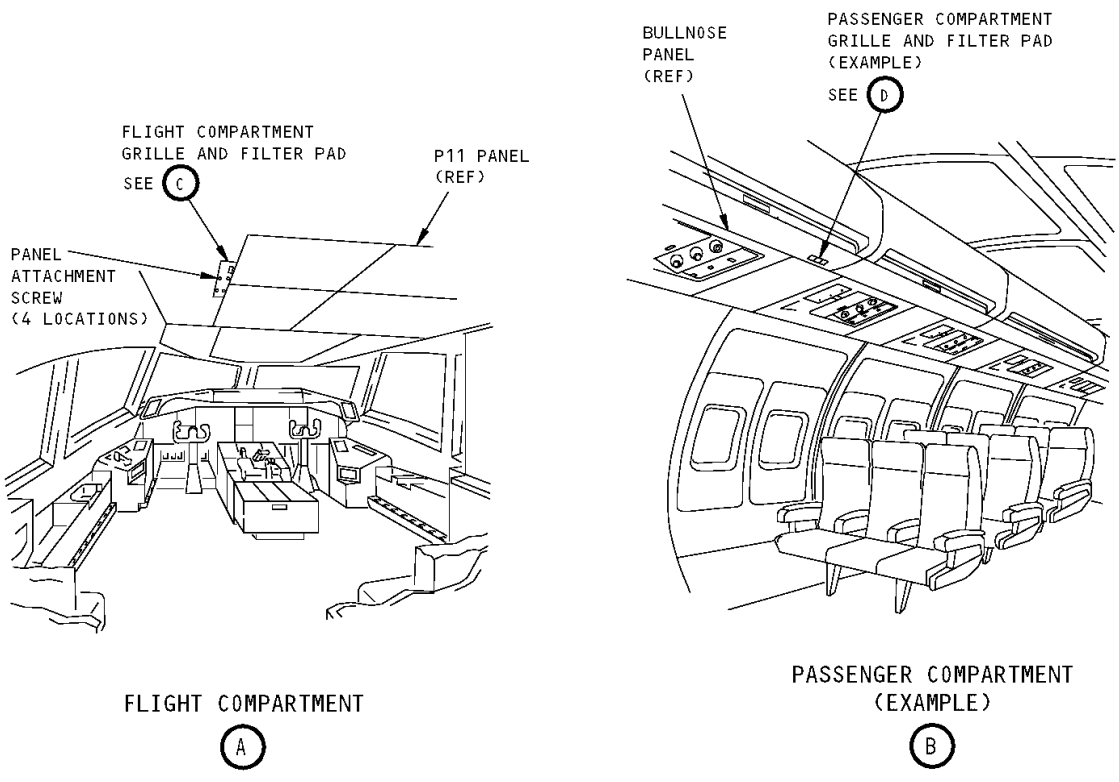
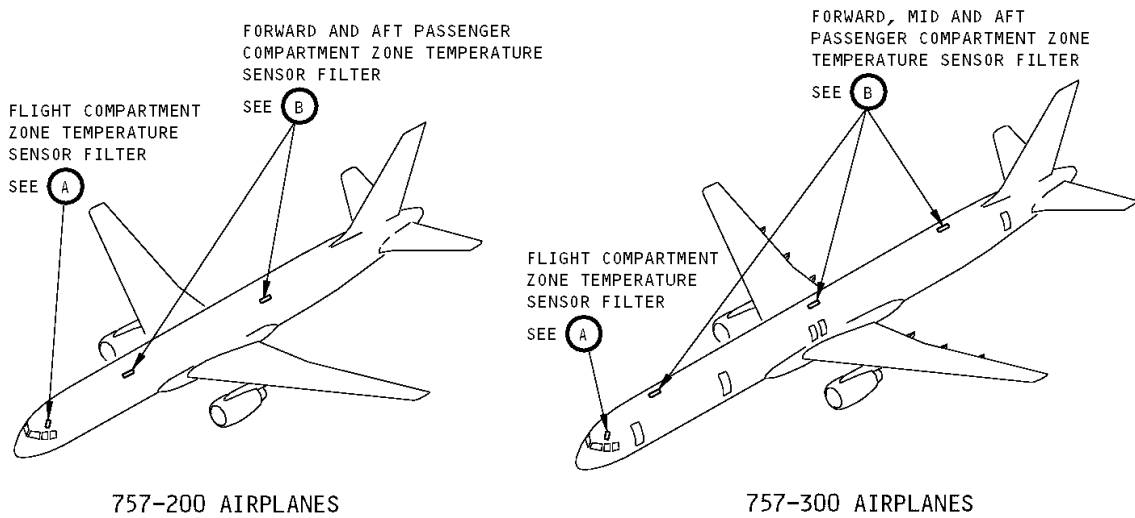
_____ XXXXX

(3) Do a visual check, through the grille, to make sure the filter is in the correct position.

_____ XXXXX

(4) Make sure no clearance is found between the edges of the filter and the grille.

*****END OF WORKCARD*****

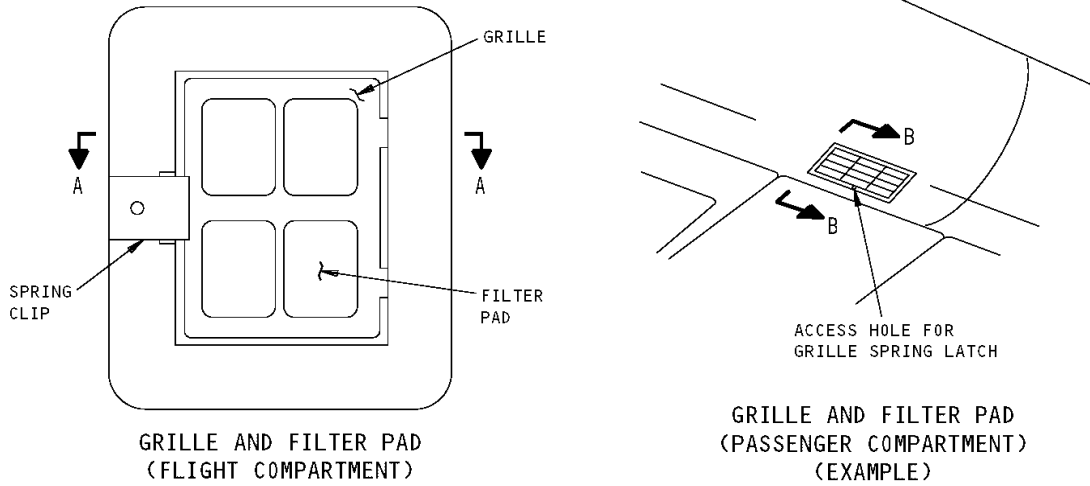


Zone Temperature Sensor Filter Installation

CABIN ZONE TEMPERATURE SENSOR FILTER

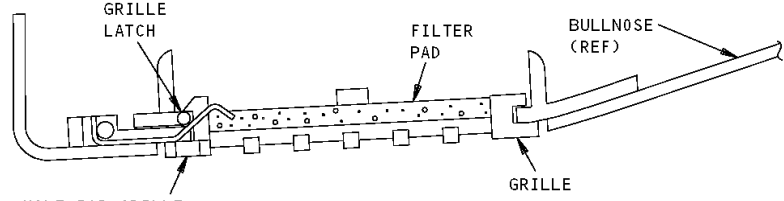
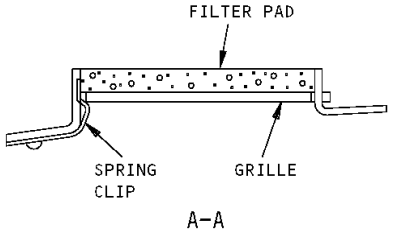
FIGURE 1

06/06/2002

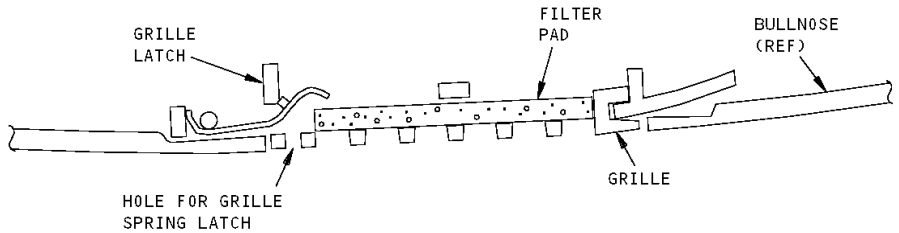


(C)

(D)



757-200 AIRPLANES
B-B



757-300 AIRPLANES
B-B

Zone Temperature Sensor Filter Installation

CABIN ZONE
TEMPERATURE
SENSOR FILTER

FIGURE 2

06/06/2002