



A/C NUMBER:

CHECK BEING PERFORMED: Cust

W/C NUMBER: 230L1201 (continued)

MECH: INSP:

---

XXXXX 1 Prepare For the Lubrication (Fig. 1).

- A Position the stabilizer to approximately neutral position (6 units of trim).
- B Remove the pressure from the right and center hydraulic systems and reservoirs (Ref. AMM 29-11-00).
- C Pull the control column full aft. Use a rope to hold the control column in this position.
- 1) Attach DO-NOT-OPERATE tags to the control column.
- D Put the L, R, and C FLT CONTROL SHUTOFF switches on sidewall panel, P61, to OFF.
- E Put the RIGHT and CENTER STAB TRIM SHUTOFF valve switches on control stand panel, P10, to the CUTOUT position.
- F Open these circuit breakers on overhead panel, P11, and attach DO-NOT-CLOSE tags:
- 1) 11B19, STAB TRIM ALT (IF INSTALLED)
- 2) 11C12, STAB TRIM SHUTOFF RIGHT
- 3) 11C13, STAB TRIM SHUTOFF LEFT
- 4) 11H11 or 11C05, STAB TRIM CONT L
- 5) 11H17, FLT CONT SHUTOFF TAIL LEFT
- 6) 11H18, FLT CONT SHUTOFF TAIL CTR
- 7) 11H20, STAB TRIM CONT R
- 8) 11H28, FLT CONT SHUTOFF TAIL RIGHT

WARNING: INSTALL BOTH ELEVATOR POWER CONTROL ACTUATOR (PCA) LOCK ASSEMBLIES (PCA AND PCA LINKAGE LOCK ASSEMBLIES). INSTALL THE PCA LINKAGE LOCK ASSEMBLY BEFORE THE PCA LOCK ASSEMBLY. USE A ROPE TO HOLD THE ELEVATOR CONTROL COLUMN IN THE FULL AFT POSITION

A/C NUMBER:

CHECK BEING PERFORMED: Cust

W/C NUMBER: 230L1201 (continued)

MECH: INSP:

WHILE THE LOCK ASSEMBLIES ARE INSTALLED. THESE PRECAUTIONS WILL PREVENT INJURY TO PERSONS AND DAMAGE TO THE AIRPLANE.

G Manually move the elevator up and install elevator PCA lockout equipment as follows (Fig. 1).

NOTE: A force of approximately 60 pounds on the elevator trailing edge is necessary to lift the elevator.

1) Install the PCA linkage lock assembly as shown in Detail B.

2) Install the PCA lock assembly.

2 Fully lubricate the six (6) sets of elevator PCA load loop bearings, all the elevator hingeline bearings and all Input linkages as illustrated in Figures 2 and 3. Make sure the grease passes through the lubrication passageway into the bearing cavities. Make sure the grease completely fills the bearing cavities. Do not permit the grease to exit prematurely through the slits in the grease retainers, without first filling the bearing cavity.

NOTE: These bearings, when installed, rotate only a few degrees in each direction from their neutral position.

They do not rotate a full turn. Therefore it is very important that you make sure the grease completely fills

the bearing cavity before it exits through the slits in

the grease retainers.

(a) Lubricate the elevator PCA's (Fig. 2).

(b) Lubricate the elevator hinge's (Fig. 2).

(c) Lubricate the elevator PCA input linkage's (Fig. 3).

XXXXX 3 Put the Airplane Back to Its Usual Condition.

A Manually move the elevator up and remove the elevator PCA

A/C NUMBER:

CHECK BEING PERFORMED: Cust

W/C NUMBER: 230L1201 (continued)

MECH: INSP:

---

lockout equipment.

NOTE: A force of approximately 60 pounds on the elevator trailing edge is necessary to lift the elevator.

1) Remove the PCA lock assembly.

2) Remove the PCA linkage lock assembly.

B Close these circuit breakers on overhead panel, P11 and remove DO-NOT-CLOSE tags:

1) 11B19, STAB TRIM ALT (IF INSTALLED)

2) 11C12, STAB TRIM SHUTOFF RIGHT

3) 11C13, STAB TRIM SHUTOFF LEFT

4) 11H11 or 11C05, STAB TRIM CONT L

5) 11H17, FLT CONT SHUTOFF TAIL LEFT

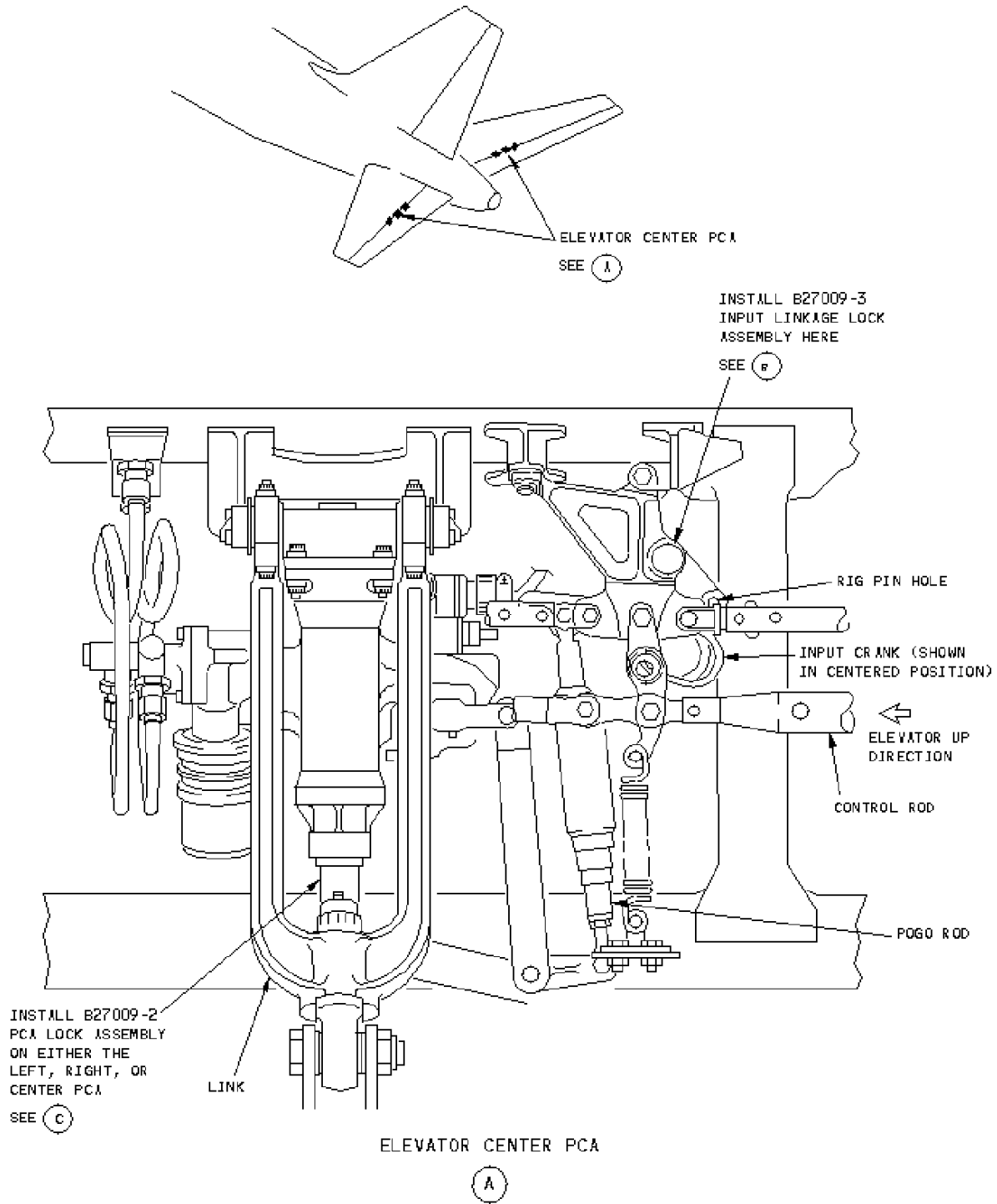
6) 11H18, FLT CONT SHUTOFF TAIL CTR

7) 11H20, STAB TRIM CONT R

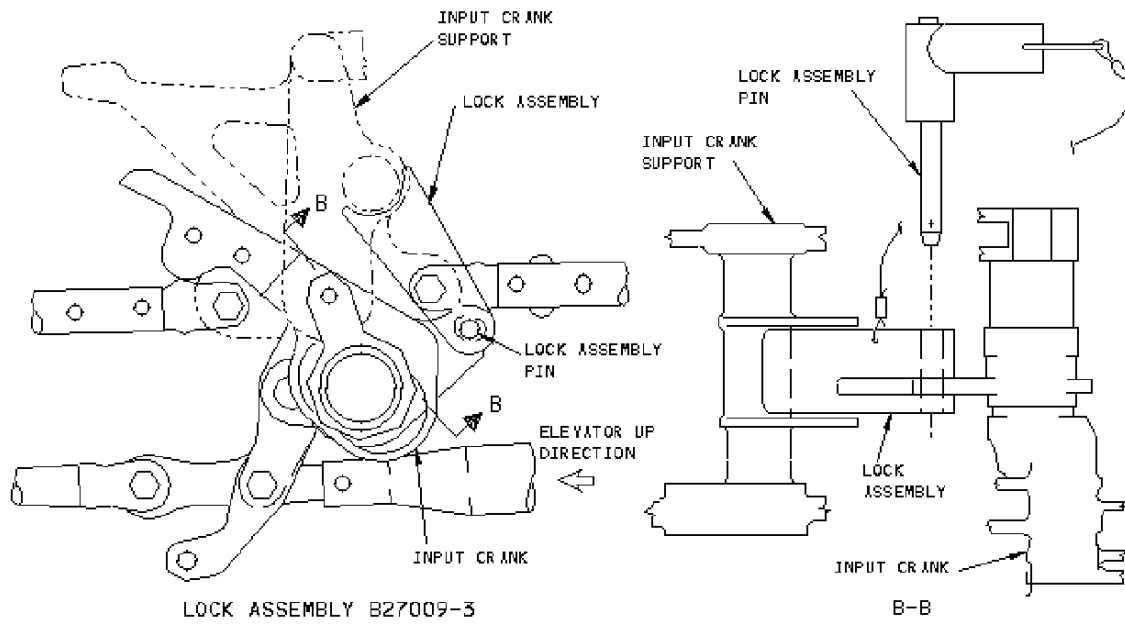
8) 11H28, FLT CONT SHUTOFF TAIL RIGHT

C Remove rope and DO-NOT-OPERATE tags from control column.

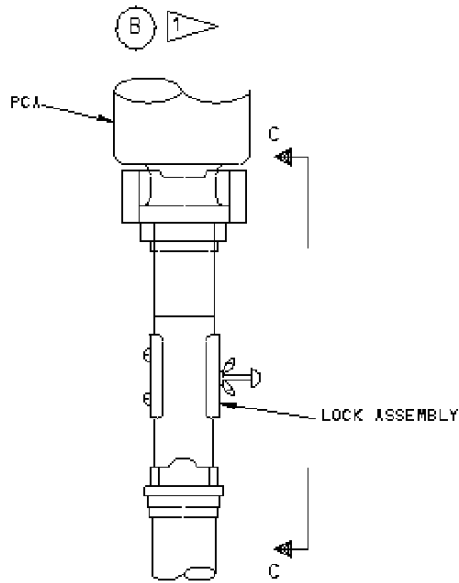
\*\*\*\*\* END OF WORKCARD \*\*\*\*\*



Elevator PCA Lockout Equipment Installation



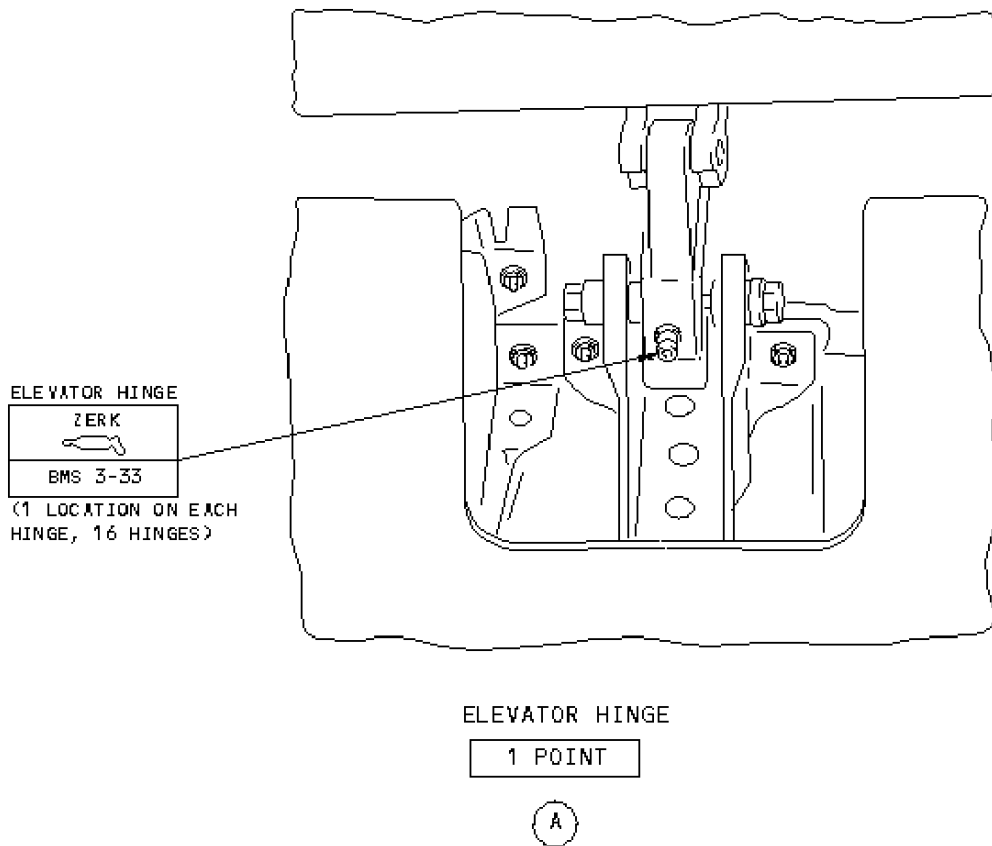
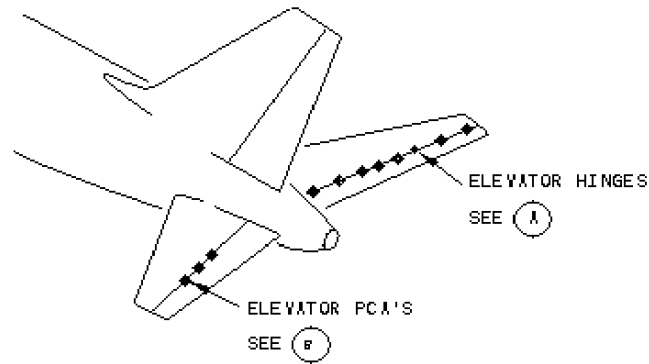
LOCK ASSEMBLY B27009-3  
(PCA LINKAGE IN UP POSITION)



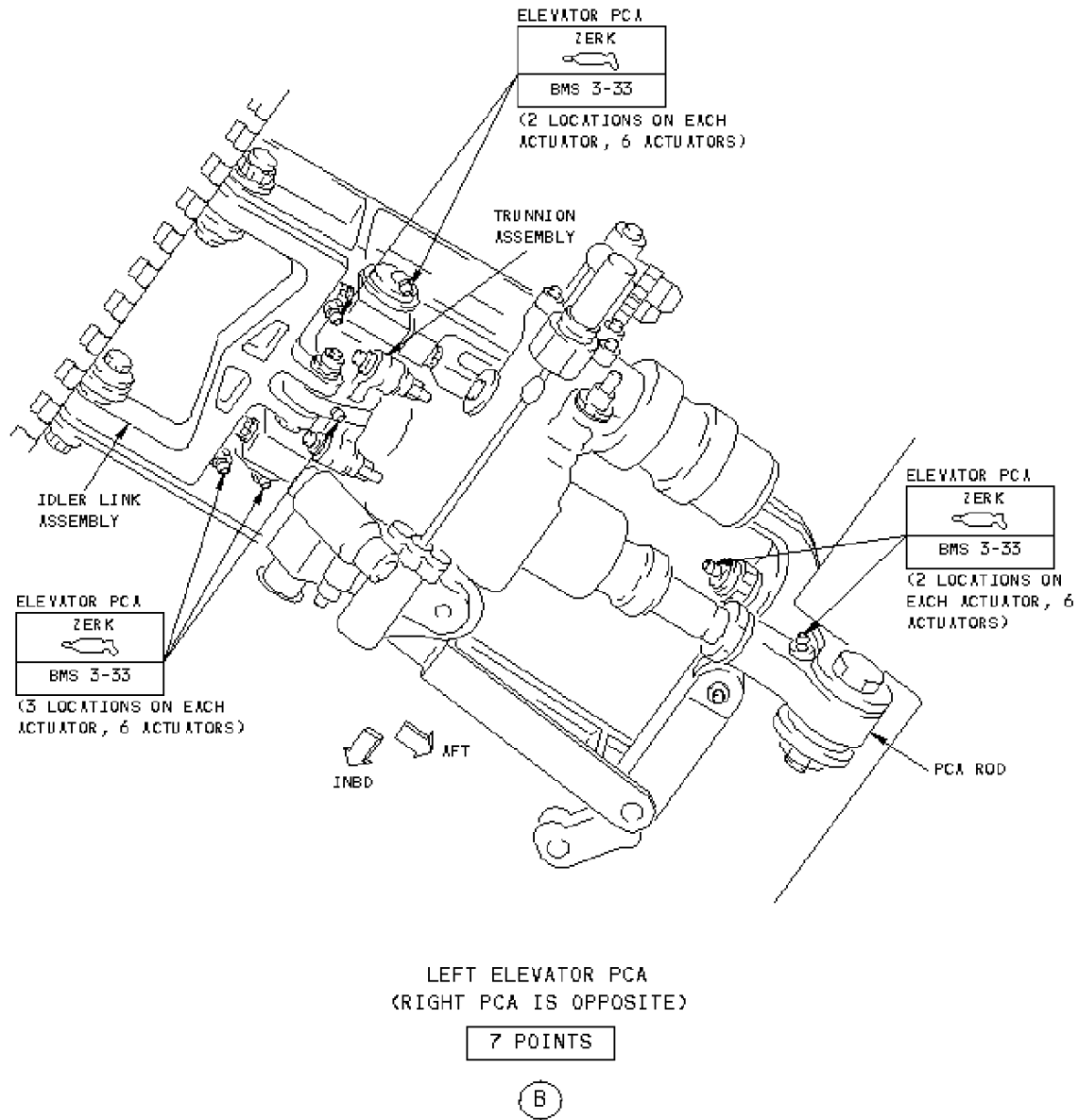
LOCK ASSEMBLY B27009-2  
(PCA EXTENDED)

1 INSTALL LOCK ASSEMBLY B27009-3  
BEFORE B27009-2

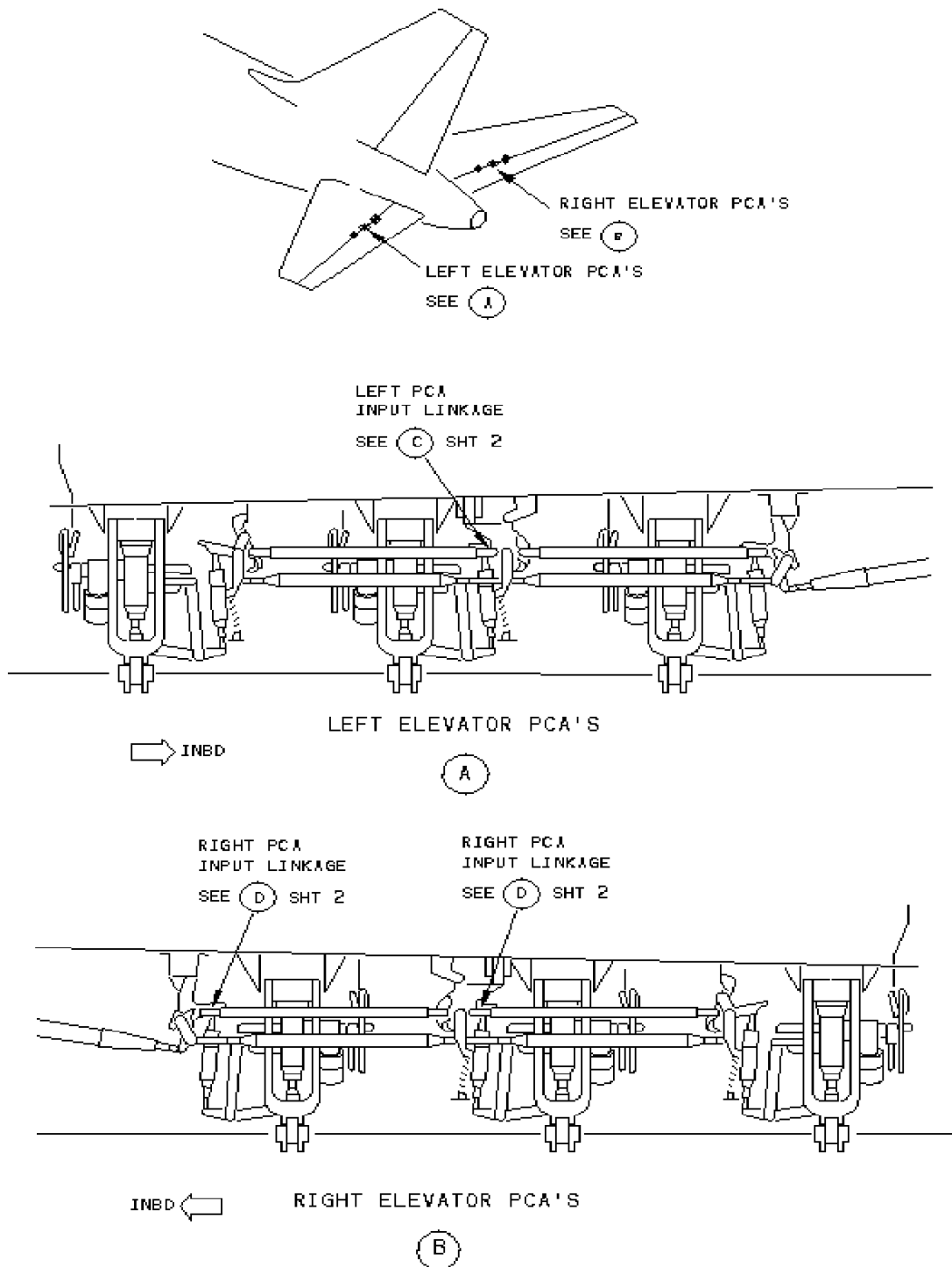
Elevator PCA Lockout Equipment Installation



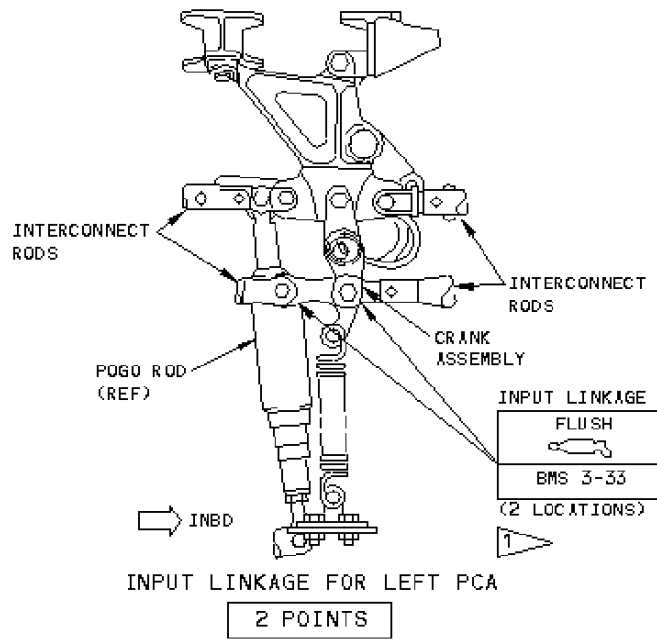
Elevator Hinge and Power Control Actuator (PCA) Lubrication



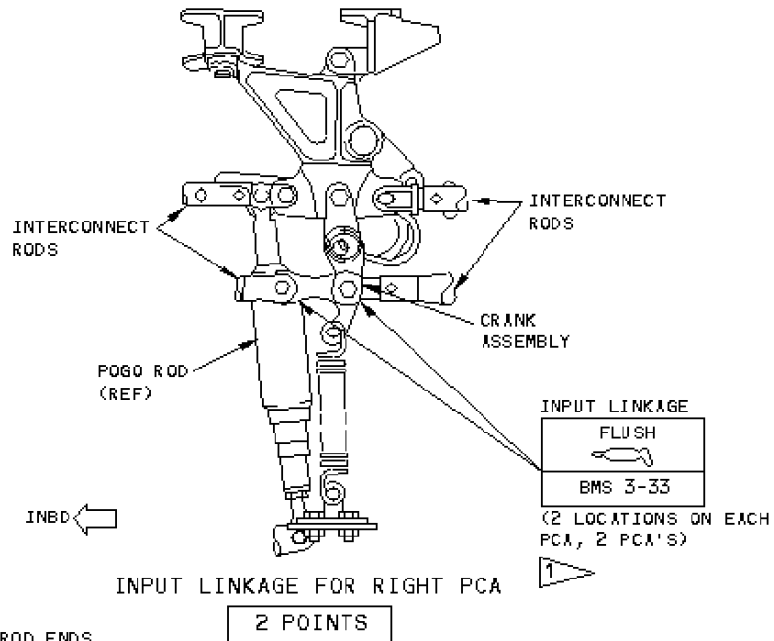
Elevator Hinge and Power Control Actuator (PCA) Lubrication



Elevator Power-Control-Actuator (PCA) Input Linkage Lubrication



C



D

1 LUBRICATE ONLY THE ROD ENDS WHICH CONTAIN TWO BEARINGS, AS IDENTIFIED IN DETAIL A AND B

Elevator Power Control Actuator (PCA) Input Linkage Lubrication