

ATA AIRLINES, INC.

VERTICAL STABILIZER REAR SPAR TO TRAILING EDGE AND RUDDER

PAGE 1 / 1

CHECK BEING PERFORMED: Custom

ZONES: 324 325  
A/C NUMBER:  
REV. DATE: 09/17/03  
FREQUENCY: 1C

W/C NUMBER: 232I5501 DATE:  
W/O:  
JAC CODE:

PANELS

324AL 324CL  
324BL

REFERENCES

FIG 1

MECH INSP

INTERNAL SURVEILLANCE VERTICAL STABILIZER

XXXXX \_\_\_\_\_ 1 PERFORM INTERNAL SURVEILLANCE OF VERTICAL STABILIZER REAR SPAR  
TO STABILIZER TRAILING EDGE BETWEEN BODY DECK AND RIB 7.

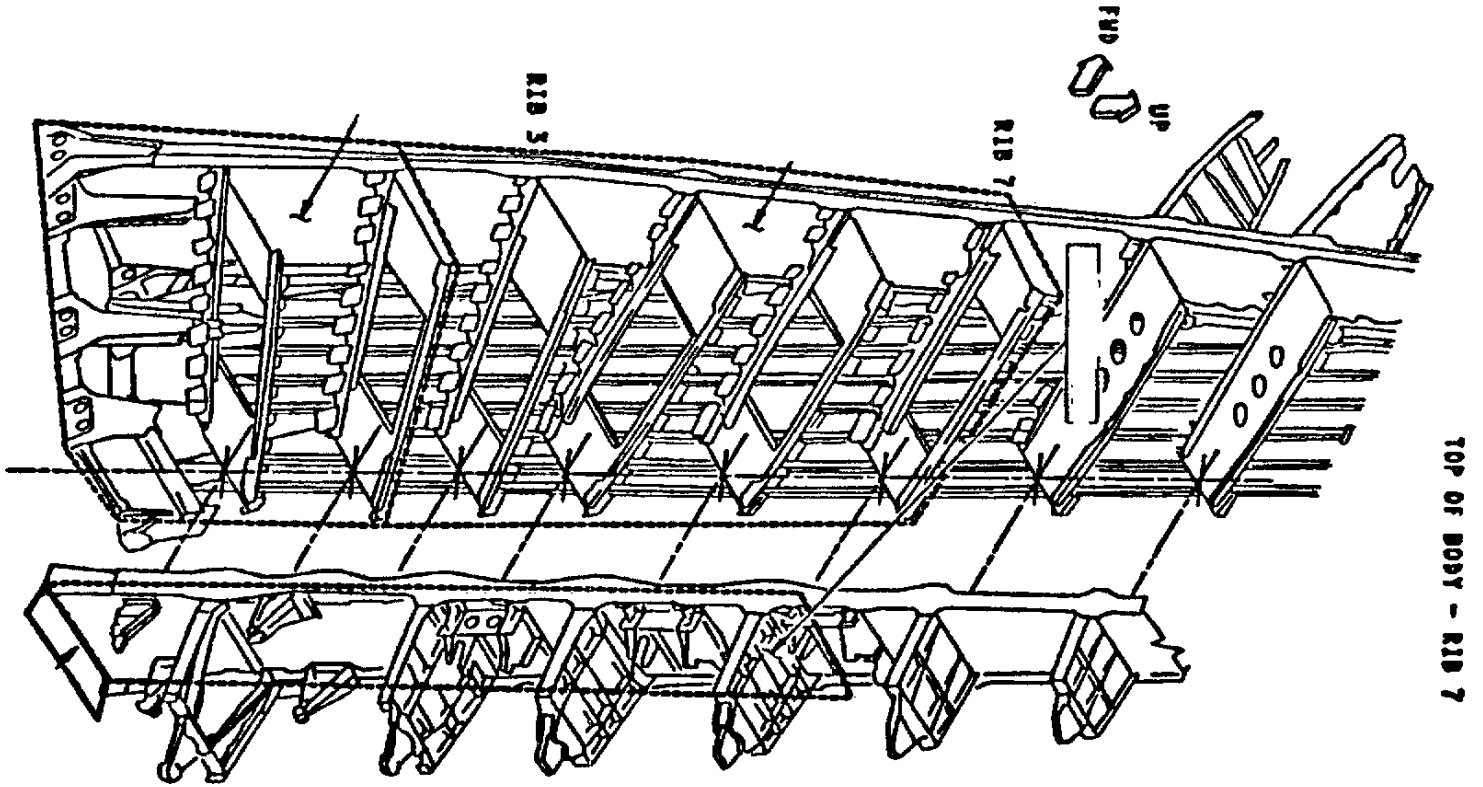
XXXXX \_\_\_\_\_ 2 PERFORM INTERNAL SURVEILLANCE OF VERTICAL STABILIZER TRAILING  
EDGE SUPPORT STRUCTURE AND BODY SKIN. RUDDER LEADING EDGE  
FROM TOP OF BODY TO RUDDER STA 206 INCLUDING VERTICAL  
STABILIZER REAR SPAR, RUDDER FRONT SPAR, HINGES AND ACTUATOR  
SUPPORT FITTINGS.

XXXXX \_\_\_\_\_ 3 PERFORM DETAILED INTERNAL INSPECTION OF VERTICAL STABILIZER  
REAR SPAR TO BODY ATTACH FITTING ON AFT SIDE OF REAR SPAR IN  
AREAS OF ATTACHMENTS.

XXXXX \_\_\_\_\_ 4 PERFORM EXTERNAL SURVEILLANCE OF RUDDER EXTERNAL SURFACE  
INCLUDING FASTENERS THROUGH FRONT SPAR BETWEEN RUDDER STA  
131.1 & 305.8.

\*\*\*\*\*END OF WORKCARD\*\*\*\*\*

23215501



VERTICAL STABILIZER INTERNAL STRUCTURE