

ATA AIRLINES, INC.

NO. 1 ENGINE AHAD CONTOUR CHECK

PAGE 1 / 1

CHECK BEING PERFORMED: Custom

ZONES: 415 416
A/C NUMBER:
REV. DATE: 05/23/01
FREQUENCY: 1C

W/C NUMBER: 241M7802 DATE:
W/O:
JAC CODE:

REFERENCES

FIGURE 1, AMM 78-30-00, 78-31-00

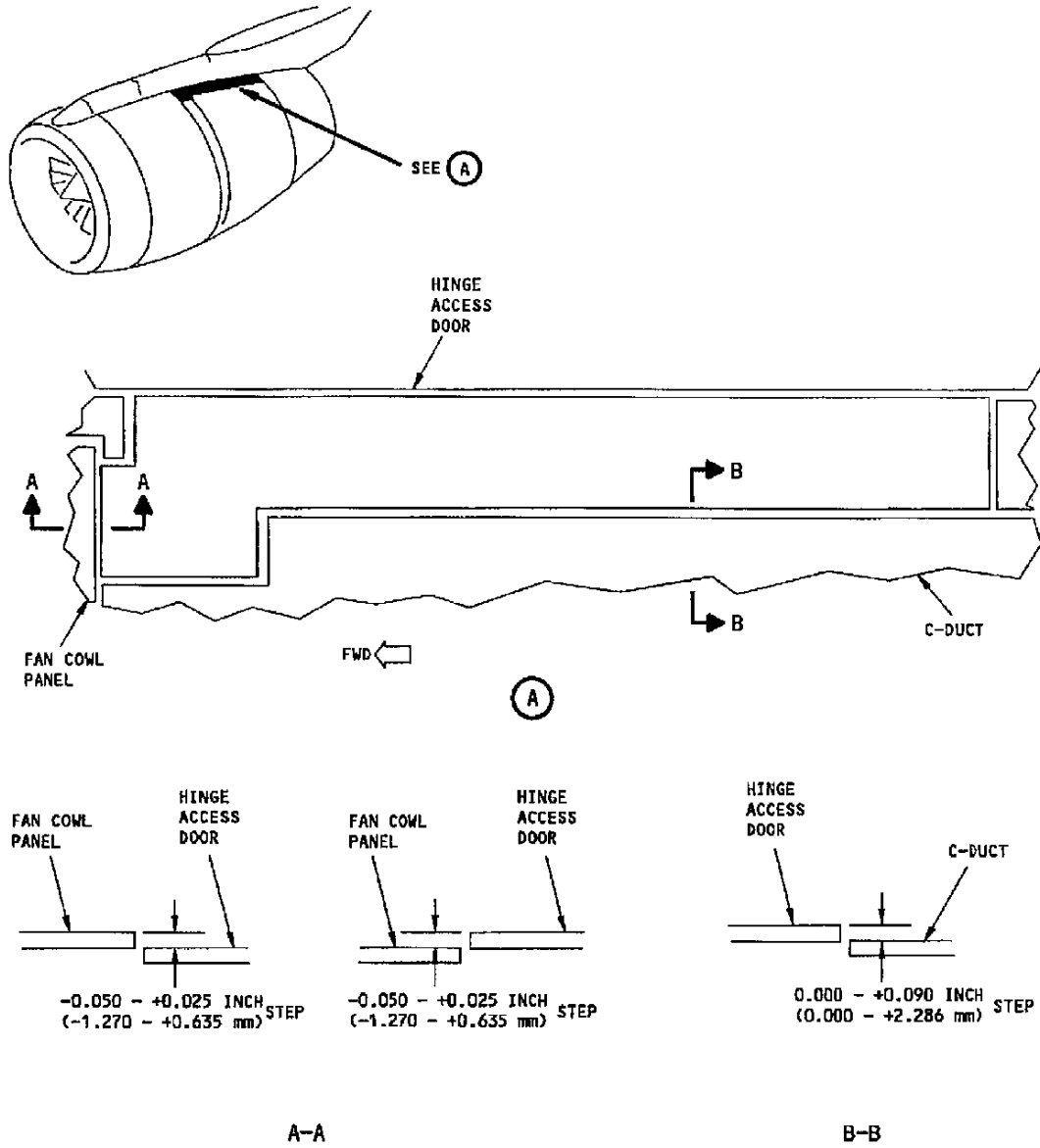
MECH INSP

NO. 1 ENGINE AUTOMATIC HINGE ACCESS DOOR (AHAD) CONTOUR CHECK

_____ 1 CHECK THE CONTOUR OF THE NO. 1 ENGINE AHAD.

- A Slowly open the inboard thrust reverser C-duct and then close it making sure the inboard AHAD opens and closes with the C-duct (AMM 78-31-00/201).
- B Slowly open the outboard thrust reverser C-duct and then close it making sure the outboard AHAD opens and closes with the C-duct (AMM 78-31-00/201).
- C Check the contours of the inboard AHAD as shown in figure 1.
- D Check the contours of the outboard AHAD as shown in figure 1.
- E If the contours are out of tolerances or the AHAD does not open and close with the C-duct, perform AHAD adjustment procedures per AMM 78-30-00/501.

*****END*****



AHAD AEROSMOOTHNESS CONTOUR LIMITS
FIGURE 1

7/16/2001