

#2 ENGINE IDG OIL/FILTER CHANGE

PAGE:2 /6

A/C NUMBER:

CHECK BEING PERFORMED: Cust

W/C NUMBER: 242L2401 (continued)

MECH: INSP:

(1) Oil servicing Gun and drain hose with ozone coupling WF150-1 or equivalent to connect with the pressure fill coupling.

(2) Container, 4-gallon capacity.

D. Materials: Oil MIL-L-23699 (Ref 20-30-04) (Exxon 2380).

E. IDG Oil/Filter Change.

_____ XXXXX

(1) Drain the IDG oil.

NOTE: Wait at least 5 minutes after engine shutdown before draining oil.

CAUTION: USE THE CORRECT ADAPTER TO RELEASE THE PRESSURE FROM THE IDG. AN INCORRECT ADAPTER WILL NOT RELEASE THE PRESSURE. THIS CAN CAUSE AN INCORRECT OIL LEVEL IN THE IDG AND THE SUBSEQUENT FAILURE OF THE IDG.

(a) Remove the cover from the overflow drain coupling for the IDG.

(b) Put a container below the IDG.

(c) Put the end of the overflow drain hose into the container.

WARNING: BE CAREFUL WHEN YOU CONNECT THE OVERFLOW DRAIN HOSE. PRESSURE IN THE IDG CAN CAUSE HOT OIL TO COME OUT OF THE OVERFLOW DRAIN COUPLING AND CAUSE INJURY TO PERSONS.

CAUTION: DO NOT USE TOOLS OR OTHER OBJECTS TO OPEN IDG FITTINGS. THIS CAN DAMAGE THE FITTINGS AND COULD LEAD TO IMPROPER SERVICING IF THE DRAIN PORT IS OPENED IN THIS MANNER.

(d) Connect the overflow drain hose to the overflow drain.

NOTE: It is usual for some of the oil to drain from the IDG when you connect the hose.

#2 ENGINE IDG OIL/FILTER CHANGE

PAGE:3 /6

A/C NUMBER:

CHECK BEING PERFORMED: Cust

W/C NUMBER: 242L2401 (continued)

MECH: INSP:

-
- (e) Permit the oil to flow from the IDG into the container.
 - (f) Remove the case drain plug and allow the oil to flow from the IDG into the container.
 - (g) Discard the used O-ring.

CAUTION: NEVER USE A CAN OF OIL WHICH WAS OPENED PREVIOUSLY AND ALLOWED TO SIT. THE OIL WILL READILY DRAIN IN WATER! USE ONLY FRESHLY OPENED CANS.

NOTE: Always use new, unopened cans of oil when servicing IDGs. Check the oil service gun and tube for dirt and/or moisture. Water and chlorine (from cleaning solvents) must be flushed with oil.

_____ XXXXX

(2) Flush the IDG oil.

- (a) With a fresh oil can (2380) attached to the oil service gun, flush the gun itself.
- (b) Remove the cover from the pressure fill coupling from the IDG.
- (c) Connect the oil-in hose of the service gun to the pressure fill couplings for the IDG.
- (d) Use the pump on the service gun to put oil into the IDG.
- (e) Stop the pump on the service gun after 4 to 6 quarts of oil drains from the IDG.

_____ XXXXX

(3) Replace the scavenge filter.

- (a) Remove the scavenge filter as follows: (Ref 24-11-02) (See figure 1).
 - 1) Remove the wire which locks the scavenge filter cover.
 - 2) Put the container under the scavenge filter.

WARNING: USE CARE WHEN REMOVING THE FILTER COVER. HOT OIL MAY FLOW FROM THE SCAVENGE FILTER WHEN THE FILTER COVER IS REMOVED. HOT OIL CAN CAUSE SERIOUS INJURY.

- 3) Remove the filter cover. Discard the O-ring. Allow the oil to flow out of the filter into the container.
- 4) Remove the filter element. Discard the O-ring.
- 5) Inspect filter and oil for any contaminants. Check differential pressure indicator (red button). Report any findings to Powerplant Engineering.

(b) Install the scavenge filter as follows:

NOTE: There are two types of filters currently in use. They differ in length and are NOT interchangeable. Use a proper filter-sized to fit the cavity.

- 1) Lubricate and install a new O-ring on the filter element.
- 2) Lubricate and install a new O-ring on the filter cover.
- 3) Install the filter element in the filter cavity.

WARNING: BE SURE THE FILTER COMPONENTS ARE SEATED IN THE FILTER CAVITY BEFORE INSTALLING THE FILTER COVER. DO NOT FORCE THE FILTER COMPONENTS INTO THE HOUSING BY TIGHTENING THE FILTER COVER. FILTER COMPONENTS MAY BE DAMAGED IF NOT PROPERLY INSTALLED.

- 4) Screw in the filter cover. Tighten to 156-180 pound-inches.
- 5) Lock the filter cover and wire.

#2 ENGINE IDG OIL/FILTER CHANGE

PAGE:5 /6

A/C NUMBER:

CHECK BEING PERFORMED: Cust

W/C NUMBER: 242L2401 (continued)

MECH: INSP:

6) Push in the red pressure differential indicator button if it is extended.

_____ XXXXX

(4) Install Case Drain Plug.

(a) Lubricate and install a new O-ring on the case drain.

(b) Install the case drain plug.

(c) Tighten the case drain plug to 55-75 pound-inches.

(d) Lock the case drain plug with a wire.

_____ XXXXX

(5) Service the IDG oil system (figure 1).

(a) Use the pump on the service gun to fill the IDG with oil.

(b) Stop pumping on the service gun when a minimum of one quart of oil flows into the container.

NOTE: The one quart of oil does not include the oil already drained.

(c) Disconnect the service gun oil-in hose from the pressure fill coupling for the IDG.

(d) Install the cover on the pressure fill coupling for the IDG.

CAUTION: DO NOT REMOVE THE OVERFLOW DRAIN HOSE FROM THE IDG UNTIL THE OIL FLOW HAS DECREASED TO DROPS. FAILURE TO DRAIN THE IDG CORRECTLY WILL LEAVE TOO MUCH OIL IN THE IDG. THIS CONDITION WILL CAUSE DAMAGE TO THE IDG.

(e) When the oil flow from the overflow drain hose decreases to drops, remove the overflow drain hose.

(f) Install the cover on the overflow drain coupling for the IDG.

#2 ENGINE IDG OIL/FILTER CHANGE

PAGE:6 /6

A/C NUMBER:

CHECK BEING PERFORMED: Cust

W/C NUMBER: 242L2401 (continued)

MECH: INSP:

(g) Close the IDG access panel.

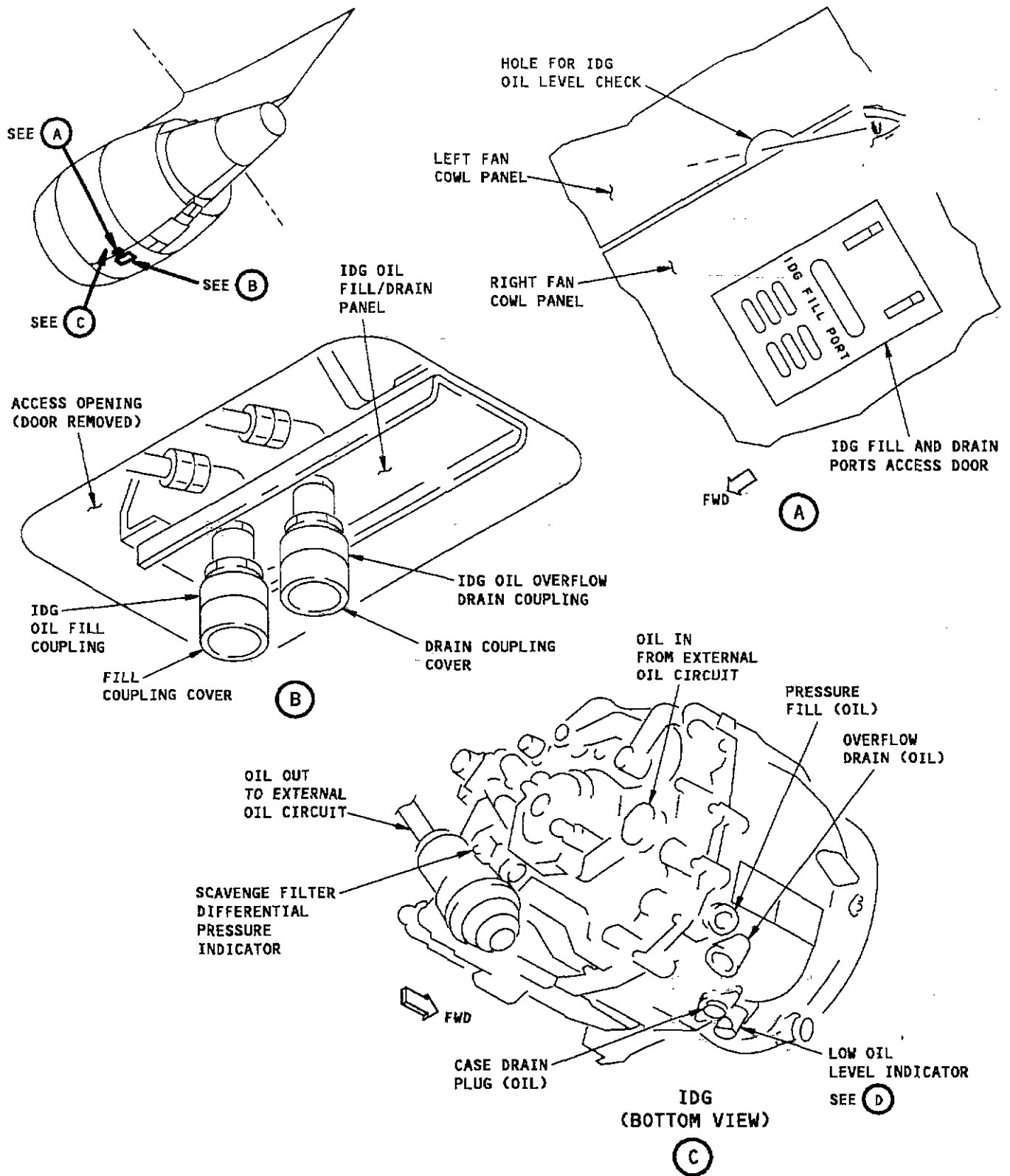
Note: American Trans Air does not rely on prisms for indication of proper IDG oil level. Oil level is ensured by servicing the IDG until one quart of oil overflows through the drain hose and oil flow decreases to drops. See M.M. 12-13-03.

F. If the IDG oil was changed because of possible contamination (water, chlorine, skydrol, etc), clean the system as follows:

(1) Operate the engine until the IDG oil temperature is 175 degrees Fahrenheit.

(2) Repeat the procedure "Change the IDG Oil".

*****END OF WORKCARD*****



Integrated Drive Generator Oil Servicing