

CHECK BEING PERFORMED: Custom

ZONES: 430 521 541
A/C NUMBER:
REV. DATE: 06/07/06
FREQUENCY: PCI

W/C NUMBER: 254I5405
DATE:
W/O:
JAC CODE:

REFERENCES

1 CP54-430-02I

MECH INSP

{CPCP} #1 NACELLE STRUT-TO-WING FITTING

NOTE: THE INTENT OF THIS INSPECTION IS TO BE ACCOMPLISHED IN CONJUNCTION WITH THE BOEING STRUT IMPROVEMENT PROGRAM (SIP). THE FOLLOWING VISUAL INSPECTION IS TO BE CONDUCTED WITH THE NACELLE STRUT REMOVED FROM THE AIRCRAFT.

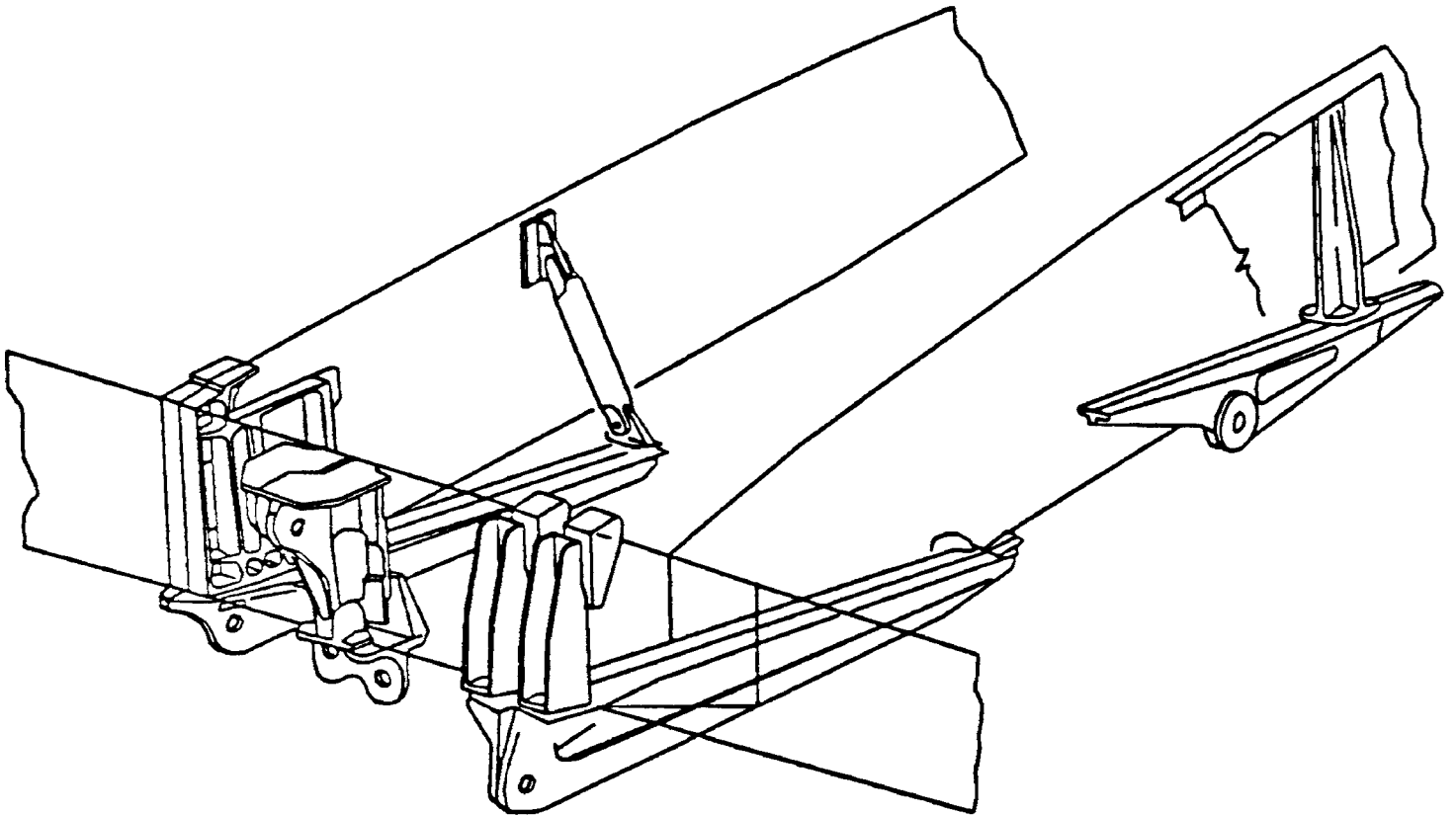
1. PERFORM A VISUAL INSPECTION OF THE FOLLOWING STRUCTURES.

|XXXX _____ A. {CP54-430-02I} VISUALLY INSPECT ALL #1 NACELLE STRUT-TO-WING FITTINGS, INCLUDING WING FITTINGS, EXPOSED WING SKIN, WITH PARTICULAR ATTENTION TO DIAGONAL BRACE FITTINGS, UPPER LINK FITTINGS, MIDSPAR CLEVIS, AND FITTINGS. CLEAR ANY BLOCKED HOLES OR GAPS THAT MAY HINDER DRAINAGE.

FOR CRACKS, PERMANENT DEFORMATION, OR CORROSION TO PRIMARY STRUCTURE (REF. SRM CHAPTER 51); INITIATE A SERVICE DIFFICULTY REPORT (SDR) (REF. GMM, CHAPTERS 4, 12, AND 16) AND RECORD THE ASSOCIATED NON-ROUTINE NUMBERS BELOW.

*****END OF WORKCARD*****

25415405



NACELLE ATTACH FITTINGS