

**ATA AIRLINES, INC.**

CREW OXYGEN SYSTEM PRESSURE CYLINDER

PAGE 1 / 2

CHECK BEING PERFORMED: Custom

ZONES: 122 212  
A/C NUMBER:  
REV. DATE: 07/07/04  
FREQUENCY: 1A

W/C NUMBER: 290A3501      DATE:  
W/O:  
JAC CODE:

**PANELS**

821

**REFERENCES**

FIGURES 1 - 3, AMM 24-22-00-2, 35-11-00-2

**MECH      INSP**

CHECK CREW OXYGEN (HIGH) PRESSURE TRANSDUCER INDICATOR BY  
COMPARING CYLINDER PRESSURE GAUGE WITH FLIGHT DECK INDICATION.

CHECK CREW OXYGEN SYSTEM PRESSURE.

MPD ITEM: 35-11-00-A  
35-11-00-5A

1. Pressure Gage Test - Crew Oxygen Cylinder.

A. References.

- (1) AMM 35-11-00-2, Crew Oxygen System.
- (2) AMM 24-22-00-2, Electrical Power - Control.

B. Procedure.

WARNING: MAKE SURE YOU KNOW THE SAFETY PRECAUTIONS FOR THE  
GENERAL MAINTENANCE INSTRUCTIONS FOR THE CREW  
OXYGEN SYSTEM (AMM 35-11-00-2). PRESSURIZED OXYGEN  
CAN CAUSE INJURY OR DAMAGE IF THE SAFETY  
PRECUATIONS ARE NOT OBEYED.

- \_\_\_\_\_ XXXXX (1) Read the safety precautions and the general  
maintenance instructions for the crew oxygen system  
(AMM 35-11-00-2).
- \_\_\_\_\_ XXXXX (2) Make sure the shutoff valve on the crew oxygen  
cylinder is open.
- |\_\_\_\_\_ XXXXX (3) Supply electrical power (AMM 24-22-00-2).
- \_\_\_\_\_ XXXXX (4) Push the STATUS button on the EICAS DISPLAY select  
panel.

CREW OXYGEN SYSTEM PRESSURE CYLINDER

PAGE:2 /2

A/C NUMBER:

CHECK BEING PERFORMED: Cust

W/C NUMBER: 290A3501 (continued)

MECH: INSP:

---

(5) Do a check of the pressure gage on the crew oxygen cylinder (Fig. 1, 2, 3).

(a) Make sure the pressure shown on the EICAS display is within 100 psi of the pressure shown on the pressure gage.

\*\*\*\*\*END OF WORKCARD\*\*\*\*\*

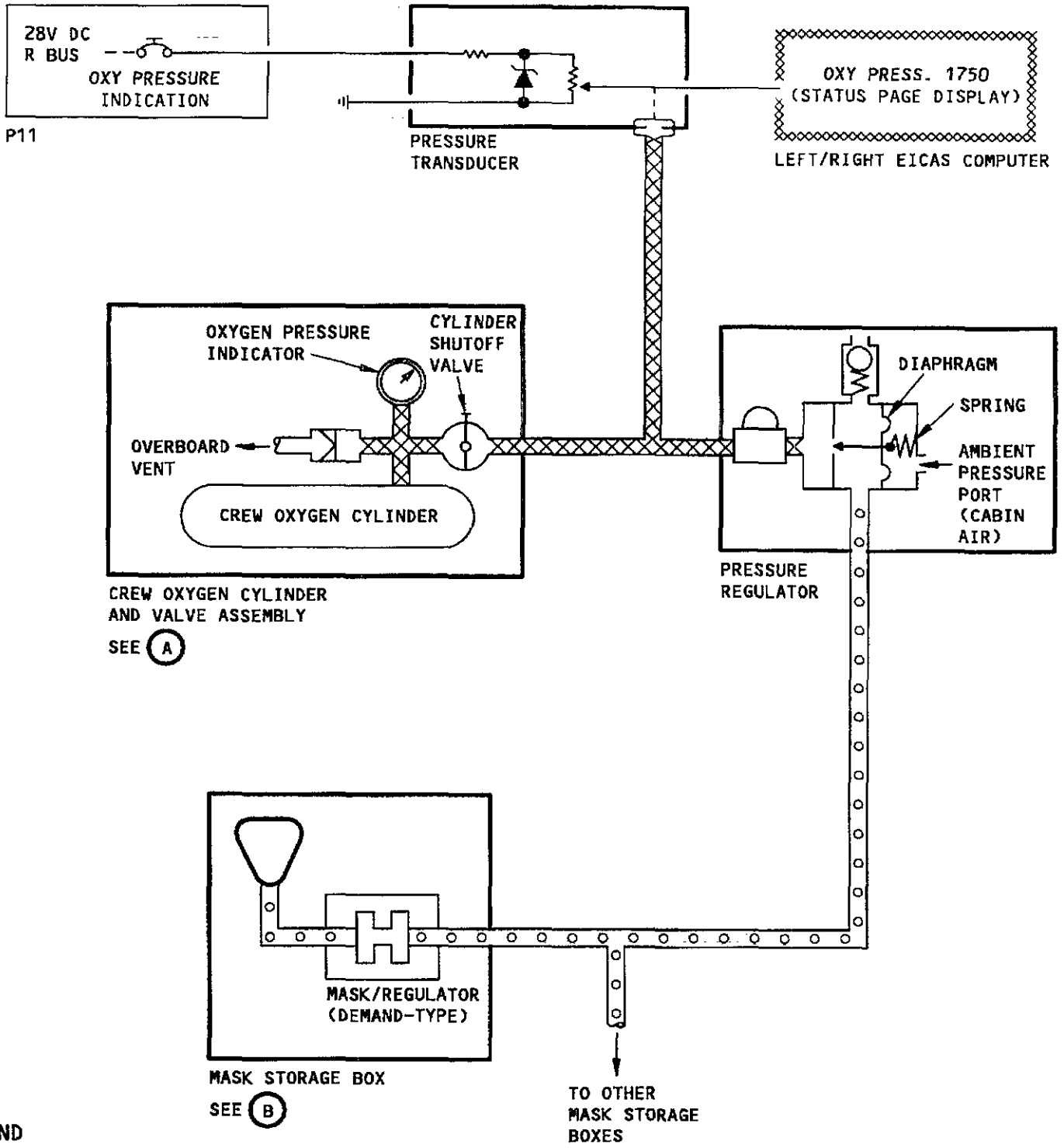
---

REVISION DATE: 07/07/04

ATA AIRLINES, INC. B757 FLEET

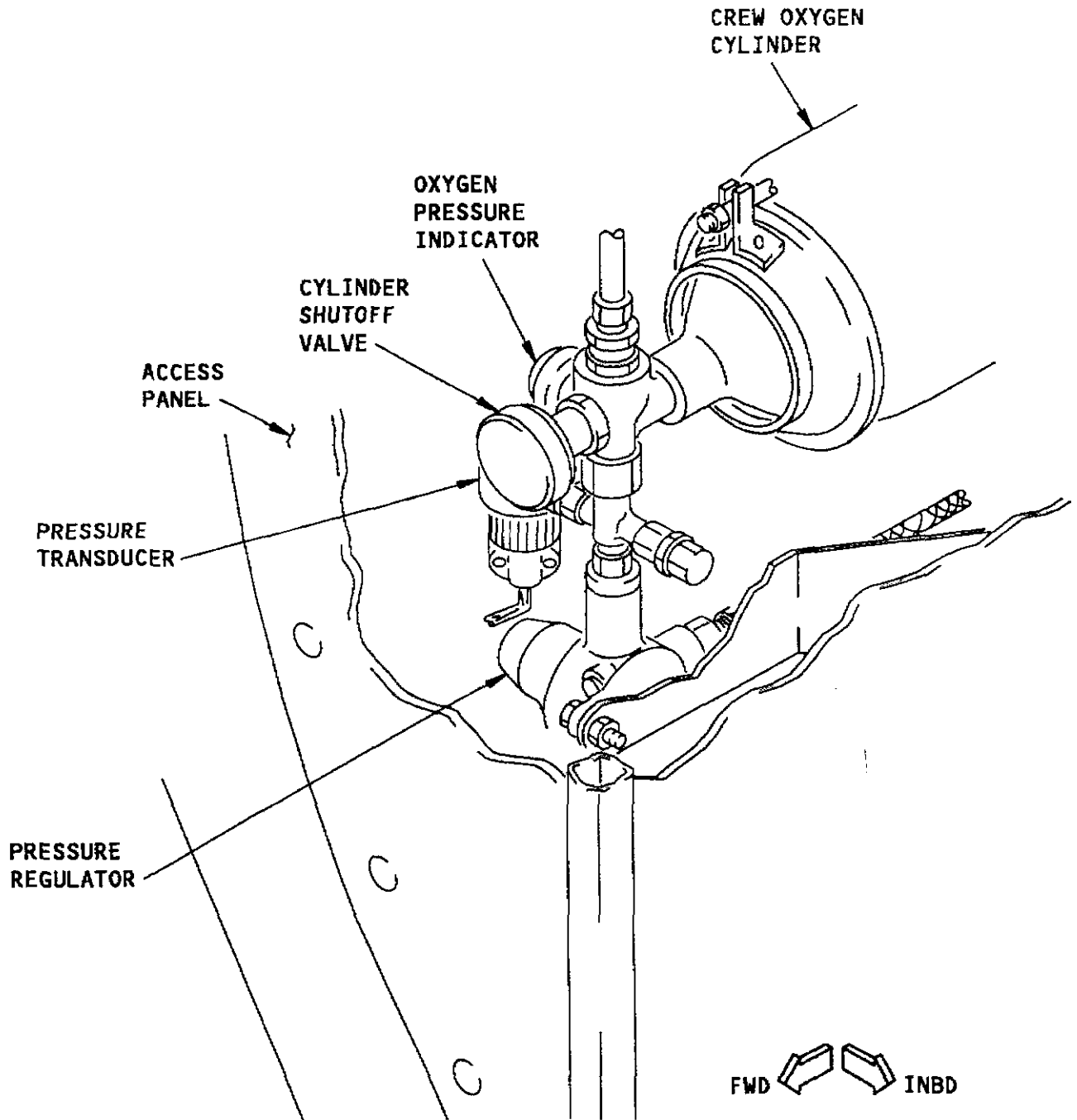
W/C #: 290A3501

DATE WORK CARD COMPLETE \_\_\_/\_\_\_/\_\_\_



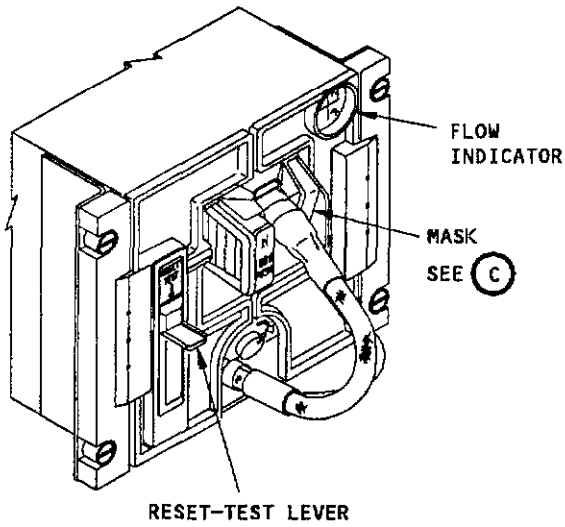
**LEGEND**  
 [Cross-hatched line] HIGH PRESSURE OXYGEN  
 [Line with circles] LOW PRESSURE OXYGEN

Crew Oxygen Flow Diagram



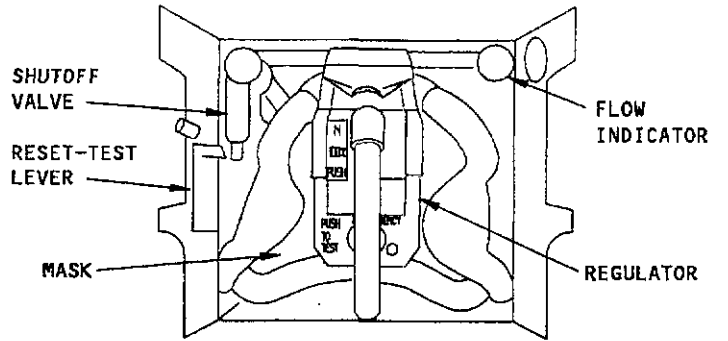
CREW OXYGEN CYLINDER AND VALVE ASSEMBLY

A



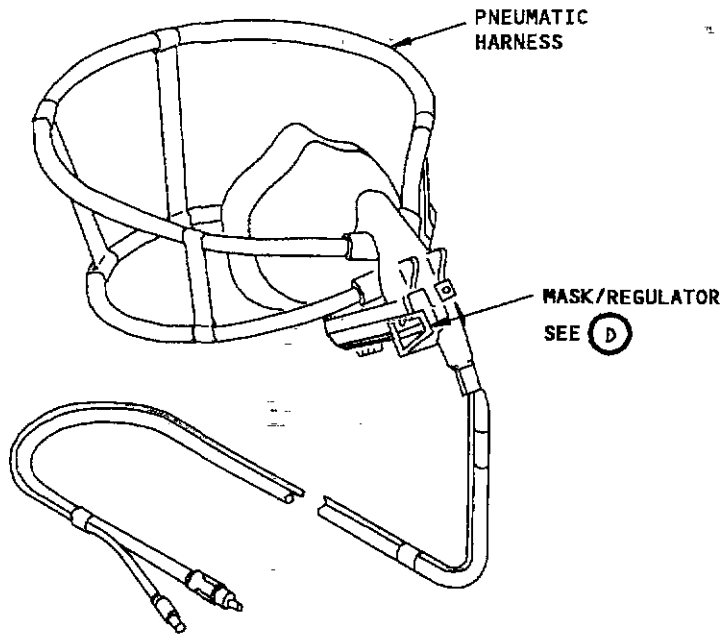
MASK STORAGE BOX (DOORS CLOSED)

(B)



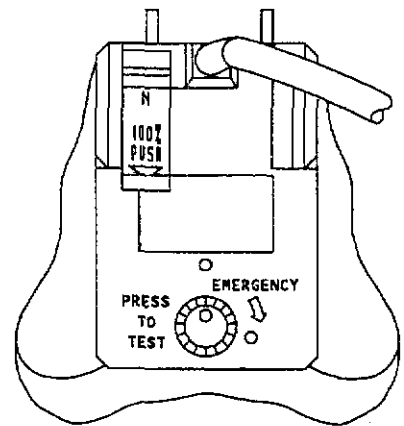
MASK STORAGE BOX (DOORS OPEN)

(B)



MASK (SHOWN INFLATED)

(C)



MASK/REGULATOR

(D)

Crew Oxygen Flow Diagram