

ATA AIRLINES, INC.

OPERATIONALLY CHECK VOICE RECORDER ULB AT BATTERY REPLACEMENT

PAGE 1 / 4

CHECK BEING PERFORMED: Custom

ZONES: 100
 A/C NUMBER:
 REV. DATE: 02/29/08
 FREQUENCY: 1C

W/C NUMBER: 312F2301 DATE:

MFR P/N	DESCRIPTION	QTY
COMMON	CLEANER, GENERAL PURPOSE	A/R
231-1	TAPE, MASKING	A/R
DK100	BEACON, UNDERWATER ACCOUSTIC	A/R

TOOLS	DESCRIPTION	QTY
42A12	Test Set -Ultrasonic	1

PANELS
 822

REFERENCES

Figure 1, AMM 23-71-11, 23-71-21

MECH INSP

MPD ITEM: 23-060-00, 23-070-00

REPLACE ULB BATTERY AND OPERATIONALLY CHECK THE ULB.

1. Access the CVR and ULB (Figure 1)

- | _____ XXXXX A. Open the access door on the voice recorder rack which is located in the aft cargo compartment right side.

- | _____ XXXXX B. Check the expiration date of the CVR ULB and calculate the next projected inspection date to be used for this inspection.
 - | (1) Current Month and Year _____ plus (+) Maintenance Program Limit {3 months} equals (=):
 - | Next projected inspection date: _____
 - | (2) Record the following data:
 - | (a) MFG P/N _____ S/N _____
 - | (b) Expiration Date: _____

- | _____ XXXXX C. If expiration date occurs on or before the next projected inspection date, as determined in step 1.B(1) above, replace the ULB per step 2. and test per step 3. below. If expiration date occurs after the next projected inspection date, mark steps 2. and 3. below "N/A" and proceed to ULB operational test step 4. below.
 - | Example: If todays date were 11/08 (+) 3 months (=) a next projected inspection date of 02/09. If

A/C NUMBER:

CHECK BEING PERFORMED: Cust

W/C NUMBER: 312F2301 (continued)

MECH: INSP:

| the expiration date recorded in step 1.B.(2)(b)
| occurs prior to this date (02/09), replace the
| ULB.

_____ XXXXX 2. Underwater Locator Beacon (ULB) Removal (Fig. 1)

A. Removal Procedure

(1) Do this task: Voice Recorder Removal

(AMM 23-71-11-4)

(2) Remove the ULB [4] from the voice recorder:

(a) Loosen the four screws [1] that hold the ULB [4].

(b) Remove the two screws [1] and the clamp from one end of the ULB.

(c) Remove the ULB [4].

(d) Keep the screws [1] and the clamp.

(3) Tag the removed ULB and route to stores.

_____ XXXXX 3. Underwater Locator Beacon (ULB) Installation (Fig. 1)

A. Installation Procedure

(1) Install the ULB [4] on the voice recorder:

(a) Make sure that the water switch end of the ULB [4] has no grease or dirt.

(1) Clean the water switch with a weak cleaner, general purpose household detergent.

(b) Put the ULB [4] into the bracket.

(c) Install the clamp on the end of the ULB [4] with the two screws [1].

(d) Make sure that you can read the replacement date on the ULB [4].

(e) Tighten the four screws [1].

A/C NUMBER:

CHECK BEING PERFORMED: Cust

W/C NUMBER: 312F2301 (continued)

MECH: INSP:

XXXXX 4. Underwater Locator Beacon Test with a 42A12 Series Test Set
(AMM 23-71-21-2)

A. Procedure

(1) Using test set, 42A12 SERIES, do this test of the
ULB [4]:

(a) Put the test set, 42A12 SERIES approximately 3
feet from the ULB [4].

(b) Set the OFF-GAIN control on the test set, 42A12
SERIES to the middle position.

(c) Set the TUNING control knob to 37+/-1 kHz.

(d) Set the input selector switch to the INT
position.

(e) Make sure that the test set, 42A12 SERIES
operates correctly.

1) Shake a set of keys or coins in front of the
microphone on the test set, 42A12 SERIES.

NOTE: This will supply ultrasonic sound.

a) Make sure that you hear sounds through the
speaker or headset.

(f) Use tape, 3M #250 (A-A-883) to attach a piece of
wire or other conductive material to the ULB [4]
case and the center of the water switch.

NOTE: This will make a short circuit from the
center of the water switch to the outer
part of the ULB [4].

1) Make sure that you hear a pulsed tone at
1-second intervals.

(g) Remove the piece of wire or other conductive
material from the ULB [4] case and the center of
the water switch.

1) Make sure that you do not hear a pulsed tone.

A/C NUMBER:

CHECK BEING PERFORMED: Cust

W/C NUMBER: 312F2301 (continued)

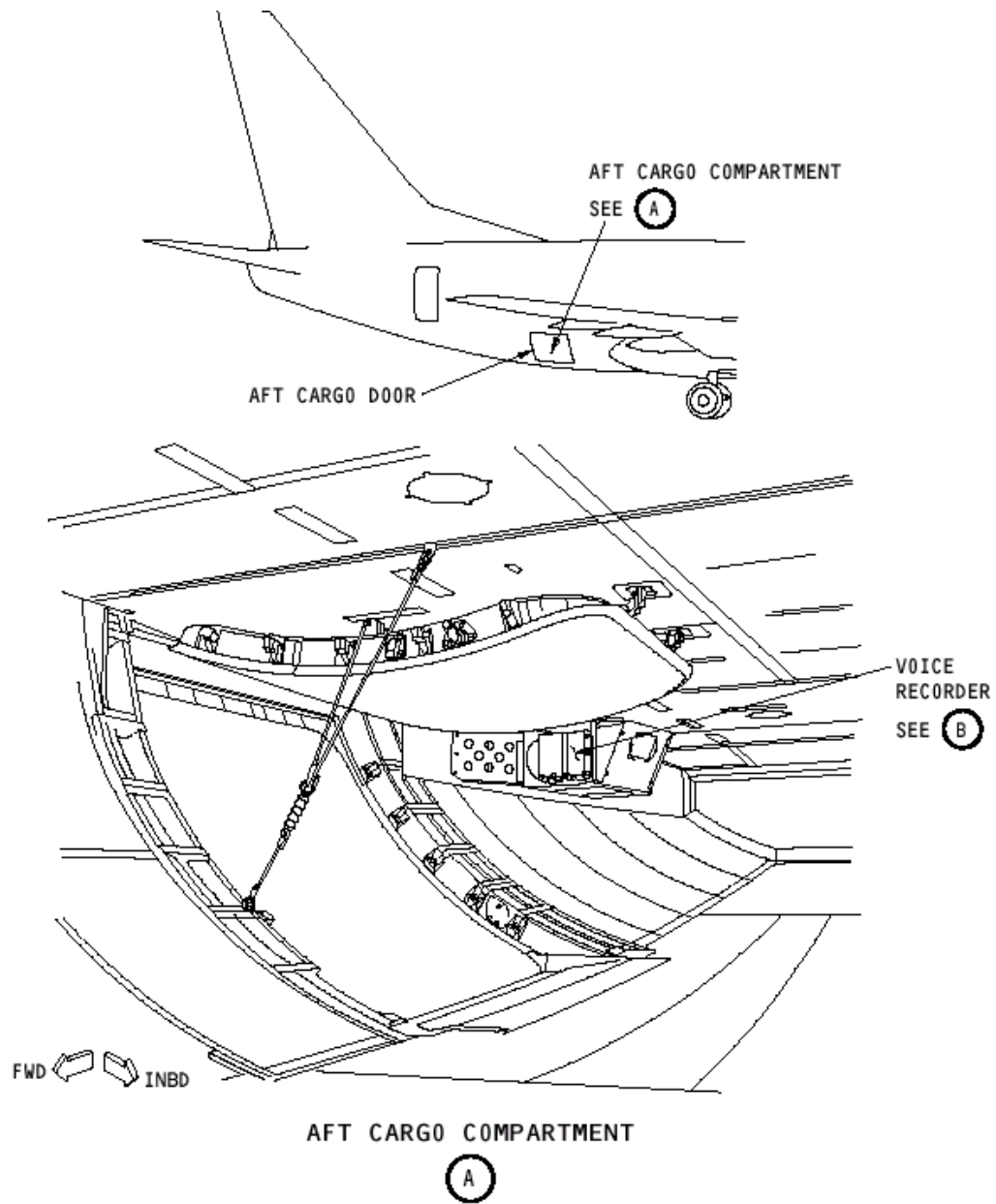
MECH: INSP:

(h) Set the OFF-GAIN control switch to the OFF position.

(i) Make sure that the water switch end of the ULB [4] has no grease or dirt.

1) If necessary, clean the water switch with a weak cleaner, general purpose household detergent.

***** END OF WORKCARD *****

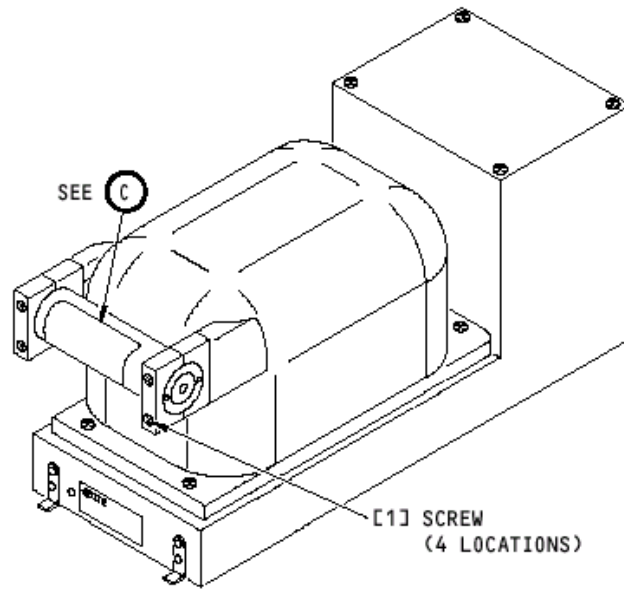


Underwater Locator Beacon Installation

OPERATIONALLY CHECK
VOICE RECORDER ULB /
BATTERY REPLACEMENT

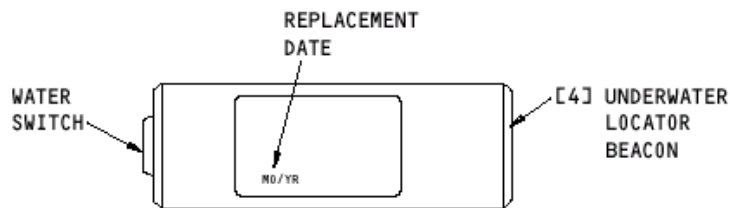
FIGURE 1
SHEET 1 OF 2

10/30/2001



VOICE RECORDER

(B)



UNDERWATER LOCATOR BEACON

(C)

Underwater Locator Beacon Installation