

ATA AIRLINES, INC.

FORWARD RUDDER MECHANICAL CONTROL PATH

PAGE 1 / 1

CHECK BEING PERFORMED: Custom

ZONES: 100
A/C NUMBER:
REV. DATE: 06/26/06
FREQUENCY: 1C

W/C NUMBER: 314I2702 DATE:

PANELS

112A

REFERENCES

FIGURE 1

MECH INSP

MPD Item: 27-038-00

GENERAL VISUAL INSPECTION OF THE RUDDER FORWARD MECHANICAL CONTROL PATH.

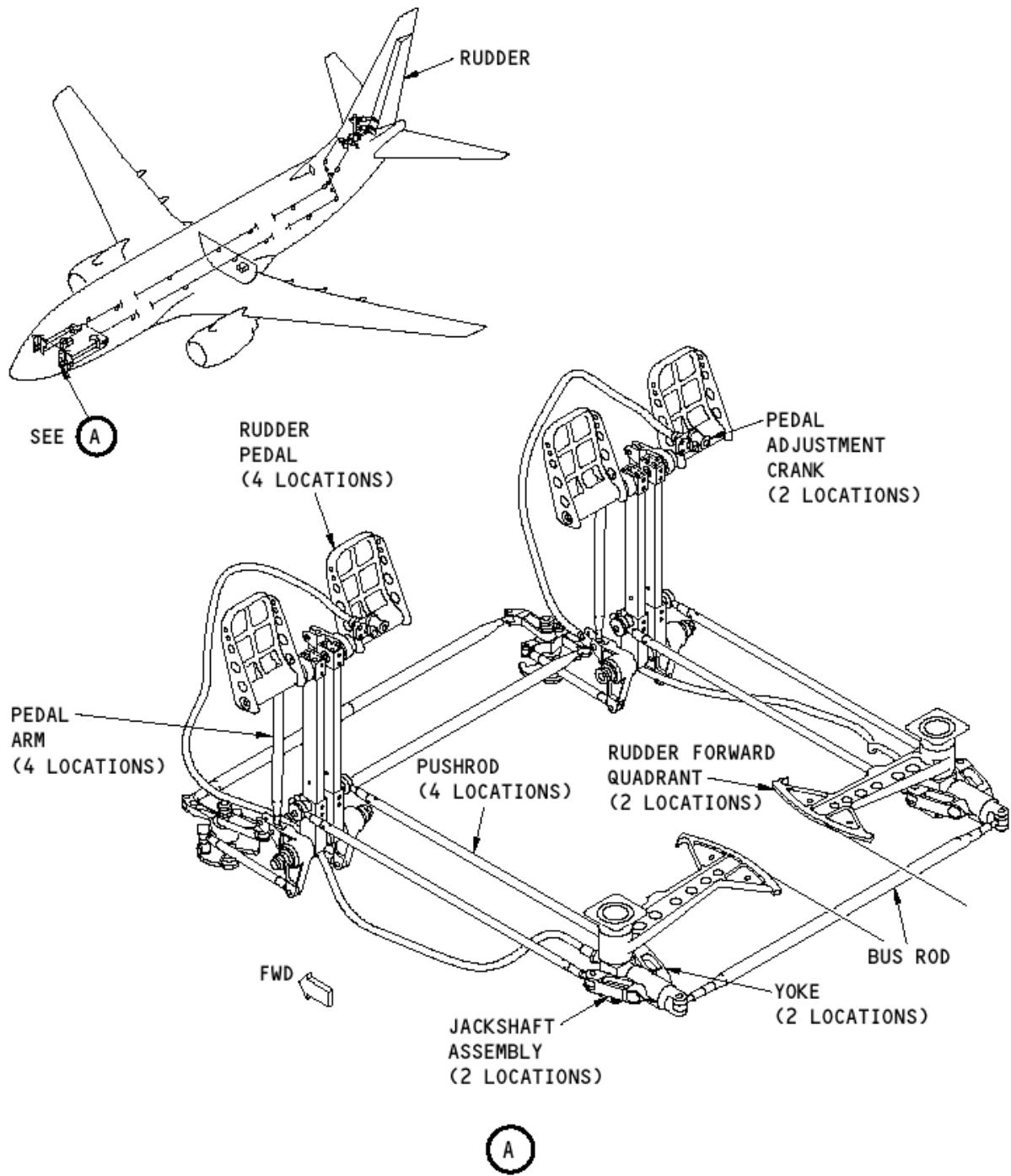
1. Rudder Mechanical Control Path Inspection (Figure 1).

A. Procedure

|XXXXX _____ (1) Do a general visual inspection of the rudder mechanical control path.

NOTE: The phrase "mechanical control path" is not intended to include cables, but only those components/assemblies required to initiate and terminate action.

*****END OF WORKCARD*****



Forward Rudder
Mechanical Control Path

FIGURE 1