

ATA AIRLINES, INC.

ELEVATOR RANGE OF TRAVEL

PAGE 1 / 2

CHECK BEING PERFORMED: Custom

ZONES: 200
A/C NUMBER:
REV. DATE: 01/23/06
FREQUENCY: 1C

W/C NUMBER: 321F2704 DATE:

TOOLS	DESCRIPTION	QTY
F80055-1	Trammel Bar Assembly - Stabilizer Trim Actuator	1

PANELS
311BL

REFERENCES

FIGURES 1 AND 2, AMM 27-31-00

MECH INSP

MPD Item: 27-074-00

OPERATIONALLY CHECK, HYDRAULIC POWER OFF, THE ELEVATOR CONTROL SURFACES FOR FULL RANGE OF TRAVEL AND FREEDOM OF MOVEMENT.

1. Manual Mode Test (Figure 1).

_____ XXXXX A. Prepare for the Test

- (1) Do this task: Remove Pressure from the Elevator Hydraulic Systems A and B (AMM TASK 27-31-00-800-802 p201).
- (2) Open the Access Door to Aft Unpressurized Compartment, 311BL.
- (3) Use the bar, F80055-1 to set the "B" dimension at 4 units of trim - (39.89 +/- 0.05 inches or 1013.21 +/- 1.27 millimeters) (Figure 2).

_____ XXXXX B. Manual Mode Test

- (1) Do the manual mode test:
 - (a) Make sure the control columns and control wheels move freely:
 - 1) Move the control column in a longitudinal direction (forward and aft) ten times and at the same time move the control wheel between the left and right stops.
 - 2) Hold the control wheel left against the stop and move the control column in a

REVISION DATE: 01/23/06 ATA AIRLINES, INC. B737-800 FLEET W/C #: 321F2704

DATE WORK CARD COMPLETE ___/___/___

A/C NUMBER:

CHECK BEING PERFORMED: Cust

W/C NUMBER: 321F2704 (continued)

MECH: INSP:

longitudinal direction (forward and aft) between the stops.

3) Hold control wheel right against the stop and move the control column in a longitudinal direction (forward and aft) between the stops.

4) Hold the control column forward and move the control wheel left and right between the stops.

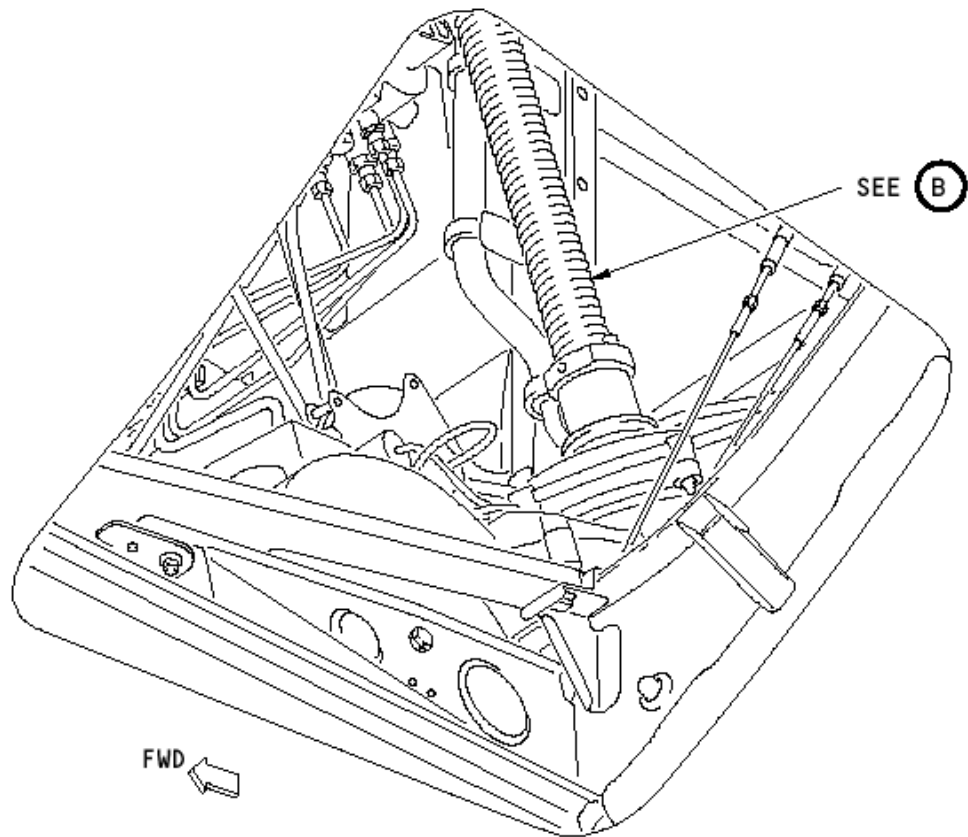
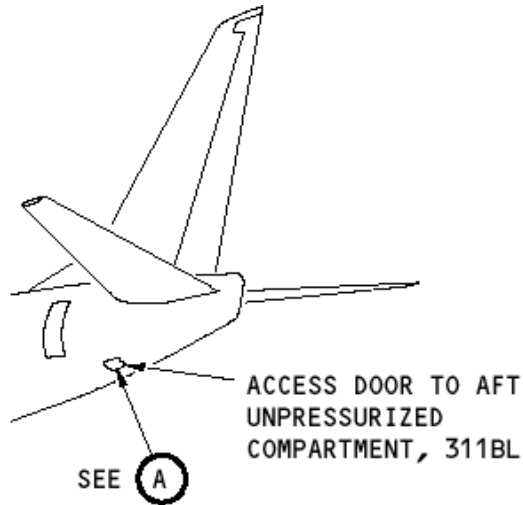
5) Hold the control column aft and move the control wheel left and right between the stops.

_____ XXXXX C. Put the Airplane Back to Its Usual Condition

(1) Do this task: Put the Elevator Systems A and B Back to the Condition Before the Pressure Removal (AMM TASK 27-31-00-840-802 p201).

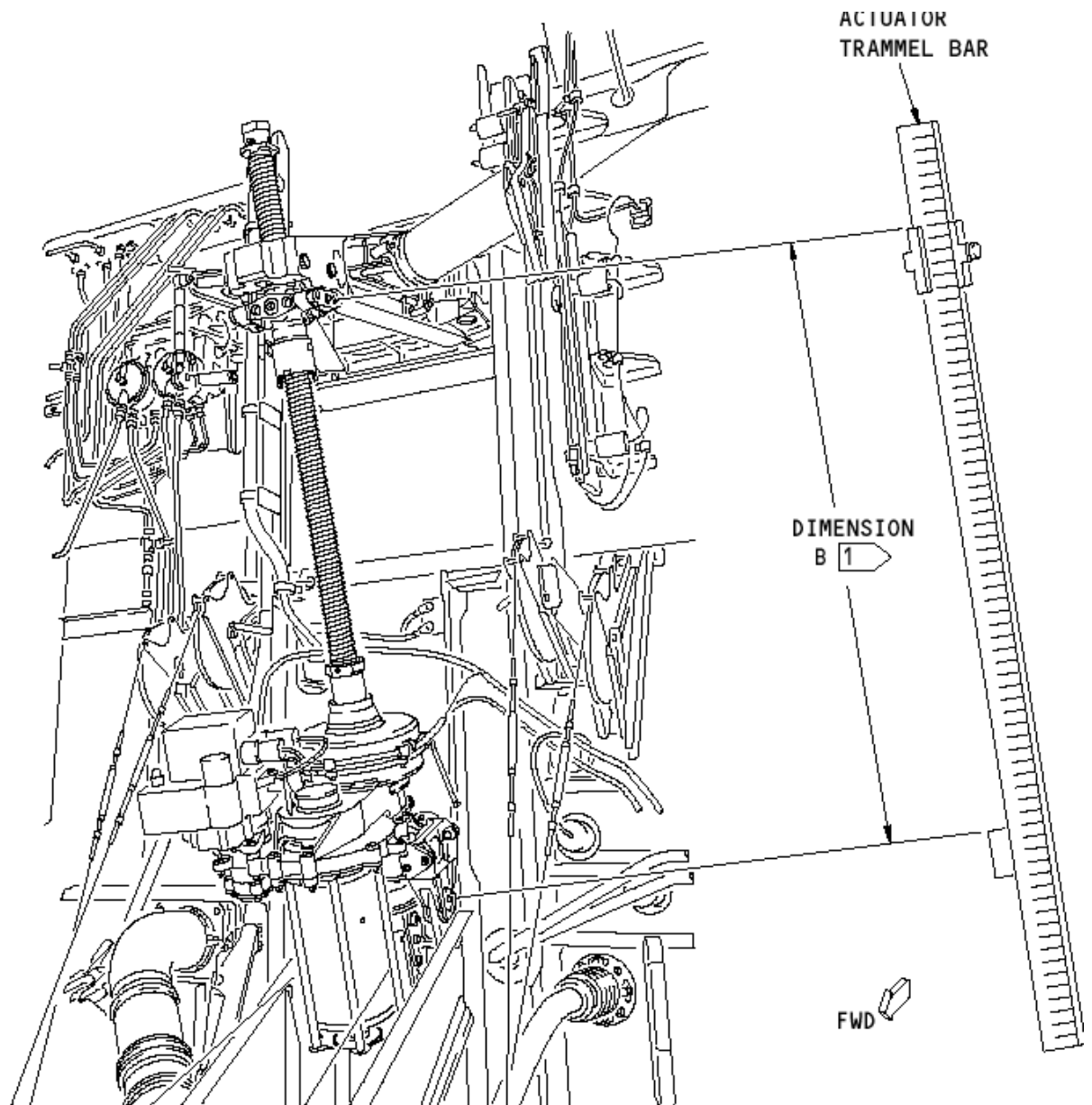
(2) Close the Access Door to Aft Unpressurized Compartment, 311BL.

*****END OF WORKCARD*****



VIEW THROUGH THE ACCESS DOOR TO
AFT UNPRESSURIZED COMPARTMENT, 311BL

(A)



STABILIZER TRIM ACTUATOR

(B)

NOTE: THE STABILIZER TRIM JACKSCREW IS SHOWN WITH THE STABILIZER LEADING EDGE AT ZERO DEGREES.

1 THE DIMENSION B IS MEASURED BETWEEN THE CENTER OF THE UPPER AND LOWER GIMBAL PINS, (CENTER OF GREASE FITTINGS).