

ATA AIRLINES, INC.

OPERATIONALLY CHECK DFDR ULB AT BATTERY REPLACEMENT

PAGE 1 / 4

CHECK BEING PERFORMED: Custom

ZONES: 240
A/C NUMBER:
REV. DATE: 02/01/07
FREQUENCY: 1C

W/C NUMBER: 322F3102 DATE:

Table with 3 columns: MFR P/N, DESCRIPTION, QTY. Rows include COMMON CLEANER, 231-1 TAPE, and DK100 BEAKON.

Table with 3 columns: TOOLS, DESCRIPTION, QTY. Row includes 42A12 SERIES TEST SET - ULTRASONIC with quantity 1.

REFERENCES

Figure 1 ; AMM 31-31-11, 31-31-09

MECH INSP

MPD ITEMS: 31-140-00, 31-150-00

REPLACE ULB BATTERY AND OPERATIONALLY CHECK THE ULB.

1. Access the DFDR and ULB (Figure 1)

XXXXX A. To get access to the Flight Data Recorder in the aft passenger compartment, open the lowered ceiling panel.

XXXXX B. Check the expiration date of the DFDR ULB and calculate the next projected inspection date to be used for this inspection.

1. Current Month and Year _____ plus (+) 3 MONTHS (Maintenance Program Limit) equals (=):

Next projected inspection date: _____

2. Record the following data:

a. MFG P/N _____ S/N _____

b. Expiration Date: _____

XXXXX C. If expiration date occurs on or before the next projected inspection date, as determined in step 1.B.1 above, replace the ULB per step 2 and test per step 3 below. If expiration date occurs after the next projected inspection date, mark steps 2 and 3 below "N/A" and proceed to ULB operational test step 4 below.

Example: If todays date were 11/2006 (+) 3 months (=) a next projected inspection date of 02/2007. If

A/C NUMBER:

CHECK BEING PERFORMED: Cust

W/C NUMBER: 322F3102 (continued)

MECH: INSP:

| the expiration date recorded in step 1.B.2.b
| occurs prior to this date (02/2007), replace the
| ULB.

_____ XXXXX 2. Underwater Locator Beacon (ULB) Removal (Fig. 1)

A. Removal Procedure

- (1) Do this task: Flight Data Recorder Removal
(AMM TASK 31-31-11-000-801 p401)
- (2) Remove the ULB [6] from the flight data recorder:
 - (a) Loosen the four screws [3] that hold the ULB [6].
 - (b) Remove the two screws [3] and the clamp from one end of the ULB.
 - (c) Remove the ULB [6].
 - (d) Keep the screws [3] and the clamp.
- (3) Tag the removed ULB and route to stores.

_____ XXXXX 3. Underwater Locator Beacon (ULB) Installation (Fig. 1)

A. Installation Procedure

- (1) Install the ULB [6] on the Flight Data Recorder:
 - (a) Make sure that the water switch end of the ULB [4] has no grease or dirt.
 - (1) Clean the water switch with a weak cleaner, general purpose household detergent.
 - (b) Put the ULB [6] into the bracket.
 - (c) Install the clamp on the end of the ULB [6] with the two screws [3].
 - (d) Make sure that you can read the replacement date on the ULB [6].

A/C NUMBER:

CHECK BEING PERFORMED: Cust

W/C NUMBER: 322F3102 (continued)

MECH: INSP:

(e) Tighten the four screws [3].

_____ XXXXX 4. Underwater Locator Beacon Test with a 42A12 Series Test Set

A. Procedure

(1) Using test set, 42A12 SERIES, do this test of the ULB [6]:

(a) Put the test set, 42A12 SERIES approximately 3 feet from the ULB [6].

(b) Set the OFF-GAIN control on the test set, 42A12 SERIES to the middle position.

(c) Set the TUNING control knob to 37+/-1 kHz.

(d) Set the input selector switch to the INT position.

(e) Make sure that the test set, 42A12 SERIES operates correctly.

1) Shake a set of keys or coins in front of the microphone on the test set, 42A12 SERIES.

NOTE: This will supply ultrasonic sound.

a) Make sure that you hear sounds through the speaker or headset.

(f) Use tape, 3M #250 (A-A-883) to attach a piece of wire or other conductive material to the ULB [6] case and the center of the water switch.

NOTE: This will make a short circuit from the center of the water switch to the outer part of the ULB [6].

1) Make sure that you hear a pulsed tone at 1-second intervals.

A/C NUMBER:

CHECK BEING PERFORMED: Cust

W/C NUMBER: 322F3102 (continued)

MECH: INSP:

(g) Remove the piece of wire or other conductive material from the ULB [6] case and the center of the water switch.

1) Make sure that you do not hear a pulsed tone.

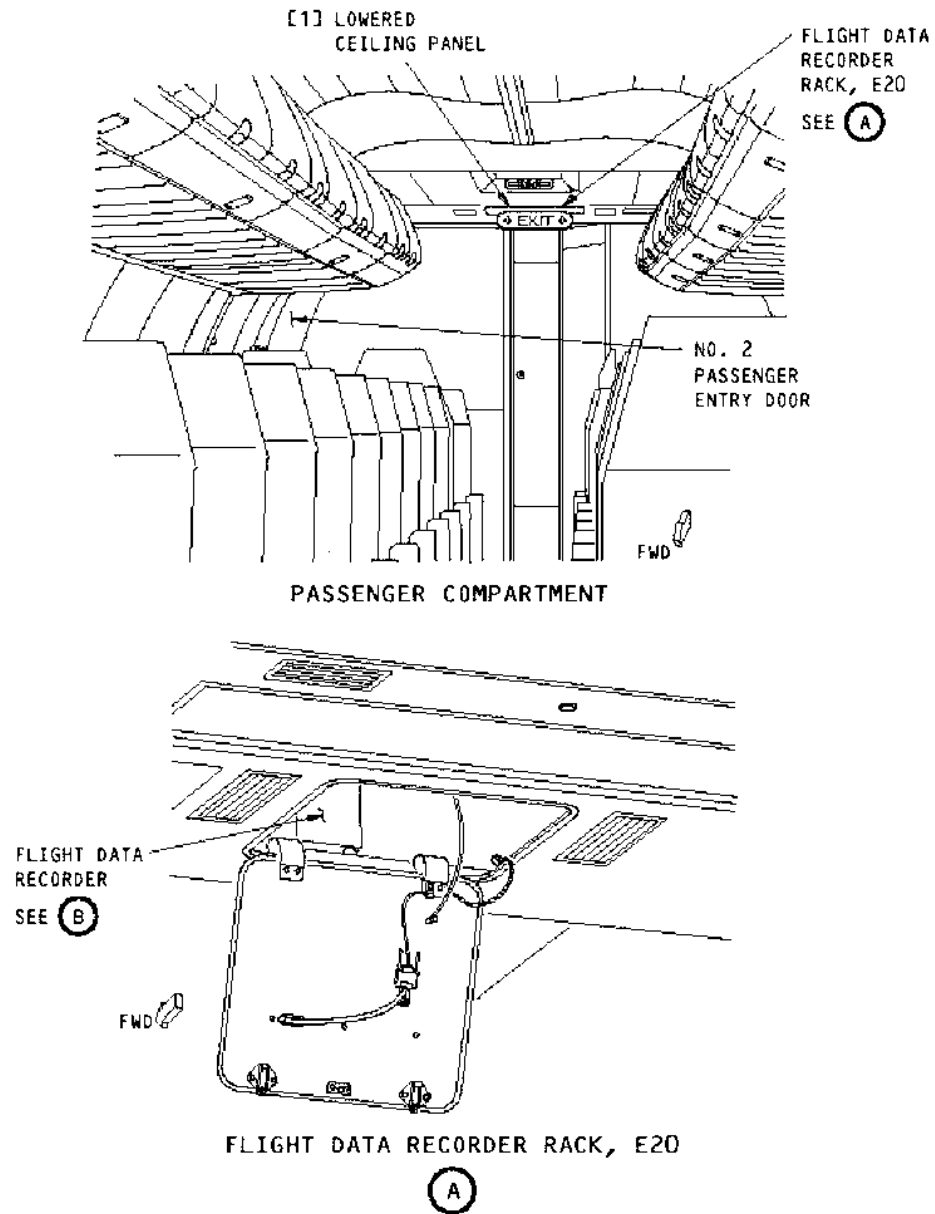
(h) Set the OFF-GAIN control switch to the OFF position.

(i) Make sure that the water switch end of the ULB [6] has no grease or dirt.

1) If necessary, clean the water switch with a weak cleaner, general purpose household detergent.

_____ XXXXX 5. Close the lowered ceiling panel.

***** END OF WORKCARD *****

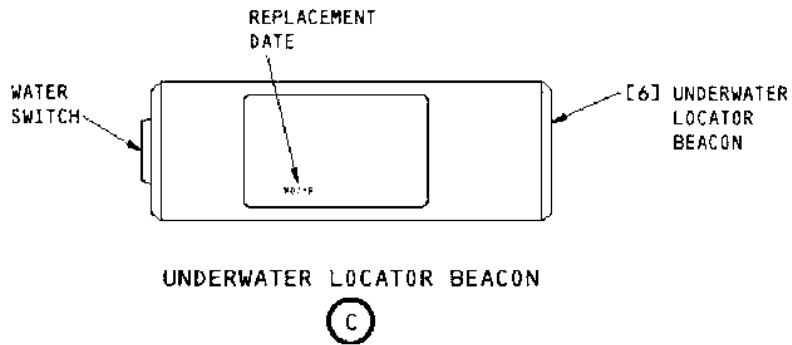
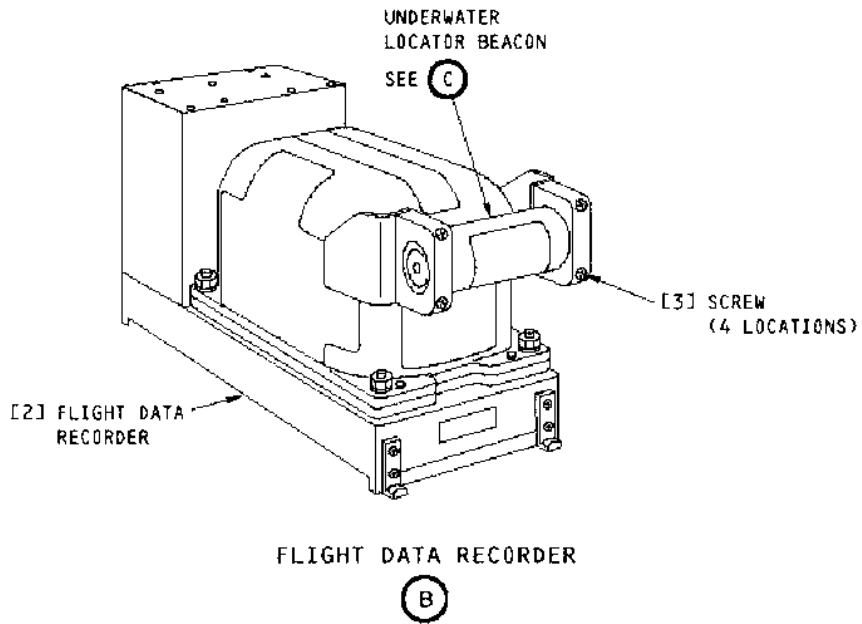


Underwater Locator Beacon Installation

OPERATIONALLY CHECK
DFDR ULB / BATTERY
REPLACEMENT

FIGURE 1
SHEET 1 OF 2

10/30/2001



Underwater Locator Beacon Installation