

ATA AIRLINES, INC.

DISCARD RIGHT ENGINE IGNITER PLUGS

PAGE 1 / 5

CHECK BEING PERFORMED: Custom

ZONES: 400
A/C NUMBER:
REV. DATE: 07/01/04
FREQUENCY: 4A

W/C NUMBER: 342R7401 DATE:

MFR P/N	DESCRIPTION	QTY
CH31900	Igniter-Spark Main	2
9048156	Seal-Outer	2
A50TF54CLA	Oil, Penetrating	A/R
MILT5544C	Grease, Graphite	A/R

TOOLS	DESCRIPTION	QTY
Drift	Drift, Plastic (0.375" Dia. Max.)	1
Wrench	Wrench, Torque (30-300 Pound-Inches)	1

PANELS

423	425
424	426

REFERENCES

Figure 1; AMM 71-00-00, 78-31-00

MECH INSP

MPD Item: 74-010-02

XXXXX 1. Prepare for replacement of #2 Engine Main Igniter Plugs.

A. Open these circuit breakers and attach DO-NOT-CLOSE tags:

(1) Circuit Breaker Panel P6-2:

(a) 6D4 ENGINE 2 IGNITION RIGHT

(b) 6D6 ENGINE 2 IGNITION LEFT

B. Make sure the #2 start lever is in the CUTOFF position and install a DO-NOT-OPERATE tag.

C. Make sure the #2 engine start switch is off and install a DO-NOT-OPERATE tag.

WARNING: DO THESE SPECIFIED TASKS IN THE CORRECT SEQUENCE BEFORE YOU OPEN THE THRUST REVERSER: RETRACT THE LEADING EDGE, DO THE DEACTIVATION PROCEDURES FOR THE LEADING EDGE AND THE THRUST REVERSER (FOR GROUND MAINTENANCE), AND OPEN THE FAN COWL PANELS. IF YOU DO NOT OBEY THE ABOVE SEQUENCE, INJURIES TO PERSONS AND DAMAGE TO EQUIPMENT CAN OCCUR.

D. Do This Task: Open the Thrust Reverser (Selection)

REVISION DATE: 07/01/04

ATA AIRLINES, INC. B737-800 FLEET

W/C #: 342R7401

DATE WORK CARD COMPLETE ___/___/___

(AMM TASK 78-31-00-010-801-F00 p201).

2. Remove #2 Engine Main Igniter Plugs as follows (Fig. 1):

WARNING: MAKE SURE THE IGNITION SYSTEM IS DE-ENERGIZED BEFORE YOU START TO WORK ON THE MAIN IGNITER PLUG. THE IGNITION SYSTEM VOLTAGE IS DANGEROUSLY HIGH. DO NOT TOUCH THE IGNITION COMPONENTS UNTIL YOU DO THE PROCEDURE THAT FOLLOWS. THIS PROCEDURE WILL RELEASE THE HIGH VOLTAGE FROM THE IGNITION LEAD. IF YOU DO NOT OBEY THIS PROCEDURE, INJURY TO PERSONS CAN OCCUR.

CAUTION: MAKE SURE THAT YOUR HANDS AND TOOLS ARE CLEAN. DO NOT TOUCH THE IGNITION LEAD OR THE MAIN IGNITER PLUG WITH DIRT OR GREASE ON HANDS OR TOOLS. DIRT AND GREASE WILL CAUSE DAMAGE TO THE IGNITION LEAD AND THE MAIN IGNITER PLUG.

- A. To release the high voltage from the ignition system, Stop (wait) for a minimum of two minutes.
- B. Do these steps to disconnect the ignition lead [4] from the igniter plug [6]:

(1) Remove the cooling shroud clamp [2].

(a) Remove the top and bottom cooling shroud [1].

CAUTION: MAKE SURE THAT THE HINGE CLAMP NEAREST TO THE MAIN IGNITER PLUG IS LOOSE OR REMOVED BEFORE YOU REMOVE THE IGNITION LEAD FROM THE MAIN IGNITER PLUG. THIS WILL PREVENT DAMAGE TO THE IGNITION LEAD AND THE MAIN IGNITER PLUG.

(2) Loosen the coupling nut [3] to disconnect the ignition lead [4] from the main igniter plug [6].

CAUTION: DO NOT TWIST OR BEND THE IGNITION LEAD. YOU CAN CAUSE DAMAGE TO THE CONDUIT AND THE INTERNAL WIRES.

(3) Pull the ignition lead [4] straight out until it is free from the main igniter plug [6].

A/C NUMBER:

CHECK BEING PERFORMED: Cust

W/C NUMBER: 342R7401 (continued)

MECH: INSP:

(4) Remove the outer silicone seal [5].

(a) Discard the outer silicone seal.

(5) Put a protective cover on the ignition lead [4].

C. Do these steps to remove the main igniter plug [6]:

(1) Hold the igniter bushing.

(2) Remove the main igniter plug [6] from the igniter bushing.

(3) Make sure you remove the captive washer with the main igniter plug [6].

XXXXX D. Remove Left Main Igniter Plug.

XXXXX E. Remove Right Main Igniter Plug.

3. Replace #2 Engine Main Igniter Plugs as follows (Fig. 1):

CAUTION: ALIGN THE COMBUSTION CHAMBER FERRULE WITH THE IGNITER BOSS BEFORE YOU INSTALL THE MAIN IGNITER PLUG. IF NOT, DAMAGE TO THE MAIN IGNITER PLUG CAN OCCUR.

A. Do these steps to align the combustion chamber ferrule with the igniter boss:

(1) Put a plastic drift pin through the igniter bushing on the combustion case and the combustion chamber ferrule.

NOTE: The ferrule is on the combustion chamber in the engine. The combustion chamber ferrule floats on the combustion chamber. It can become out of line with the igniter bushing.

NOTE: The plastic drift should have a maximum diameter of 0.375 inch.

(2) Align the combustion chamber ferrule and the igniter bushing with the plastic drift.

NOTE: If the combustion chamber ferrule is difficult to move, apply oil, A50TF54CLA, to it.

B. Do these steps to install the main igniter plug [6]:

CAUTION: MAKE SURE THAT YOUR HANDS AND TOOLS ARE CLEAN. DO NOT TOUCH THE IGNITION LEAD OR THE MAIN IGNITER PLUG WITH DIRT OR GREASE ON HANDS OR TOOLS. DIRT AND GREASE WILL CAUSE DAMAGE TO THE IGNITION LEAD AND THE MAIN IGNITER PLUG.

(1) Apply a small amount of grease, MILT5544C, to the threads on the combustion-case-side of the main igniter plug [6].

(2) Install the main igniter plug [6] into the igniter bushing.

(a) Hold the igniter bushing.

(b) Tighten the main igniter plug [6] to 261-288 pound-inches.

C. Do these steps to connect the ignition lead [4] to the main igniter plug [6]:

CAUTION: DO NOT APPLY GREASE OR LUBRICANT TO THE THREADS OF THE CONNECTOR ON THE IGNITION LEAD. GREASE OR LUBRICANTS WILL CAUSE DAMAGE TO THE IGNITION LEAD AND MAIN IGNITER PLUG.

(1) Remove the protective cover from the ignition lead [4]

(2) Install the outer silicone seal [5].

(3) Install the ignition lead [4] into the main igniter plug [6].

(a) Tighten the coupling nut [3] to 260-290 pound-inches.

D. Tighten the hinge clamp on the ignition lead nearest to the main igniter plug that was previously loosened or removed.

A/C NUMBER:

CHECK BEING PERFORMED: Cust

W/C NUMBER: 342R7401 (continued)

MECH: INSP:

| E. Do these steps to install the cooling shroud [1] to the ignition lead [4]:

| (1) Install the top and bottom cooling shroud [1] on the flange of the ignition lead [4] with the cooling shroud clamp [2].

| (2) Tighten the cooling shroud clamp [2] to 33-37 pound-inches.

|_____ XXXXX F. Install Left Main Igniter Plug.

|_____ XXXXX G. Install Right Main Igniter Plug.

3. Put the Airplane Back to its Usual Condition.

WARNING: OBEY THE INSTRUCTIONS IN THE PROCEDURE TO CLOSE THE THRUST REVERSERS. IF YOU DO NOT OBEY THE INSTRUCTIONS, INJURIES TO PERSONS AND DAMAGE TO EQUIPMENT CAN OCCUR.

_____ XXXXX A. Do This Task: Close the Thrust Reverser (Selection) (AMM TASK 78-31-00-010-804-F00 p201).

B. Remove the DO-NOT-CLOSE tags and close these circuit breakers:

| (1) Circuit Breaker Panel P6-2:

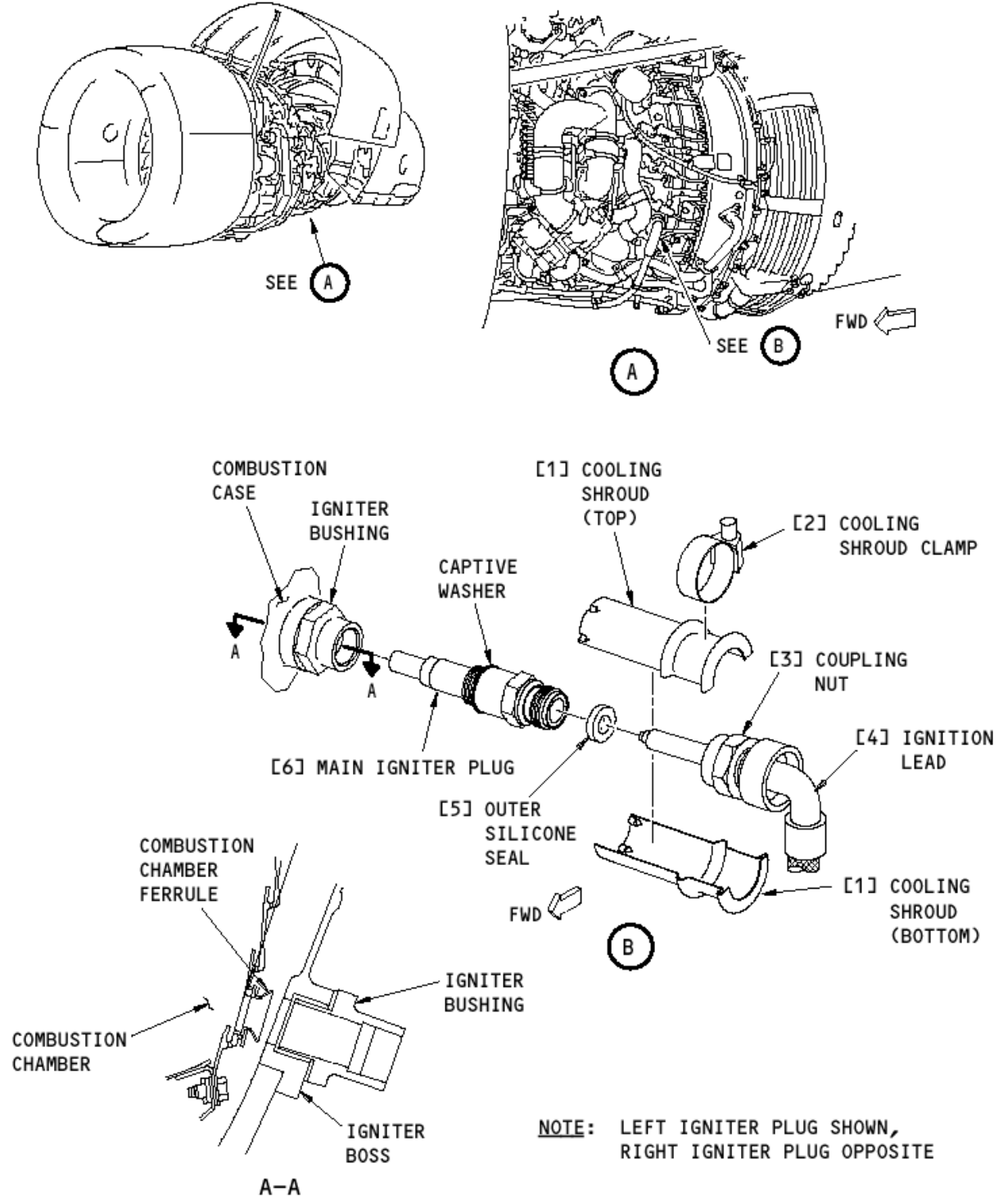
| (a) 6D4 ENGINE 2 IGNITION RIGHT

| (b) 6D6 ENGINE 2 IGNITION LEFT

C. Remove the DO-NOT-OPERATE tags from the #2 engine start lever and engine start switch.

_____ XXXXX D. Do the tests that are listed for the igniter plug in the Power Plant Reference Table (AMM TASK 71-00-00-800-811-F00 p501).

*****END OF WORKCARD*****



Engine Main Igniter Plug

FIGURE 1