

# ATA AIRLINES, INC.

DISCARD APU IGNITOR PLUG

PAGE 1 / 4

CHECK BEING PERFORMED: Custom

ZONES: 315 316  
A/C NUMBER:  
REV. DATE: 05/26/06  
FREQUENCY: 4A

W/C NUMBER: 345R4901 DATE:

MFR P/N	DESCRIPTION	QTY
305766-1	Igniter Plug	1
M677	Gasket	1
NSBT8N	Compound, Pure Nickel Special, Never-Seez	A/R

## PANELS

315A

## REFERENCES

FIGURE 1, AMM 49-11-00, 49-41-51

MECH INSP

MPD Item: 49-132-00

DISCARD THE APU IGNITOR PLUG.

NOTE: Work with Workcard 345I4901 if issued.

1. Igniter Plug Removal (Figure 1).

XXXXX A. Prepare for the Removal

(1) Make sure the APU master switch on the P5 forward overhead panel is OFF and install a DO-NOT-OPERATE tag.

(2) Open these circuit breakers and attach DO-NOT-CLOSE tags:

(a) Circuit Breaker Panel, P6-4:

1) 6A14 AUX POWER UNIT CONT

(b) Circuit Breaker Panel, P6-2:

1) 6B19 APU FIRE SW POWER

(3) Open the APU Cowl Door, 315A:

(a) Open the three latches.

(b) Open the APU Cowl Door, 315A.

(c) Remove the two retainer pins that attach the two hold-open rods to the APU Cowl Door, 315A.

REVISION DATE: 05/26/06

ATA AIRLINES, INC. B737-800 FLEET

W/C #: 345R4901

DATE WORK CARD COMPLETE \_\_\_/\_\_\_/\_\_\_

A/C NUMBER:

CHECK BEING PERFORMED: Cust

W/C NUMBER: 345R4901 (continued)

MECH: INSP:

- | (d) Disconnect the two hold-open rods from the  
| two spring clips.
- | (e) Connect the two hold-open rods to the two  
| brackets in the APU compartment.
- | (f) Install the two retainer pins in the two rod ends.

\_\_\_\_\_ XXXXX B. Igniter Plug Removal

WARNING: DO NOT TOUCH THE IGNITION COMPONENTS UNTIL YOU DO THESE STEPS. THESE STEPS WILL RELEASE THE HIGH VOLTAGE FROM THE IGNITION UNIT. IF YOU DO NOT OBEY THIS PROCEDURE, INJURY TO PERSONS CAN OCCUR.

(1) Do these steps to release the high voltage from the ignition unit and to remove the igniter plug [2]:

- | (a) Make sure five minutes have gone by since the  
| last APU start.

| WARNING: MAKE SURE YOU DISCONNECT ELECTRICAL  
| CONNECTOR (P13) FROM THE IGNITION UNIT TO  
| RELEASE THE HIGH VOLTAGE. INJURY TO  
| PERSONS CAN OCCUR.

- | (b) Disconnect the electrical connector (P13) [4]  
| from the ignition unit.

- | (c) Disconnect the igniter plug lead [3] from the  
| ignition unit.

- | (d) Remove the igniter plug [2].

- | (e) Disconnect the igniter plug lead [3] from the  
| igniter plug [2].

- | (f) Remove the gasket [1] from the igniter plug  
| [2].

- | 1) Discard the gasket [1].

A/C NUMBER:

CHECK BEING PERFORMED: Cust

W/C NUMBER: 345R4901 (continued)

MECH: INSP:

(g) Make sure you install all necessary protection covers.

2. Igniter Plug Installation (Figure 1).

XXXXX A. Procedure

CAUTION: REMOVE THE PROTECTION COVERS FROM THE OPENINGS AS NECESSARY. IF YOU DO NOT REMOVE THE PROTECTION COVERS, DAMAGE TO THE APU CAN OCCUR.

(1) Do these steps to install the igniter plug [2]:

(a) Install the new gasket [1] on the igniter plug [2].

(b) Lubricate the igniter plug [2] threads with a light coat of compound, Never-Seez NSBT-8N.

(c) Install the igniter plug [2] in the igniter plug boss on the combustor housing.

1) Tighten the igniter plug [2] to 225 pound-inches (25.4 newton-meters).

(d) Connect the igniter plug lead [3] to the igniter plug [2].

1) Tighten the igniter plug lead [3] to 225 pound-inches (25.4 newton-meters).

(e) Connect the igniter plug lead [3] to the ignition unit.

1) Tighten the igniter plug lead [3] to 225 pound-inches (25.4 newton-meters).

(f) Connect the electrical connector (P13) [4] to the ignition unit.

XXXXX B. Igniter Plug Installation Test

(1) Remove the DO-NOT-CLOSE tags and close these circuit

A/C NUMBER:

CHECK BEING PERFORMED: Cust

W/C NUMBER: 345R4901 (continued)

MECH: INSP:

breakers:

(a) Circuit Breaker Panel, P6-4:

1) 6A14 AUX POWER UNIT CONT

(b) Circuit Breaker Panel, P6-2:

1) 6B19 APU FIRE SW POWER

(2) Remove the DO-NOT-OPERATE tag from the APU master switch on the P5 forward overhead panel.

(3) Do the installation test for the igniter plug:

(a) Do this task: APU Starting and Operation (AMM TASK 49-11-00-860-801 p201).

(b) If it is not necessary to do other tasks, do this task: APU Usual Shutdown (AMM TASK 49-11-00-860-802 p201).

XXXXX C. Put the Airplane Back to Its Usual Condition

(1) Close the APU Cowl Door, 315A:

(a) Remove the two retainer pins from the hold-open rods in the APU compartment.

(b) Disconnect the two hold-open rods from the two brackets in the APU compartment.

(c) Put the two hold-open rods in the two spring clips.

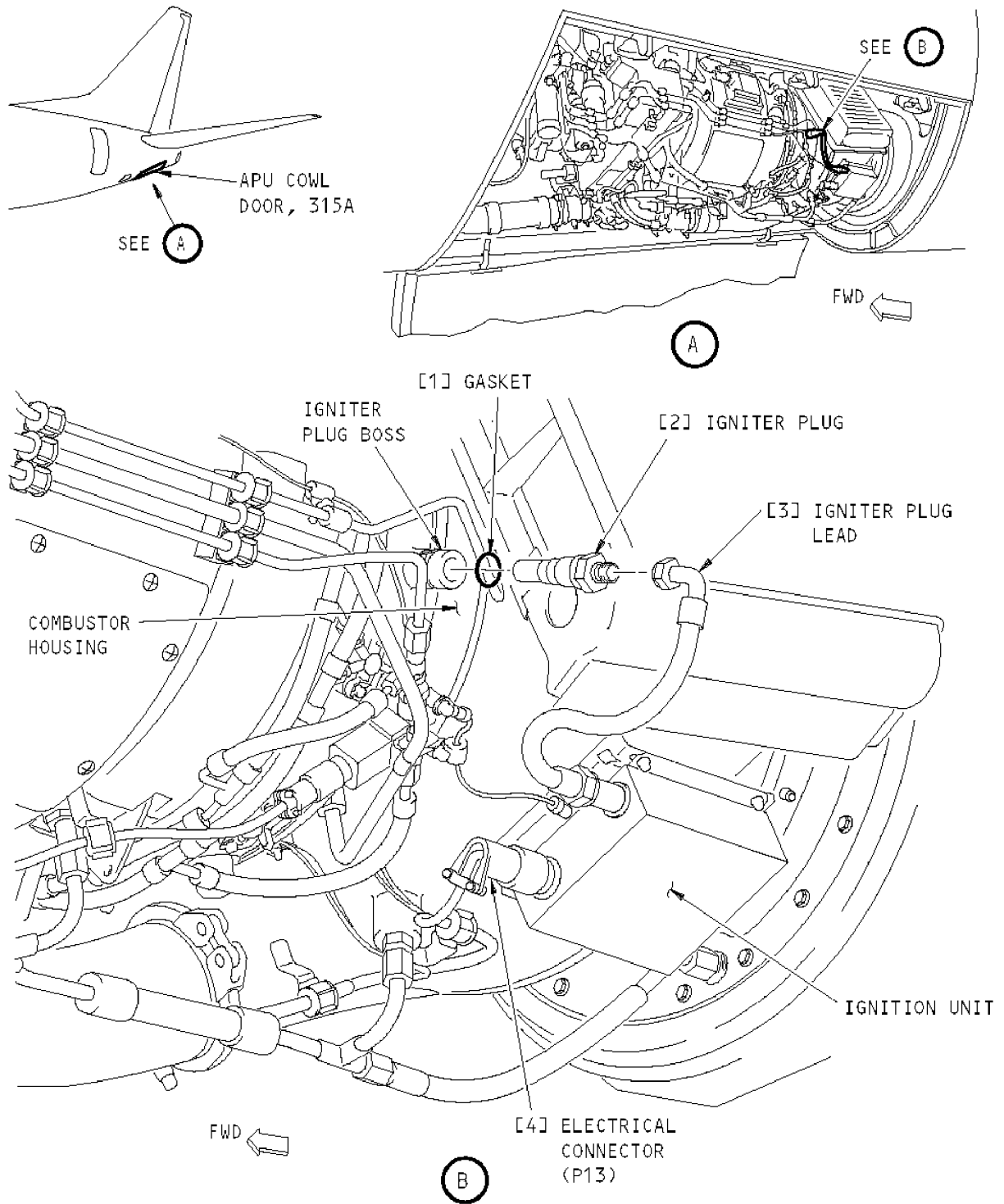
(d) Install the two retainer pins that attach the two hold-open rods to the APU Cowl Door, 315A.

(e) Close the APU Cowl Door, 315A.

(f) Close the three latches.

\*\*\*\*\*END OF WORKCARD\*\*\*\*\*

# 345R4901



APU Igniter Plug

FIGURE 1

06/01/01